

Zydacron Instructions

Table of Contents

Turning the System On.....	2
Starting the Application	2
Initiating the Call	3
Muting.....	3
Positioning the Camera	4
Ending the Call	4

ZYDACRON

Turning the System On

1. Ascend IMUX or RPM box (THEY SHOULD ALWAYS BE ON) there will be two green lights on the IMUX and three green lights on the RPM. If not contact Laura Anderson or Kathy Koren.
2. Camera (The Cannon VCC-3 camera has two power switches and when it is turned on there will be 3 small green slits visible. When first turned on the camera will move into position. On the standard camera there is only one on switch.
3. Speakers
4. Monitor
5. Computer Turn the computer on and wait for the system to come on – about 20 seconds.

As the system boots, it may prompt you to log on to the network the “Important Notice” box appears, click “OK”.

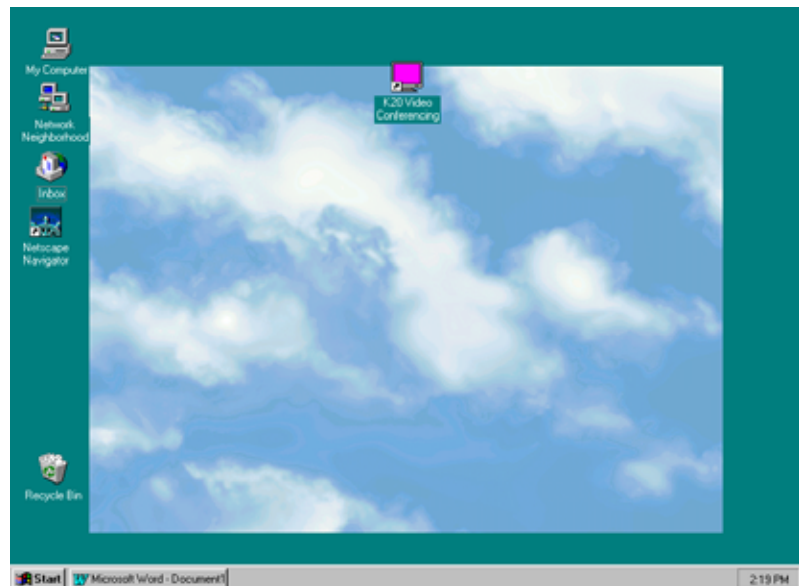
When “Enter Network Password” appears, click “CANCEL”.

Starting the Application

After the system has completed initial startup, you will see a similar desktop screen as pictured.

Double-click on the icon labeled **K-20 Profile 7** or on some systems **K20-Video Conferencing** icon.

The OnWAN software will take approximately 30-40 seconds to load, depending on how fast the computer system is.



Initiating the Call

- When participating in a K-20 multipoint videoconference, the dial-in number will be communicated to you by email from KORRS or through your district/agency K-20 scheduling support staff.
- On a multipoint videoconference call, be sure you check KORRS at www.k20.ctc.edu for last minute changes to dial-in numbers.

You can initiate calls from this window by:

1. Entering the number you wish to call on the keypad.
(i.e. 2067328122)
2. Select the Call Type. In K20 this will usually always be 384K.
3. Click on the Call button.

Wait – as your call is being connected, you will see the words “dialing” and “connecting”. If the connection attempt is successful, the video window is brought to normal size and in front of the Dial window. The number you are connected to is in the Title Bar of the video window. The status bar below the video window will read “connected”.

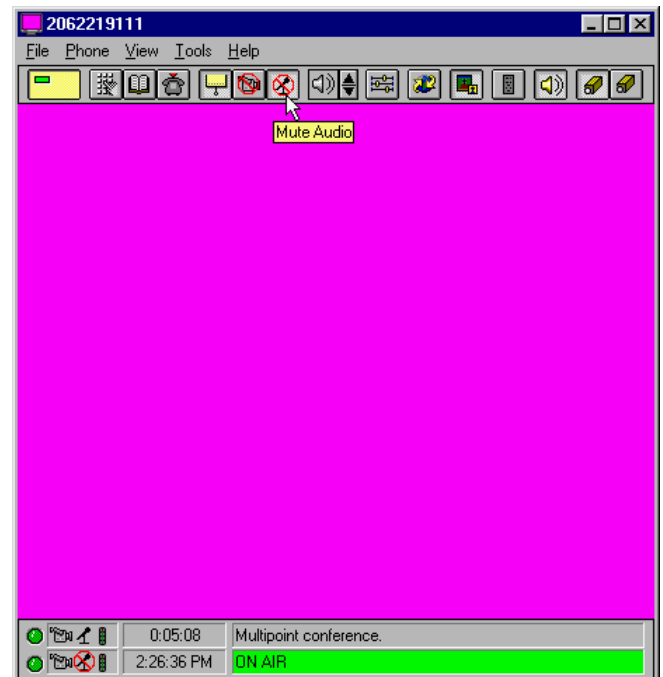


Muting

Once the call has been initiated, please mute your microphones “mics”. When selected, no audio will be sent to the far end. The Main window Local Status Bar will display the crossed out microphone and the green light will flash to alert you that audio is not being sent.

Only open (unmute) mic when you are speaking.

Please note that when you mic is muted or unmuted it will be display on the lowest tool bar. “On Air” means that others can see your site.



Positioning the Camera

The camera can be adjusted into positions using one of the two different ways.

1. By remote control or utilizing the "Tools" menu.
 - By using the remote control use the arrow keys or the zoom to position the camera.
- OR**
2. To utilize the "Tools" menu
 - Click on "Tool" menu to pull down
 - Click on "Camera Controller"
 - the camera control icon will now appear; you may use the 4 arrow keys or zoom to position the camera

After the positioning of the camera is complete, hide the controller by clicking on the minus sign on upper right hand corner of control. To retrieve the controller click on controller on the tool bar labeled "Controller" on bottom of screen.

The main video window and dial windows are displayed. The Main video window displays live video. This area allows you to see what it is you will be transmitting to the remote site. This is the best time to focus in your camera, adjust lighting, or set up your camera presets.

To display the Camera Controller remote, choose Tools from the tool bar menu then select Camera Controller.

With this virtual video camera remote control you can pan, tilt, zoom, set camera settings, focus and switch from camera to camera.

POWER button powers on the selected Camera. The image from the camera chosen in displayed on the monitor, and the camera becomes operable. When you press the **POWER** button again all camera functions are suspended.



If an image is not displayed on the screen, please check to see whether the lens cap has been removed and the monitor's power switch has been turned on.

Use the **CAMERA CONTROL** buttons to move the focus of a camera. If you press these buttons continually (except for the Home button), the function will initially work slowly, then faster.

- Press to return to the home position.
- Press to tilt the camera up.
- Press to tilt the camera down.
- Press to pan the image to the left (camera to the right).
- Press to pan the image to the right (camera to the left).

Ending the Call

When the conference is over, click on the telephone icon on the upper tool bar. You will be prompted to disconnect, select Yes and exit program.