



## Dear Early Intervention Provider,

The Infant Toddler Early Intervention Program's (ITEIP) federally required State Performance Plan (SPP) and process reflects Washington's efforts to implement the requirements and purposes of the Individuals with Disabilities Education Act (IDEA) 2004, Part C. The Federal Office of Special Education Programs (OSEP) determined the monitoring priorities and indicator data ITEIP and all the other state Part C programs must provide annually.

Monitoring priority indicators fall into two categories (compliance and performance), have different targets that are set by either OSEP or by each state. Compliance indicator targets have been set by OSEP at 100%. Performance indicator targets are set by states. Compliance target data reflects a state's success in providing timely services, in meeting the 45-day timeline, and by providing effective transition services. Performance target data reflects a state's success in achieving improved child and family outcomes or results through the provision of high quality services in natural environments.

APR compliance and performance indicator data is used by OSEP to make a formal Determination of each state's effort in meeting the requirements of IDEA. The four Determination categories include:

- Meets the requirements and purposes of the IDEA
- Needs assistance in implementing the requirements of IDEA
- Needs intervention in meeting the requirements of the IDEA
- Needs substantial intervention in implementing the requirements of IDEA

ITEIP recently received its Determination and was assigned to the "needs assistance" category. In order to move up to the "meets requirements" category, ITEIP must identify program improvement activities, resources and timelines it plans to implement in order to fully meet the requirements of IDEA.

ITEIP is committed to working with the State Interagency Coordinating Council (SICC), families, providers and other state early intervention partner agencies in meeting this new challenge.

If you would like to be actively involved in the process, please consider joining one of the SICC working committees. Information about SICC committees can be obtained by contacting Linda Jennings at (360) 725-3514. For general information about the SPP/ APR or the new Determination process, please visit the ITEIP website at <http://www1.dshs.wa.gov/iteip/DataSysAndTrain.html> or contact your Program Liaison.

Sandy Loerch Morris,  
Program Director

## Child Outcomes and the Child Outcomes Summary Form (COSF) Process

This past spring ITEIP provided training sessions across the state for teams to learn about the implementation of Child Outcomes and Child Outcomes Summary Form Process. Beginning July 1, 2007, an entry child outcome summary needs to be completed for each child entering ITEIP. Exit summaries must be completed for all children leaving ITEIP who have entry summaries AND who have been in early intervention services for six months or more as soon as this occurs after July 1, 2007.

Local Lead Agencies and Early Intervention Service Providers will use the Early Childhood Outcomes Center Child Outcome Summary Form to gather information on all eligible children entering and exiting the early intervention program. The outcomes that are measured are:

- Children have positive social-emotional skills (including social relationships)
- Children acquire and use knowledge and skills (including early language/ communication and early literacy)
- Children use appropriate behaviors to meet their needs.

*continued on page 2*

## In This Issue

- |  |             |
|--|-------------|
| • Family Resources Coordinator Training        | Page 2      |
| • Trainings                                    | Pages 3 & 4 |
| • FRC Report Form                              | Insert      |
| • Decision Tree for Summary Rating Discussions | Page 5      |
| • Measurement Project & Data Collection        | Page 6      |
| • Personal Safety When Making Home Visits      | Page 6      |
| • FRC Training Registration Form               | Page 7      |

The Starting Line Online  
[www.esd112.org/sss/](http://www.esd112.org/sss/) or [www.esd112.org/pressroom/](http://www.esd112.org/pressroom/) (newsletter only)



**Child Outcomes and the Child Outcomes Summary Form (COSF) Process**

continued from front page

Below is a sampling of a few common questions that are being asked:

**When do I complete the COSF?**

A COSF is completed for each child at least upon entry into ITEIP, and when transitioning out of early intervention.

**How do I integrate the COSF process into the IFSP meeting?**

Based on input from pilot sites, teams felt it was easier to complete the COSF process at the beginning of IFSP meetings rather than the end.

**What if the child only exhibits delays in one outcome area?**

Functional skills in out outcome area may impact other outcome areas. It is important to document skills in at least the three areas.

**Who is the team that completes the COSF?**

The team consists of parents/family members, and professionals involved in evaluations, assessments, and providing services to the child/family. The Family Resources Coordinator assigned to the family/child at the time of entry and at the time of exit should facilitate the team meeting and process.

To access the full Frequently Asked Questions section on the ITEIP webpage, go to <http://www1.dshs.wa.gov/word/adsa/iteip/Child%20Outcomes-COSF%20Process%20-%20F.A.Q.doc>

Additional resources can be found on the ITEIP webpage in addition to the full documents provided at the statewide trainings. This newsletter contains the document Washington State Parameters for Child and Family Outcomes Measurement Project and Data Collection and the Decision Tree (pg 6).

# Family Resources Coordinator Training

## BASIC FRC TRAINING

This training is to serve as the initial orientation and training for FRCs required for initial state registration. Participants will gain knowledge and understanding of the early intervention program requirements of FRCs and skills in facilitating the development of an IFSP.

### Fall 2007

Day one of this training will be an online training; to be completed before attending Day 2 and Day 3. You will receive further information upon receipt of individual registration.

**DAY 2 - Nov. 7 - 8:30 a.m. - 3:30 p.m.**

"The Role of FRCs and IFSPs"

**DAY 3 - Nov. 8 - 8:30 a.m. - 3:30 p.m.**

"Developing IFSPs"

Fee: \$35 - Clock Hours available  
Register by Oct. 12, 2007

## YEAR 2 FRC TRAINING

Year 2 Training is for FRCs who completed Basic Training between October 1, 2006, and September 30, 2007, and who are registered as an FRC. FRCs in this category **MUST complete the Year 2 Training** in order to maintain state registration.

In addition, **Year 2 FRCs must** also complete an additional **six** contact hours of continuing education training. A form is included for reporting hours.

### Leadership and the Family Resources Coordinator: Exploring the Role (required for year 2 FRCs)

The Family Resources Coordinator plays a critical leadership role in the appropriate delivery of services to children under Part C of the IDEA. From coordinating services for specific children and families to facilitating communication and collaboration with service providers, the FRC has many opportunities to influence the effective delivery of these programs. This seminar will explore three essential elements of this role: Communication, Collaboration and Conflict Management, and the skills essential to each. Greg Abell, Sound Options Group, L.L.C.

**Sept. 11, 2007 • 9:00 a.m. - 3:30 p.m.**  
Register by August 31, 2007

**Feb. 14, 2007 • 9:00 a.m. - 3:30 p.m.**

Fee \$20 - Clock Hours available. Training will take place at nine ESDs across the state.

via - **K20 VIDEO CONFERENCING**

Trainings are open to others based on space available at each ESD.

## FRCs YEAR 3 AND BEYOND

FRCs who have completed both the Basic FRC and Year 2 Training, and have provided FRC services for at least two years, are required to submit 12 contact hours per year to maintain their state registration. Included in this newsletter is an extensive list of training opportunities throughout the state that will meet the requirements for Year 3 and Beyond continuing education and training. In addition, the FRC report form is included for reporting hours.

NOTE: If you have taken FRC training, but are not registered with ITEIP, please call Connie Salzman, ESD 112, 360-750-7500.

## Reminder FRCs



To remain a current registered FRC please submit your contact hours on the included form by September 30, 2007. If you have FRC status questions, please email Connie Salzman, [connie.salzman@esd112.org](mailto:connie.salzman@esd112.org) or call 800-562-1711.

**MAP OF ESDS AND FRC TRAINING REGISTRATION FORM ARE ON PAGE 7.**

# Trainings



## **12<sup>TH</sup> BIENNIAL NCAST-AVENUW INSTITUTE WITH THE CENTER ON INFANT MENTAL HEALTH RISKY BEGINNINGS: EXAMINING CASE STORIES ABOUT EFFECTIVE INTERVENTION WITH YOUNG CHILDREN & FAMILIES**

**July 20-21, 2007, 8:30 am – 5:00 pm**

The theme of this Institute is intervention with young children and families and what we can learn by examining their stories. The Institute will focus on our youngest and most vulnerable population and will bring nationally renowned experts, Dr. Charles Zeanah and Dr Pat Crittenden, to Seattle where they will share their work with young children and families. The effects of violence, abuse & neglect, persistent stress & fear, severe maternal depression among other factors, on early social emotional development can result in mental health disorders. Intervention for the baby and mother (or significant adult in baby's life) can prevent or ameliorate the effects of early childhood trauma.

Location: Hyatt Regency, Bellevue, WA  
Fee: \$340

Registration: Mail form with payment to NCAST-AVENUW, University of WA Box 357920, Seattle, WA 98195



## **UNDERSTANDING YOUR RIGHTS IN EDUCATION & IEP CLINICS BY APPOINTMENT**

**July 20, 2007**

Do you have questions, or concerns about your child's program, or about the new changes in laws and education? PAVE's Parent Training and Information Staff are coming into your communities to do free personal consultations about IEPs, 504 laws, evaluations and support for YOU and your CHILD! Dates and times are subject to change, so please, contact your local PAVE office or call 1-800-5PARENT to schedule an appointment or workshop in your area.

Location: 1010 N Central Parkway, Kennewick, WA

Fee: Free

Contact: Sherry Mashburn, 1-877-821-4113, or email [sherrymash11@hotmail.com](mailto:sherrymash11@hotmail.com)

## **UNDERSTANDING YOUR RIGHTS IN EDUCATION & IEP CLINICS BY APPOINTMENT**

**July 24, 2007**

Location: Mattawa WSMC Child Dev. Center, 19295 S 4<sup>th</sup> St., Mattawa, WA  
Contact: Andrea Sheehan, 509-972-4659 or email [cwpave@nwinfo.net](mailto:cwpave@nwinfo.net)

Web Site: [www.washingtonpave.org](http://www.washingtonpave.org)

## **EARLY LEARNING SUMMER INSTITUTE: 2007 FOCUS: BEST PRACTICES IN THE KINDERGARTEN CLASSROOM**

**August 2-3, 2007, 8:30 am – 3:15 pm**

The Early Learning Summer Institute was created to help you increase your skills in the field of early learning; as part of the ESD 189's School Readiness Initiative, this summer's institute will focus on Best Practices in Kindergarten Classroom. Nellie Edge is a kindergarten teacher-researcher, literacy coach, storyteller and musician. Her playful and inspiring seminars will send you back to your classroom with renewed energy, enthusiasm, and vision based on research and teaching wisdom.

Location: NW ESD 189, 1601 R Avenue,

Anacortes, WA 98221

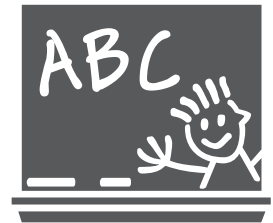
Fee: Both Days \$295,

August 2, Parents as Partners \$175

August 3, The Magic of Signing Songs \$175

Registration: 360-299-4070, Lark Kesterke

Clock Hours: 6 hours available each day \$17 a day



## **1,2,3 – A, B, C: MAKING THE MATH-LITERATURE CONNECTION IN KINDERGARTEN (ANNUAL KINDERGARTEN INSTITUTE)**

**August 6, 11:00 am – 5:00 pm, August 7-8, 2007 8:30 am – 4:15 pm**

Location: ESD 113, 601 McPhee Road, Olympia, WA

Instructors: Bill Blair and Cheryl Vance  
Fee: \$285

Registration: [www.myesd.org](http://www.myesd.org) follow the my.esd link or Dianna Avery, [davery@esd113.k12.wa.us](mailto:davery@esd113.k12.wa.us)

Clock Hours: 20 hours, \$45, 2 SPU credits, \$80

## **WHAT WILL THEY DO ALL DAY: BEGINNING YOUR FULL DAY KINDERGARTEN**

**August 16-17, 2007, 8:30 am – 4:00 pm**

Location: ESD 113, 601 McPhee Road, Olympia, WA

Instructors: Bill Blair and Cheryl Vance  
Fee: \$260

Registration: [www.myesd.org](http://www.myesd.org) follow the my.esd link or contact Dianna Avery, [davery@esd113.k12.wa.us](mailto:davery@esd113.k12.wa.us)

Clock Hours: 14 hours \$33, 1 SPU credit, \$40

(continued on page 4)

## *Trainings continued*

### **KINDERGARTEN INSTITUTE**

**August 12, 2007, 8:30 am - 4:30 pm**

**August 13, 2007, 8:30 am - 3:30 pm**

Location: Evergreen Public Schools, Administrative Service Center, Tan Complex, Evergreen Room, 13501 NE 28<sup>th</sup> Street, Vancouver, WA 98668

A full day! Finally the time to do what we need to do and to do what children need! In this two-day institute we will assist you in creating a kindergarten classroom where children are successful learners and you are a successful teacher!

Instructors: Bill Blair and Cheryl Vance  
Registration: Myrna Snead, ESD 112, 360-750-7500, ext. 268

Fee: \$225 (includes lunches and materials)  
Clock hours available

### **EMPOWERING LEADERSHIP, OLYMPIC ESD'S SUMMER LEADERSHIP CONFERENCE**

**August 14 – 15, 2007**

Location: Olympic ESD, 105 National Ave., Bremerton, WA

Fee: \$205

Registration: [www.oesd.wednet.edu](http://www.oesd.wednet.edu)

Clock Hours: 12.5 hours available

### **SOUND OPTIONS TRAINING OPPORTUNITIES**

**August 20, Approaching Difficult Conversations**

**August 21, Leading Participative Meetings**

**8:30 am – 4:00 pm**

Location: WA State School for the Deaf, Vancouver, WA

Fee: Free

Contact: ESD 112, 360-750-7500, ext. 316

Clock hours available

### **IT'S ALL ABOUT YOU! WAYS TO REDUCE MISBEHAVIOR AND INCREASE LEARNING – PARAEDUCATOR CONFERENCE**

**August 21, 2007, 8:30 am 3:30 pm**

Location: ESD 113, 601 McPhee Road, Olympia, WA

Instructors: Bill Blair and Cheryl Vance

Fee: \$45

Registration: [www.myesd.org](http://www.myesd.org) follow the my.esd link or contact Dianna Avery, [davery@esd113.k12.wa.us](mailto:davery@esd113.k12.wa.us)

Clock Hours: 6 Hours

### **WENATCHEE WASHINGTON AUTISM CONFERENCE**

**August 22-23, 2007**

Professionals RinaMarie Leon Guerrero PhD, BCBA, Gusty-Lee Boulware, PhD, BCBA, Cherie Duval-White BS, OTR/L, and Shanna Alvarez-Francois, M.S. CCC-SLP from the University of WA come to present various topics surrounding education for young children with Autism.

Location: Wenatchee Valley College, 1300 Fifth Street, Wenatchee, WA

Fees; \$100 per day for Professionals and \$25 per day for parents if received by August 3. \$125 per day for Professionals and \$30 per day for parents after August 3.

Registration: Call 509-888-2377 or email [tcardwell@co.douglas.wa.gov](mailto:tcardwell@co.douglas.wa.gov)

Clock Hours: Available

### **NECTAC NATIONAL TA MEETING MEASURING CHILD & FAMILY OUTCOMES**

**Beginning: August 26 1:30 pm**

**Ending: August 28, 12:00 pm**

This TA meeting will provide opportunities for participants to learn about other states' strategies for measuring child and family outcomes, hear the latest guidance from the Early Childhood Outcomes Center and the Office of Special Programs, and discuss common challenges and effective practices.

### **OSEP PART C COORDINATORS MEETING**

**Beginning: August 28, 1:30 pm**

**Ending: August 30, 12:00 pm**

Representatives from the Office of Special Education Programs will provide information and technical assistance regarding Part C general supervision and fiscal mentoring, as well as the Part C, SPP/APR indicators. They will also convene individual meetings between OSEP State Contacts and Part C Coordinators.

Fee: \$50

Location: Renaissance Baltimore Harborplace Hotel, 202 East Pratt Street, Baltimore, MD 21202, Phone 1-410-547-1200

Contact: Logistics - Call Michael Spencer at the NECTAC Office 919-962-7300 or email [spencer@mail.fpg.unc.edu](mailto:spencer@mail.fpg.unc.edu)

Agenda – Lynne Kahn, 919-962-2781 or email [lynne\\_kahn@unc.edu](mailto:lynne_kahn@unc.edu)

For more information visit the nectac website [www.nectac.org](http://www.nectac.org)

### **EARLY LEARNING MENTORING INSTITUTE, "THE KEY TO ENHANCING QUALITY"**

**September 15, 2007, 9:00 am – 3:30 pm**

Keynote, "The Power of Mentoring"

Cecelia Alvarado, Early Childhood Education Consultant

Location: McIntyre Hall Performing Arts & Conference Center, 2501 E College Way, Mount Vernon, WA

Fee: \$85 before 9/10/07, \$100 after 9/10/07 includes lunch

Registration: [www.esd189.org](http://www.esd189.org)

### **WAEYC'S ANNUAL CONFERENCE, LOOKING THROUGH THE KALEIDOSCOPE CONFERENCE**

**October 25-27, 2007**

Location: Yakima

Each fall the Annual Conference offers nationally known keynoters, over 100 sessions, in-depth seminars, coordinated tracks, exhibits curriculum and resource displays, program tours and networking opportunities. Audiences who work with and on behalf of young children and their families encouraged to attend. Keynote Speakers, Jone M. Bosworth, Dept. of Early Learning, Ella Jenkins, Adventures in Rhythm

Fee: Yes

Registration Information: 253-854-2565, ext. 23, [kaleidoscope@waeyc.org](mailto:kaleidoscope@waeyc.org), [michelle@waeyc.org](mailto:michelle@waeyc.org), [www.waeyc.org](http://www.waeyc.org).

## **Needed Workshops In Your Region?**

If you have workshops or trainings you would like to include in The Starting Line Newsletter please email title, short description, date, time, location, fee, and contact information to Connie Salzman, at [www.esd112.org](http://www.esd112.org).



# The Infant Toddler Early Intervention Training Program

Educational Service District 112

## FRC Training: REPORT FORM

**1**

Name \_\_\_\_\_ Phone \_\_\_\_\_  
Agency \_\_\_\_\_ Fax \_\_\_\_\_  
Agency Address \_\_\_\_\_ E-mail \_\_\_\_\_  
City \_\_\_\_\_ WA ZIP \_\_\_\_\_  
County \_\_\_\_\_

**ATTENTION!! FRC Training Program Staff**  
The above information is *NEW* or has *CHANGED!*

**2**

I request \_\_\_\_\_ contact hours (6)\* for **Year 2** from:

I request \_\_\_\_\_ contact hours (12)\* for **Year 3** from:

- Workshop(s) (please check only one box)  
 Conference(s)  
 Training Session(s)  
 Formal Coursework  
 Technical Assistance/  
Consultation/Mentorship

\*See #2 on reverse side of this form

Title: \_\_\_\_\_

Date(s): \_\_\_\_\_

Location: \_\_\_\_\_

[Contact hours for TA/C/M are limited per year. TA from the Infant Toddler Early Intervention Program does not qualify for FRC "Year 3" contact hours.]

**3**

These contact hours relate to early intervention and my work as an FRC because:

---

---

---

---

---

---

---

---

---

---

**4**

I participated in (please check only one box):

Training sponsored by:

- Lead Agency for EIS/CICC  
 Infant Toddler Early Intervention Program (ITEIP)  
 A State Agency: \_\_\_\_\_  
 Other: \_\_\_\_\_

**6**

**Signatures** (to be obtained prior to sending a Completed Report Form to the FRC Training Program Staff):

**5**

A copy of this form, or other confirmation of training was sent to the Lead Agency for Early Intervention Services in the FRC's county/geographical area.

Family Resources Coordinator (FRC) \_\_\_\_\_ Date \_\_\_\_\_ Local Lead Agency \_\_\_\_\_ Date \_\_\_\_\_

FRC Training Program, ESD 112, 2500 NE 65<sup>th</sup> Ave, Vancouver, WA 98661-6812 (360) 750-7500 ext. 236 Fax: (360) 906-1010

---

# REPORT FORM INSTRUCTIONS

---

This Report Form is intended for use by **Registered FRCs** in Washington State to report contact hours for Year 2 and Year 3.

*Please use the following information and instructions to assist you in completing the Report Form:*

- 1 Demographics** – Please be sure to include *your name und complete information*. The FRC Training Program Staff appreciates all information available: Agency, Agency Address, Phone, Fax and E-mail. Additionally, *if something is new or has changed* – please be sure to check the box provided.
  
- 2 Contact Hours** – The number of contact hours are simply that – *the number of hours you were actually “in contact” with training*. Year 2 FRCs are required to attend one of two trainings offered, plus **6** contact hours during their Year 2. Year 3 FRCs are required to have a total of **12** contact hours. For example, *a 3-hour workshop would be 3 contact hours*, or a one-day training would be the amount of time actually spent in training (*8:30 - 4:00 with a 1-hour lunch & two 15-minute breaks equals 6 contact hours*). **NOTE: The FRC Training Program Staff will not calculate.**  
  
**Type of Training Attended** – Please check *only one type of training attended* (e.g., Workshop, Training Session, Formal Coursework, or Technical Assistance/Consultation/Mentorship, Year 2 Training). Note that, as indicated on the Report Form, contact hours for technical assistance, consultation, and mentorship are limited to 6 hours per year, and technical assistance from the Infant Toddler Early Intervention Program does not qualify for “Year 3 & Beyond” contact hours.  
  
**Specific Training Attended** – The *title* of the training, the *date(s)*, (*the date is critical to determine the fiscal year; [i.e., Sept 30, 2006-October 1, 2007], the hours are to be credited*) and *location* should also be provided. If there is insufficient space on the form – feel free to attach a description or additional information.
  
- 3 Relevance** – FRC training is to relate to early intervention and to the role of FRCs. Please indicate how the training in which you participated relates.
  
- 4 Sponsor/Conference** – Please *check only one box* in this section to indicate who sponsored the training or what conference you attended.
  
- 5 Signatures** – We ask that you *obtain the following signatures before submitting* the Report Form to the FRC Training Program: *(1) FRC* (your own, in order to confirm that all information provided by you is correct) and *(2) Local Lead Agency* (to assure that the appropriate individual at your local lead agency is informed and involved in communication regarding training).
  
- 6 COPY to the Lead Agency for Early Intervention Services** – Send a copy of this form or other confirmation of training to the Lead Agency for Early Intervention Services in your FRC county/geographic area.



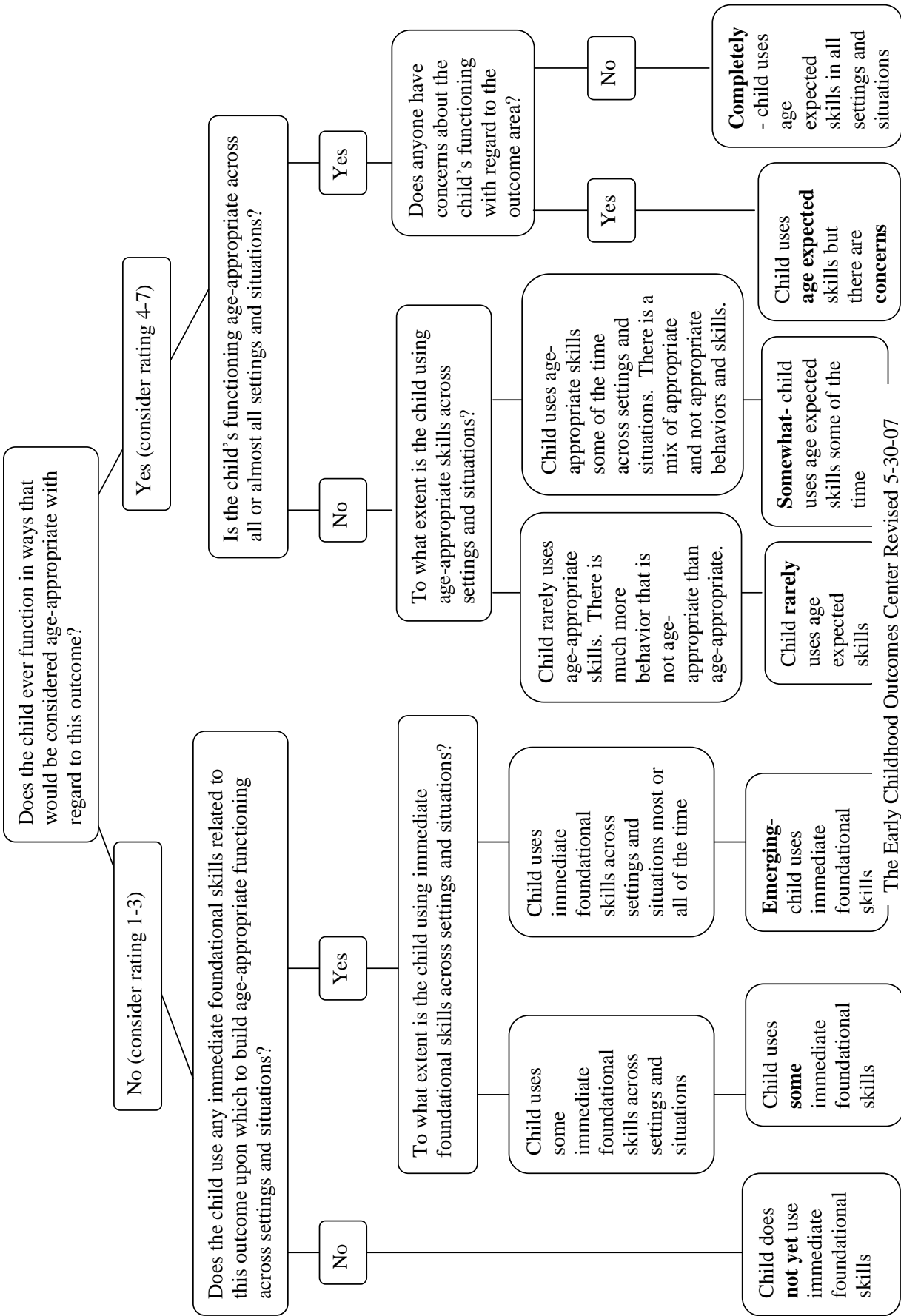
---

*Send Original Completed Report Forms to:*

**FRC Training Program, ESD 112, 2500 NE 65<sup>th</sup> Ave, Vancouver, WA 98661-6812**  
**Questions? Telephone: (360) 750-7500 ext. 236 or (800) 562-1711 Fax: (360) 906-1010**

---

# Decision Tree for Summary Rating Discussions



# Washington State Parameters for Child and Family Outcomes Measurement Project and Data Collection\*

- Collection and reporting State Performance Plan data, including child and family outcomes is a federal requirement and not an option.
- Reports must be aggregated data for state and local geographic areas and are to be reported to the U.S. Department of Education, Office of Special Education Programs, the Governor, and the public.
- Individualized Family Service Plan (IFSP) teams will complete and collect data for child outcomes. The National Early Childhood Outcomes Center Summary Form and process has been modified for Washington and will be used statewide. ITEIP worked with a stakeholder advisory group and the State Interagency Coordinating Council to determine that this was the best approach. Five sites piloted process and forms and their input has been incorporated into Washington's implementation training.
- Parents and families will be involved in child and family outcome measurement and skill summary discussions and collection. The ECO Center narrative terms will be used to define skills and progress for each child at entry into and exit

from the Washington ITEIP and services.

- Beginning July 1, 2007, an entry child outcome summary needs to be completed for each child entering ITEIP. Exit summaries must be completed for all children leaving ITEIP who have entry summaries AND who have



been in early intervention services for six months or more as soon as this occurs after July 1, 2007.

- Measurement will occur for all children/families served for at least six months. This process requires an IFSP team as determined by the child's needs. The team will discuss and work together for consensus on summaries of child's skills and progress made. Teams must include the professional licensed or credentialed to evaluate, assess, and explain results, the parent(s), and the FRC assigned

to the family/child at time of entry and time of exit.

- More than one evaluation and assessment tool is allowed for use at entry and exit times when measuring and collecting child outcomes data. Functional outcomes measured will be incorporated.
- The Infant Toddler Early Intervention Program (ITEIP) Data Management System will be updated to collect, record, and generate aggregate reports for child outcome data. Until the system is reprogrammed and ready, electronic or paper summary forms will be required.
- Teams may choose to do outcome summary's forms more often than at entry and exit. If so, they need to clearly document them as NOT the entry or exit form.
- Family outcomes will be measured by use of the National Early Childhood Outcome Center (ECO). This survey tool will be used consistently statewide. ITEIP will ask local lead agencies for assistance with distribution by this fall. The Data Management System will be updated to include the ECO Survey, so it can be shared with families at the time of annual IFSP meeting and at the time of transition at age three.

REVISED MAY 9, 2007

SOURCE: [WWW1.DSHS.WA.GOV/ITEIP/CHILDFAMILYOUTCOMES.HTM](http://WWW1.DSHS.WA.GOV/ITEIP/CHILDFAMILYOUTCOMES.HTM).

# WAEYC 31st Annual Conference

## *Looking Through the Kaleidoscope*

**OCTOBER 25 - 27, 2007  
YAKIMA, WASHINGTON**

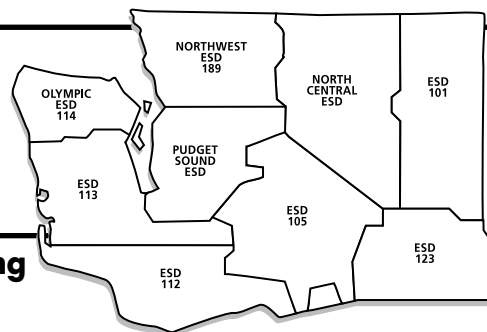
**Keynote Speakers Include:**

*Jone M. Bosworth*

- Department of Early Learning

*Ella Jenkins*

- Adventures in Rhythm



### Family Resources Coordinator Training Registration Form

Name \_\_\_\_\_

Organization \_\_\_\_\_ Position \_\_\_\_\_

Address \_\_\_\_\_ City \_\_\_\_\_ State \_\_\_\_\_ Zip \_\_\_\_\_

Work Phone \_\_\_\_\_ Fax \_\_\_\_\_ Home Phone \_\_\_\_\_

E-mail \_\_\_\_\_ County \_\_\_\_\_

Session/Date attending \_\_\_\_\_ ESD attending \_\_\_\_\_ Fee \$ \_\_\_\_\_

**Make check/PO payable to ESD 112** Payment Method: Check \_\_\_\_\_ PO \_\_\_\_\_

Please mail or Fax registration form to  
Educational Service District 112 • Connie Salzman  
2500 NE 65th Ave • Vancouver, WA 98661-6812  
1-800-562-1711 • FAX: (360) 906-1010  
(360) 750-7500 ext. 236  
Account Code # 1605-12-0000-8420-0000-0000

ESD 112 complies with all state and federal rules and regulations and does not unlawfully discriminate on the basis of race, color, creed, religion, national origin, age, sex, marital status, or the presence of any sensory, mental, or physical disability. This holds true for all district employment and opportunities, and service delivery systems. Inquiries regarding compliance and/or grievance procedures may be directed to Human Resources Director (360) 750-7503. Any questions regarding access to written materials, facilities, or programs should be directed to Carol Hall, (360) 750-7500

WE WILL NEED THE FOLLOWING SPECIAL ACCOMMODATIONS (WHEELCHAIR ACCESS, INTERPRETER, \_\_\_\_\_)

Please note: Requests for special accommodations must be received by ESD 112 seven days in advance of the first class session. Questions regarding access to written materials, facilities or programs should be directed to the American Disabilities Coordinator at (360) 750-7503

## Educational Service District Contacts

Carol Hall - Lead ESD  
Educational Service District 112  
(360) 750-7500  
carol.hall@esd112.org

Kim Lyman  
Educational Service District 101  
(509) 789-3604  
klyman@esd101.net

Faye Fuchs  
Educational Service District 105  
(509) 454-3110  
fayeff@esd105.wednet.edu

Mary Perkins  
Educational Service District 113  
(360) 464-6716  
mperkins@esd113.k12.wa.us

Larry Bush  
Educational Service District 123  
(509) 547-5472  
lbush@esd123.org

Barb Orr  
North Central ESD  
(509) 665-2653  
barbo@ncesd.org

Margy Miller  
Northwest ESD  
(360) 299-4012  
mmiller@esd189.org

Carol Pacheco  
Olympic ESD  
(360) 478-6886  
cpacheco@oesd.wednet.edu

Val Lynch  
Puget Sound ESD  
(206) 439-6936  
vlynch@psed.org

### ITEIP Program Liaisons

Karen Walker,  
Assistant Director  
(350) 725-3503  
walkekj@dshs.wa.gov

Walt Bowen  
(360) 725-3512  
bowenwb@dshs.wa.gov

Kathy Blodgett  
(360) 725-3520  
blodgka@dshs.wa.gov

## *The Starting Line*

Early Intervention Training News is available free of charge and is published by The Infant Toddler Early Intervention Training Program, Educational Service District 112

2500 NE 65 Avenue

Vancouver, WA 98661-6812

Editor Carol Hall, ESD 112

Phone (360) 750-7500, Ext. 275

FAX (360) 906-1010

Made possible through funding from  
The Infant Toddler Early Intervention Program  
Division of Developmental Disabilities  
Washington State Department of Social &  
Health Services

*The Starting Line* is now available online in PDF! Go online to get your next copy. The PDF version looks exactly like the hard copy and can be printed directly to your printer. If you'd rather receive *The Starting Line* electronically - please let us know by sending an email message to: connie.salzman@esd112.org. We'll send you an email notice of when the latest copy is available online. Thanks - this saves both printing and mailing costs.

## *The Starting Line* EARLY INTERVENTION TRAINING NEWS

The Infant Toddler Early Intervention Training Program



EDUCATIONAL  
SERVICE  
DISTRICT 112

2500 NE 65 Avenue  
Vancouver, WA 98661-6812