

AGENCY SNAPSHOT

EDUCATIONAL SERVICE DISTRICT 112



*Serving children, schools and
communities for over 50 years.*



For more than 50 years, schools and communities have counted on Educational Service District 112 for essential services. Working collectively with our school and community partners, we bring equity and opportunity to students of Southwest Washington and beyond.



Hough Early Learning Center
October, 2020

MISSION

Who are we, and what is our purpose? The answers to those questions are defined in our key focus areas:

- We deliver programs that produce successful outcomes for students and teachers.
- We help save districts money so more time and resources can be directed to the classroom.
- We help build healthy communities that improve quality of life and contribute to the vitality of individuals and families.
- We serve the most vulnerable students who need extra supports to help them thrive.

We serve over 97,000 K-12 students in 30 public school districts, 23 state-approved private schools and two state schools. We also provide direct services to more than 4,000 children.

WHO WE SERVE

The following is a list of the public school districts and state schools in our region:

BATTLE GROUND 360.885.5300	KALAMA 360.673.5282	OCEAN BEACH 360.642.3739	WASHOUGAL 360.954.3000
CAMAS 360.335.3000	KELSO 360.501.1900	RIDGEFIELD 360.619.1300	WHITE SALMON VALLEY 509.493.1500
CASTLE ROCK 360.501.2940	KLICKITAT 509.369.4145	ROOSEVELT 509.384.5462	WISHRAM 509.748.2551
CENTERVILLE 509.773.4893	LA CENTER 360.263.2131	SKAMANIA 509.427.8239	WOODLAND 360.841.2700
EVERGREEN 360.604.4000	LONGVIEW 360.575.7000	STEVENSON-CARSON 509.427.5674	WA STATE SCHOOL FOR THE BLIND 360.696.6321
GLENWOOD 509.364.3438	LYLE 509.365.2191	TOUTLE LAKE 360.274.6182	WA CENTER FOR CHILDHOOD DEAFNESS AND HARD OF HEARING YOUTH 360.696.6525
GREEN MOUNTAIN 360.225.7366	MILL A 509.538.2522	TROUT LAKE 509.395.2571	
HOCKINSON 360.448.6400	MT. PLEASANT 360.385.3371	VANCOUVER 360.313.1000	
	NASALLE-GRAYS RIVER VALLEY 360.484.7121	WAHKIAKUM 360.795.3971	

We also serve in other corners of the state through the ESD Network. Special education services, school construction management, communications and technology training are a few examples of supports we provide across the state.

We add value to education through our 300+ programs and services. We've dedicated our legacy to creating innovative, quality programs that respond to unique requests from large and small school districts.

Our focus assures support on two fronts:

1. Teaching and learning support to help strengthen instruction and improve student achievement
2. Business and administrative expertise to help support district management and operations functions



BOARD OF DIRECTORS

ESD 112 is governed by a seven-member board. Elected by local school board members throughout the six-county service region, these volunteers are strong education advocates in our communities.



DISTRICT 1: DR. RICHARD GRAHAM

Represents Kelso, Kalama, Woodland, Green Mountain, La Center and Battle Ground School Districts



DISTRICT 2: MARK HOTTOWE

Represents Ocean Beach, Naselle-Grays River Valley, Wahkiakum, Longview, Castle Rock, Toutle Lake and Kelso School Districts



DISTRICT 3: STEVE WRIGHTSON

Represents Hockinson, Battle Ground and Evergreen School Districts



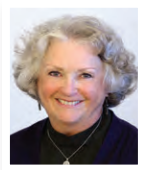
DISTRICT 4: LEANNE BREMER

Represents Battle Ground, Ridgefield and Vancouver School Districts



DISTRICT 5: MARILYN KOENNINGER

Represents Vancouver School District



DISTRICT 6: DARLENE STICKEL

Represents Evergreen School District



DISTRICT 7: KEVIN DAVIS

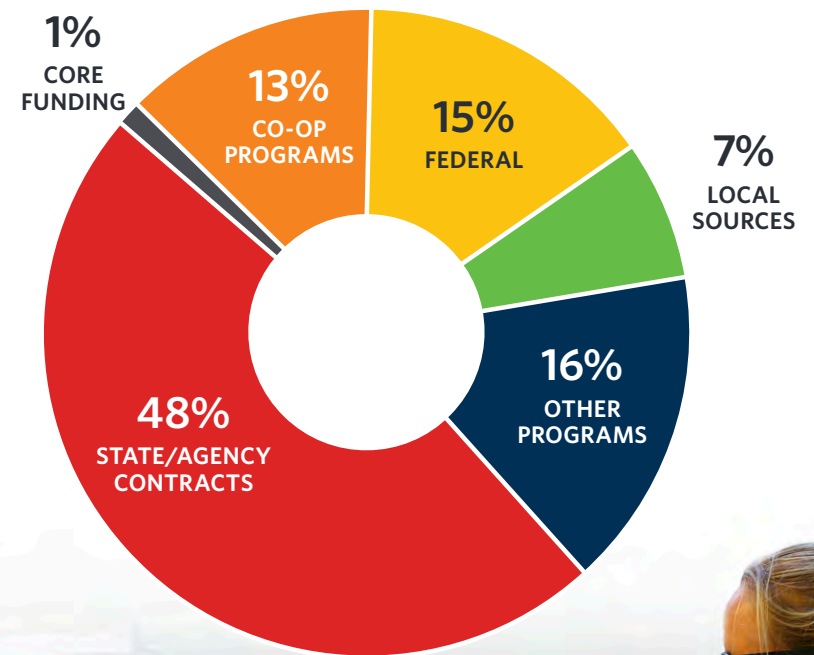
Represents Camas, Centerville, Evergreen, Glenwood, Klickitat, Lyle, Mill A, Mount Pleasant, Roosevelt, Skamania, Stevenson-Carson, Trout Lake, Washougal, White Salmon Valley, and Wishram School Districts

FINANCIAL RESOURCES

While ESD 112 is an essential part of state and regional education services, annual state funding for basic operational expenses is minimal. **Of ESD 112's \$88 million budget, only 1% is directly appropriated by the state.** The ESD uses that seed money to secure collaborative grants, manage fee-for-service partnerships and operate resourceful cooperatives and trusts. In fact, **for every \$1 invested in core funding, the ESD provides nearly \$80 in services!** That's a remarkable return on the state's investment.

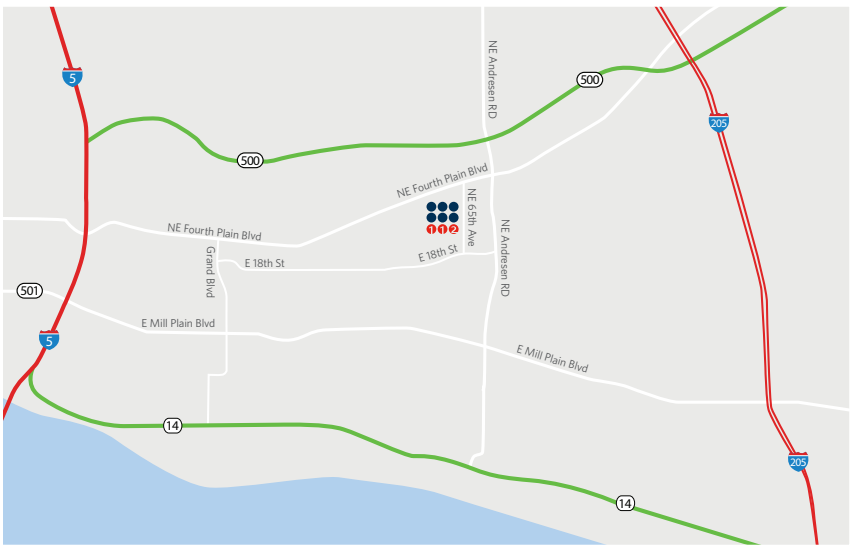
ESD 112 Budget by Source

for fiscal year ending August 31, 2021



Math Anywhere Pop-Up Play
August, 2021

Our bus drivers traveled nearly 900,000 miles in 2021, transporting students as far outside our region as Centralia, Astoria, White Salmon, and south of Portland. Many of those students (approx. 500 per month) are experiencing homelessness or are in foster care, attend ESD's Early Childhood Education Assistance Programs or Behavioral Programs, or attend the State schools for the Blind and Deaf.



HOW TO FIND US

Educational Service District 112
2500 NE 65th Avenue, Vancouver, WA 98661-6812

www.esd112.org

P 360 750 7500 **TDD** 360 750 7510



EDUCATIONAL SERVICE DISTRICT 112

Updated: February, 2022