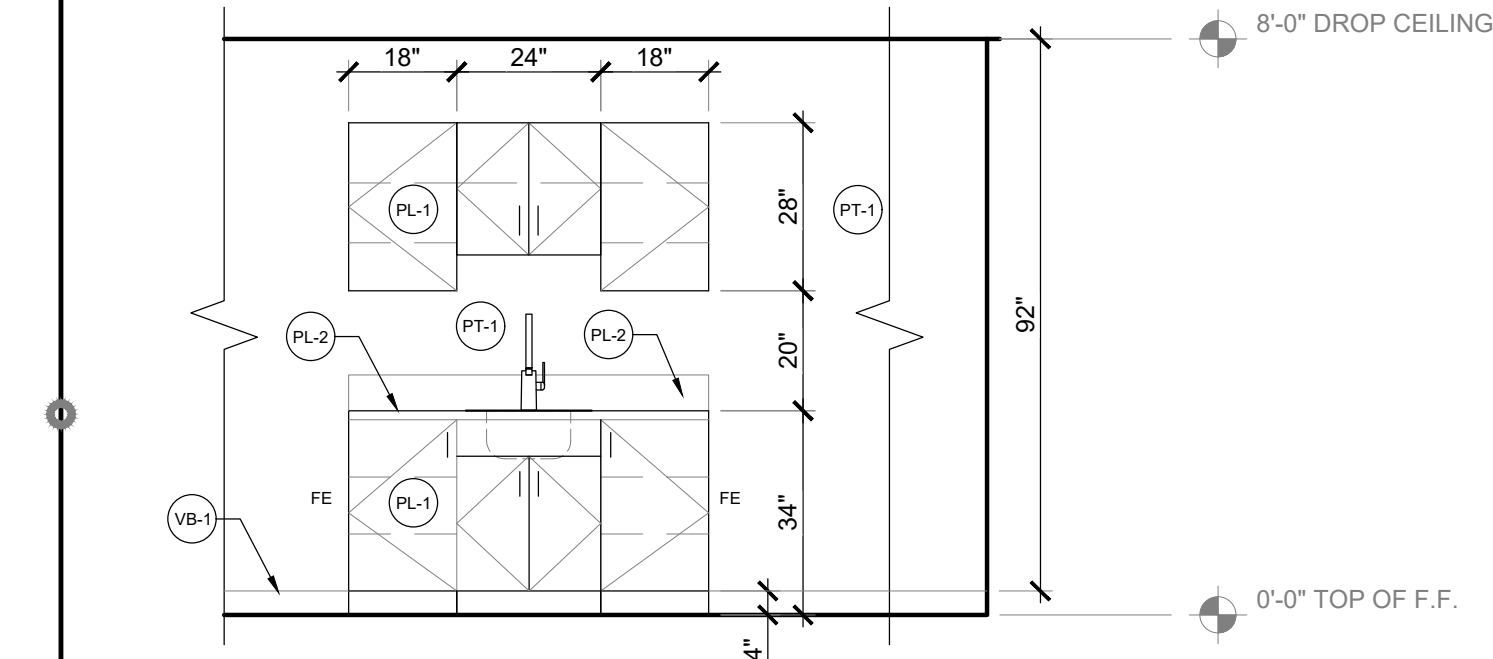
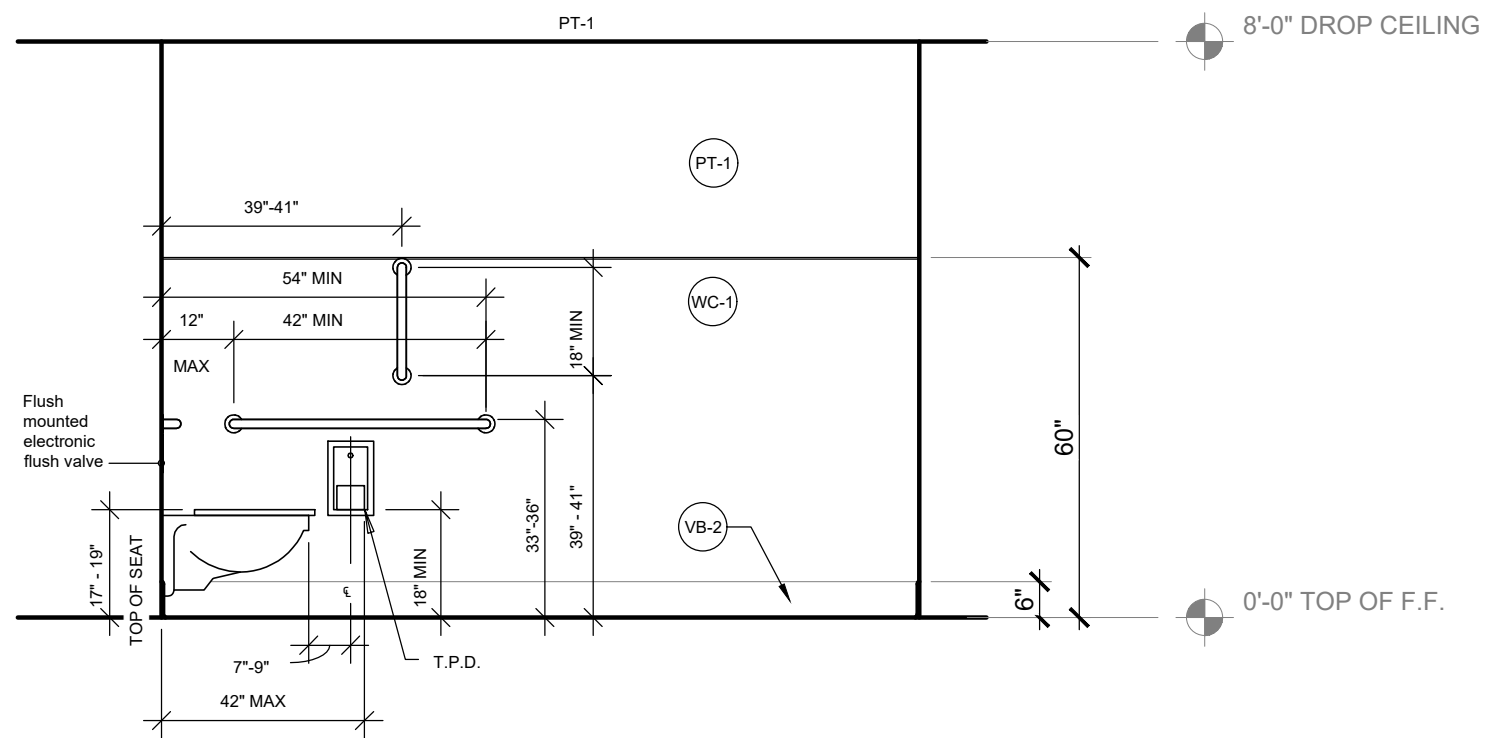


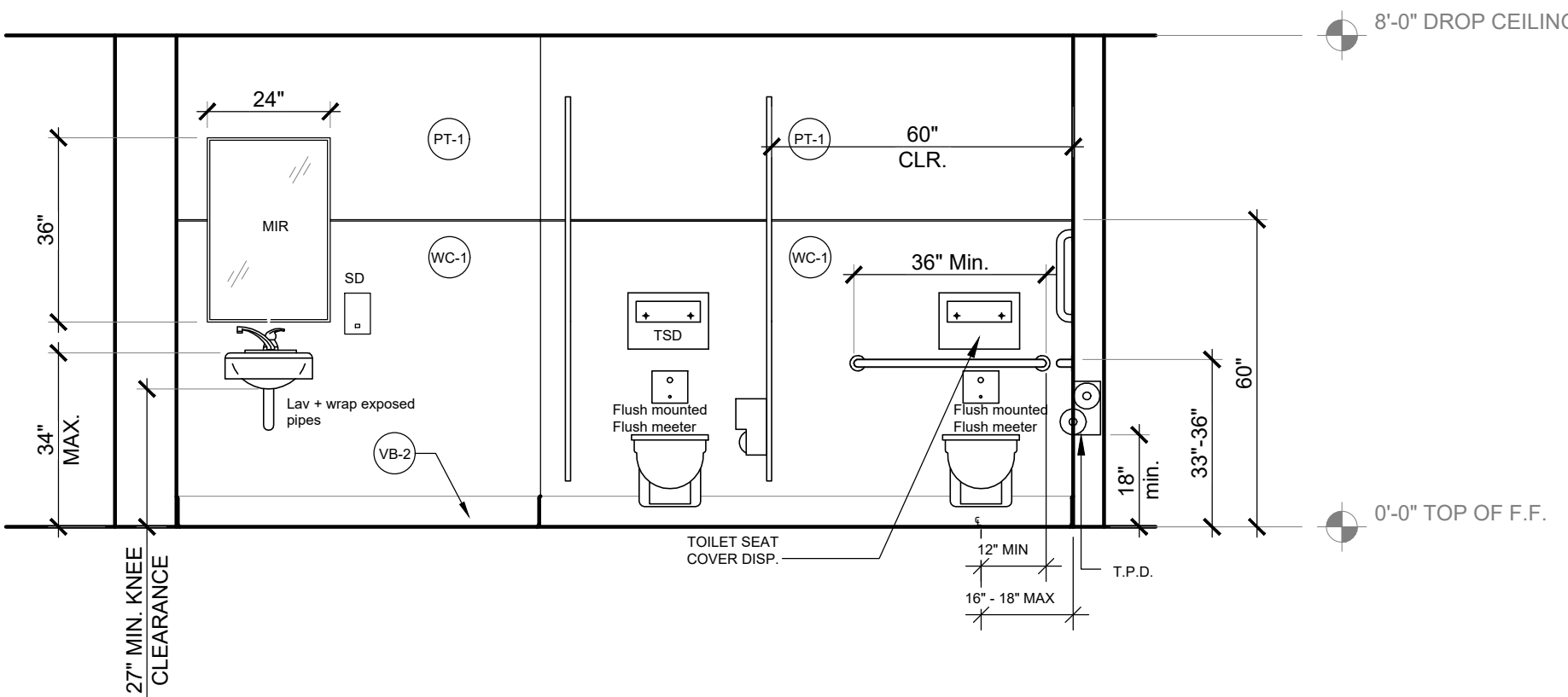
5 EXTERIOR ELEVATION  
A8.01 Scale 3/8"=1'-0"



9 CLASSROOM CASEWORK  
A8.01 Scale 3/8"=1'-0"



10 RESTROOM ELEVATION  
A8.01 Scale 3/8"=1'-0"



11 RESTROOM ELEVATION  
A8.01 Scale 3/8"=1'-0"

TECHNOLOGY GENERAL NOTES


- A. COORDINATE LOCATION/INSTALLATION OF MECHANICAL AND ELECTRICAL WORK WITH ALL OTHER TRADES. NO ASPECT OF A SYSTEM INSTALLATION OR ITS ROUGH-IN SHALL COMMENCE UNTIL PROPER AND TIMELY COORDINATION WITH ALL TRADES ASSOCIATED WITH THE INSTALLATION HAS TRANSPIRED. ITEMS TO BE COORDINATED SHALL INCLUDE BUT NOT BE LIMITED TO: BUILDING STRUCTURE, SHEET METAL, PIPING SYSTEMS, LIGHT FIXTURES, CONDUITS, CABLE TRAYS, ETC. REFER TO ALL GENERAL, MECHANICAL, AND ELECTRICAL DRAWINGS AND SPECIFICATIONS FOR THIS PROJECT.
- B. PROVIDE THE REQUIRED PENETRATIONS WHILE ROUTING CABLING THROUGH THE BUILDING. COORDINATE FIRE RATED PENETRATIONS. PROVIDE CONDUIT SLEEVES AND FIRE STOPPING TO MAINTAIN THAT RATING.
- C. PROVIDE J-HOOKS, BRIDLE RINGS AND OTHER ACCESSORIES REQUIRED TO SUPPORT ALL TELECOMMUNICATIONS AND SECURITY MANAGEMENT SYSTEM CABLING.
- D. REFER TO ELECTRICAL DETAILS DRAWINGS FOR ADDITIONAL INFORMATION.
- E. REFER TO SPECIFICATIONS FOR ADDITIONAL INFORMATION.

FINISH SCHEDULE						
TAG	TYPE	LOCATION(S)	MANUF. / VENDOR	COLOR / DESCRIPTION / ID	TEXTURE / FINISH	NOTES
CPT-1	CARPET		INTERFACE	SPR99 Product# 1388702500 Color: 104526 Midnight		walk-off mat carpet squares for entry's, exits, and hallways
CPT-2	CARPET		INTERFACE	Product# 1462102500 Color: 102419 Pure Accent		(standard carpet squares for offices)
VB-1	VINYL COVE BASE- 4"		FLEXCO	Color: #03 "Charcoal" Product#: C45CW1P003		
VB-2	VINYL COVE BASE- 6"		FLEXCO	Color: #03 "Charcoal" Product#: C60CW1P003	FLAT	
PT-1	PAINT		MILLER PAINT	Color: "Fondant" #E0126	FLAT	
PT-2	PAINT		SHERWIN WILLIAMS	Color: #SW7072 "Online" 235-C2 (Paintable doors and metal trim)	SATIN	
SV-1	SHEET VINYL		MANNINGTON	"Terrene" Color: #18022 "Aluminum"	SATIN	Size: 2 meters (6' 6" width) (in bathrooms and kitchens)
VCT-1	VINYL COMP TILE		ARMSTRONG	#57551 - "Perfect Storm"	EGGSHELL	12"x12"x0.125" (Classrooms)
WC-1	WAINSCOT		WILSONART	Color: #4843-60 "Misted Zephyr" Matte Finish, SA Aluminum		Size: 60" tall, (all walls in restrooms specified)
PL-1	PLASTIC LAMINATE	CASEWORK	WILSONART	Color: #4843-60 "Misted Zephyr" Matte Finish	VERTICAL GRADE	
PL-2	PLASTIC LAMINATE	CTOPS / BACKSPLASH	WILSONART	Color: #D02-60 Dove Gray Matte Finish	SURFACE GRADE	
	WINDOW/DOOR FRAMES			MATCH EXISTING		MATCH EXISTING
	DOOR HARDWARE			MATCH EXISTING		MATCH EXISTING
	HINGES / LOCKSETS / KICKPLATES / CLOSERS			MATCH EXISTING		MATCH EXISTING
	THRESHOLDS / WEATHERSTRIPPING ETC...			MATCH EXISTING		MATCH EXISTING

TECHNOLOGY RESPONSIBILITY MATRIX					
PROVISION RESPONSIBILITIES DEFINED	OFOI	OFCI	CFCI	CFOI	
COMMUNICATIONS - TELECOM SYSTEMS					
ROUGH-IN PATHWAYS AND SLEEVES					
RACKS, FRAMES AND ENCLOSURES					
CABLE MANAGEMENT					
UNINTERRUPTABLE POWER SUPPLIES (RACK MOUNT)					
PLYWOOD BACKBOARDS					
COPPER BACKBONE CABLING					
OPTICAL FIBER BACKBONE CABLING					
COAXIAL BACKBONE CABLING					
COPPER HORIZONTAL CABLING					
OPTICAL FIBER HORIZONTAL CABLING					
COAXIAL BACKBONE CABLING					
DATA COMMUNICATIONS SWITCHES AND HUBS					
DATA COMMUNICATIONS WIRELESS ACCESS POINTS					
VOICE COMMUNICATIONS SWITCHING AND ROUTING EQUIPMENT					
COMMUNICATIONS - AUDIO-VISUAL SYSTEMS:					
ROUGH-IN PATHWAYS AND SLEEVES					
PROJECTOR(S)					
FLAT-PANEL DISPLAYS					
HEAD-END EQUIPMENT					
SECURITY - ACCESS CONTROL:					
ROUGH-IN PATHWAYS AND SLEEVES					
SECURITY MANAGEMENT SYSTEM- HEAD END COMPONENTS					
SECURITY MANAGEMENT SYSTEM - FIELD DEVICES					
SECURITY MANAGEMENT SYSTEM - ELECTRIFIED DOOR HARDWARE					
SECURITY MANAGEMENT SYSTEM - ALL CABLING					
SECURITY - VIDEO SURVEILLANCE:					
ROUGH-IN PATHWAYS AND SLEEVES					
CAMERA(S)					
HEAD-END EQUIPMENT AND COMPONENTS					
SAFETY - FIRE DETECTION AND ALARM:					
ROUGH-IN PATHWAYS AND SLEEVES					
INITIATING FIELD DEVICES (SMOKE, MANUAL PULL, MONITOR MODULES)					
NOTIFICATION APPLIANCES (HORNS, STROBES, SPEAKERS)					
MISCELLANEOUS DEVICES (RELAYS, TEST STATION, ANNUNCIATOR)					

GENERAL NOTE:  
A. MATRIX IS NOT INTENDED TO BE EXHAUSTIVE TO COVER ALL MATERIALS NECESSARY FOR SCOPE AND SHOULD ONLY BE USED TO QUICKLY IDENTIFY SYSTEMS AND RELATED INFRASTRUCTURE INSIDE AND OUTSIDE THE BID OF THIS PROJECT. ANY ITEMS FURNISHED OR INSTALLED BY THE BIDDING CONTRACTOR SHALL COVER ALL REQUIRED APPURTENANCES NECESSARY FOR A COMPLETE SYSTEM. THIS SHALL INCLUDE BUT NOT BE LIMITED TO: EQUIPMENT, ACCESSORIES, TERMINATIONS, TERMINATION COMPONENTS, ALL FINAL CORDAGE CONNECTIVITY, SOFTWARE, PROGRAMMING, AND THE LABOR TO INSTALL.

8 TECHNOLOGY RESPONSIBILITY MATRIX  
A9.01 SCALE: 3' = 1'-0"



LEEKA Architecture and Planning  
Creating Positive Impressions in the Built Environment  
903.644.4222 tel  
success@leekainc.com e-mail  
www.leekainc.com web

Educational Service District 112  
49th St. Early Learning Center  
Tenant Improvement Project: Phase II  
14619 NE 49th St. Suite B, Vancouver, WA 98682

CMI-350735

Revised: 2024-FEB-01 SUBMIT FOR PERMIT

Job No: 2357  
Date: Jan. 9, 2024  
File Size: 24x36  
Permit Application  
DRAWN: NYL\_SF  
CHECKED: NYL  
Sheet Title  
ELEVATIONS  
Sheet Number  
A8.01