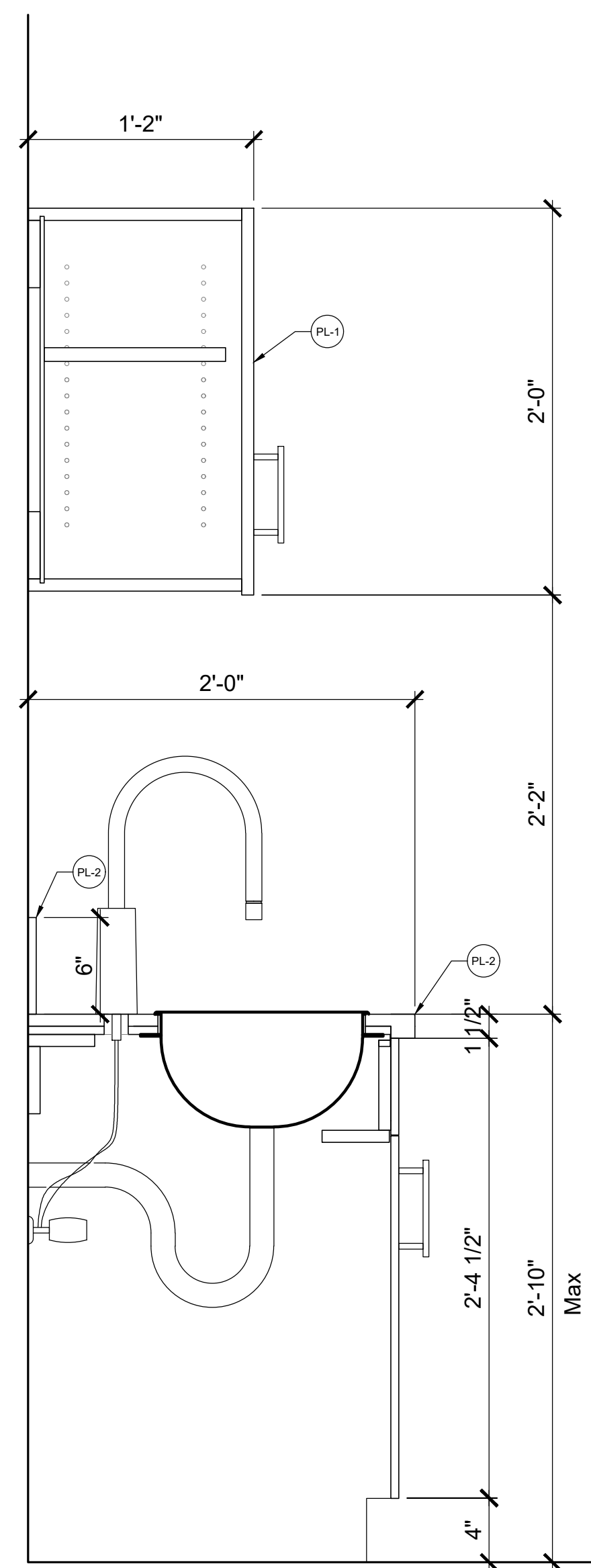
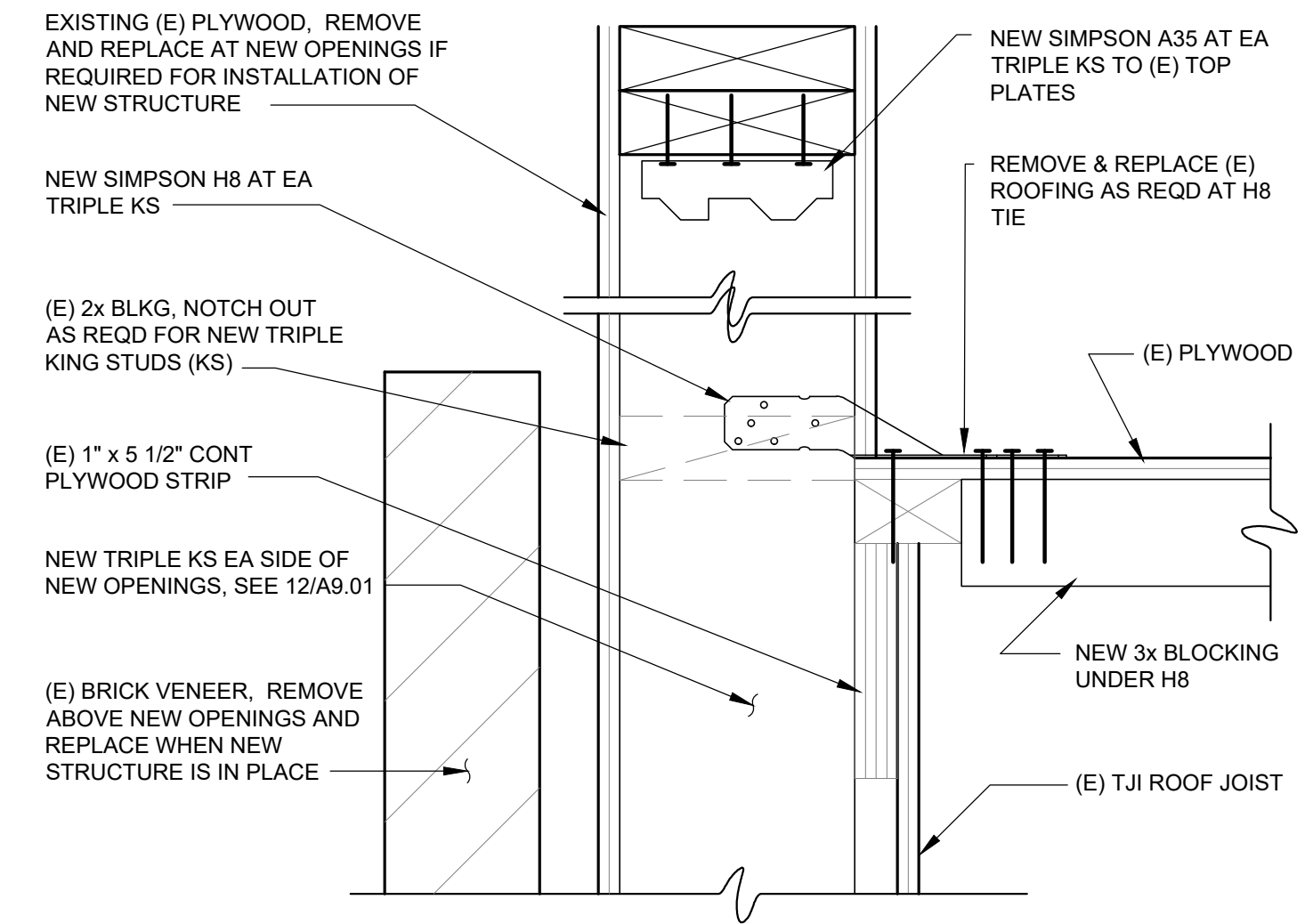


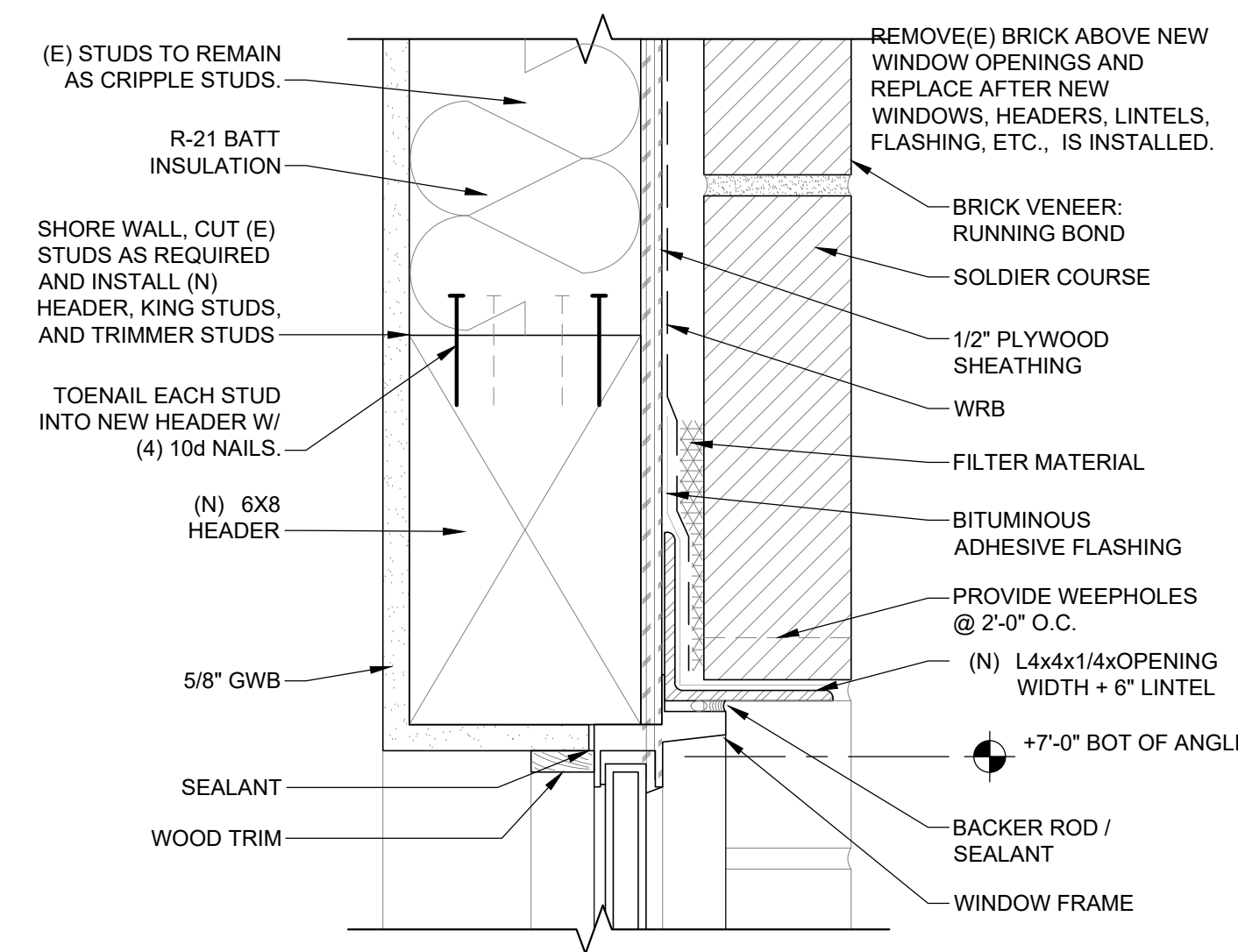
9 CASEWORK SECTION
A9.01 SCALE: 1 1/2" = 1'-0"



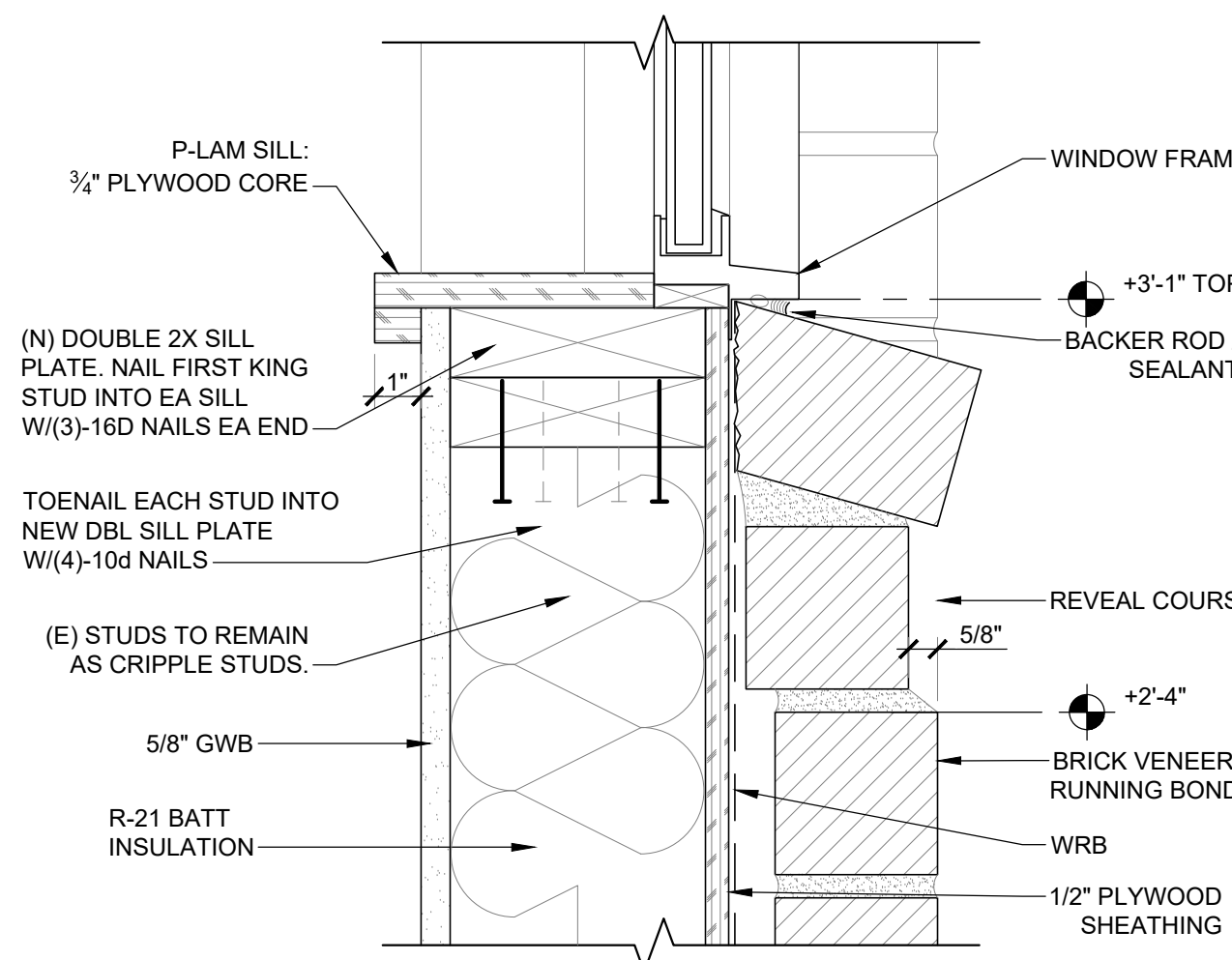
10 CASEWORK SECTION
A9.01 SCALE: 1 1/2" = 1'-0"



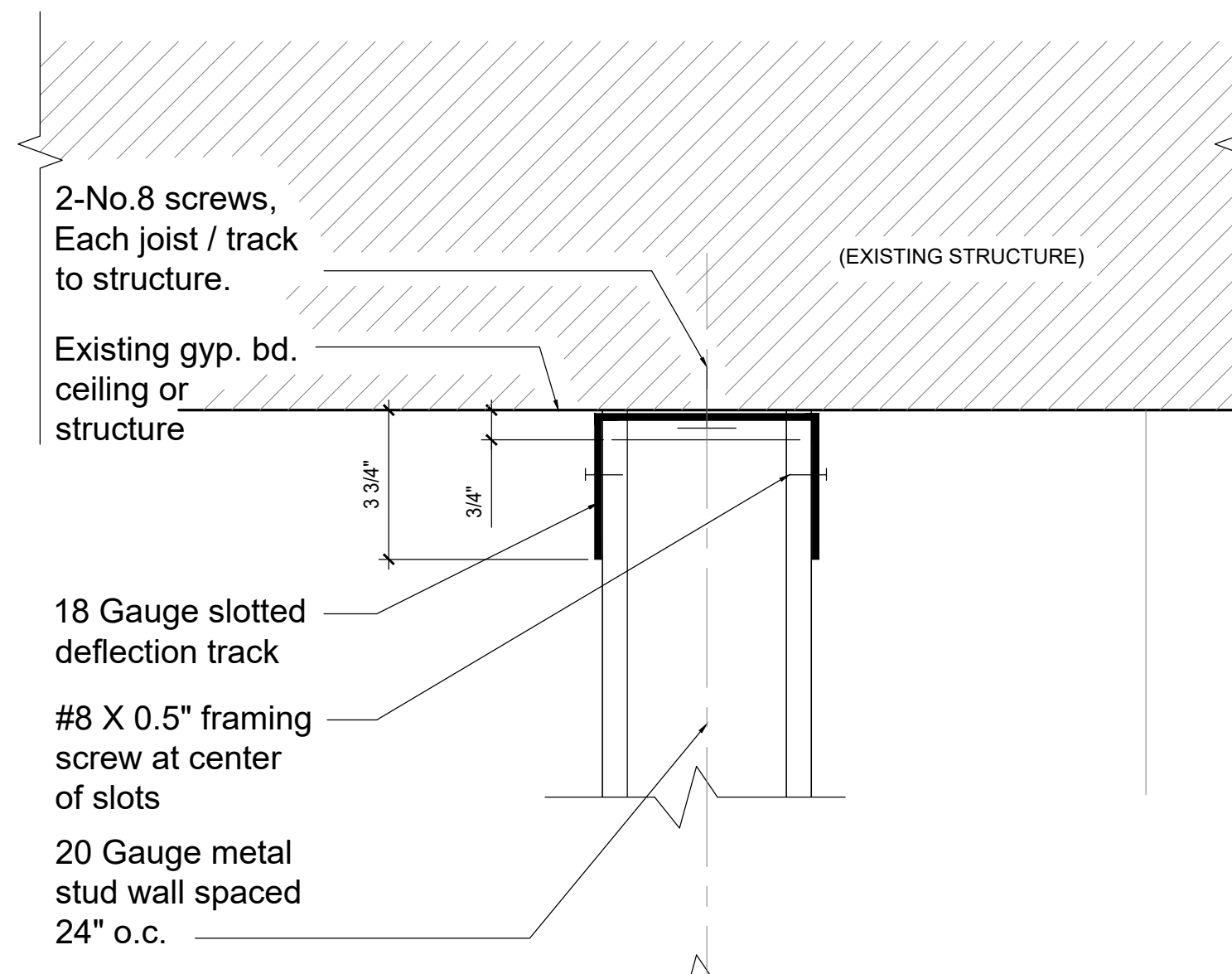
3 KING STUD CONN. TO ROOF DIAPHRAGM
A9.01 SCALE: 3' = 1'-0"



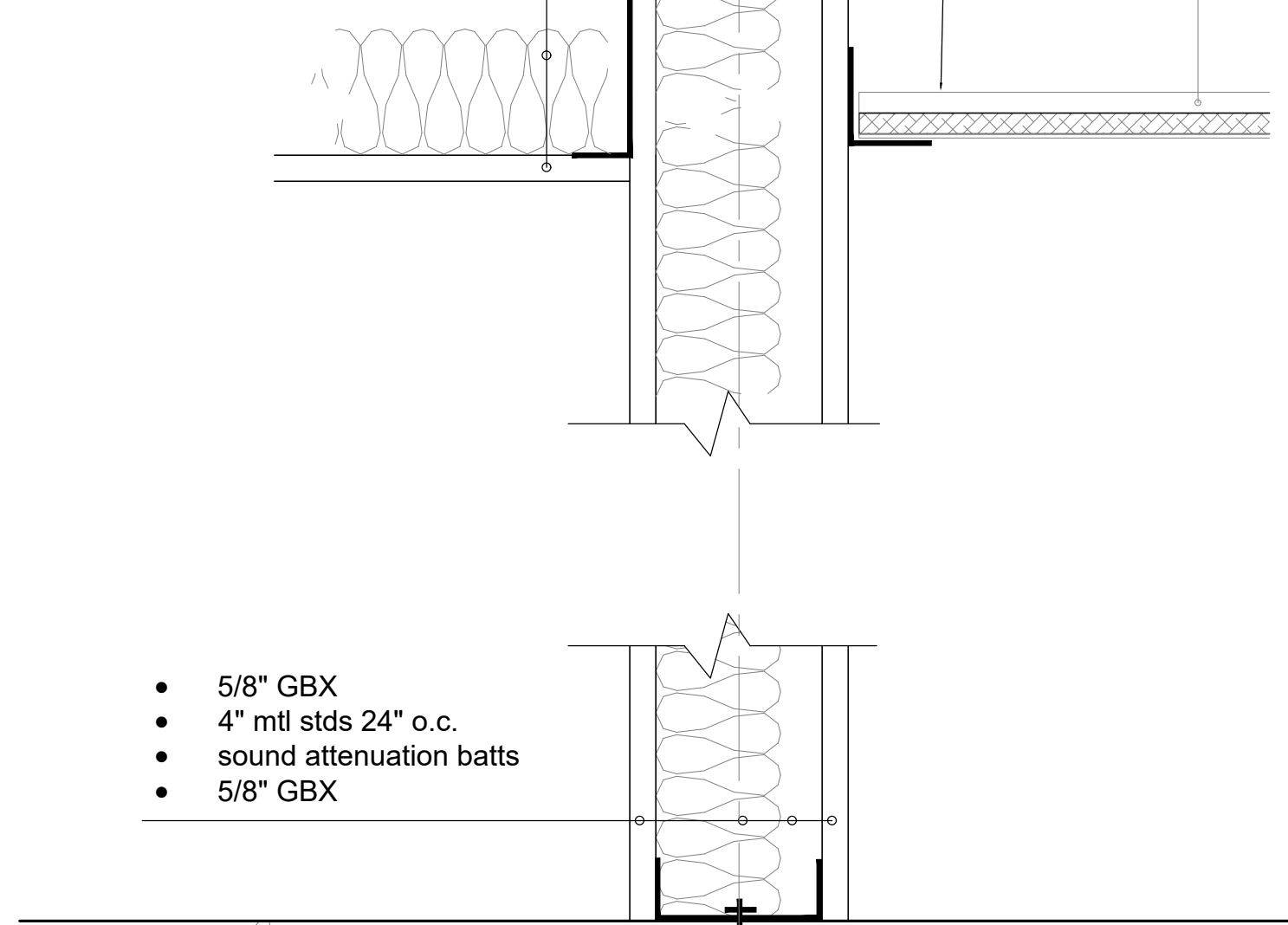
7 WINDOW HEAD DETAIL
A9.01 SCALE: 3' = 1'-0"



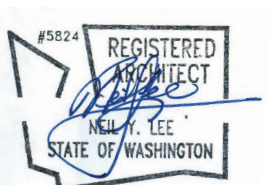
11 WINDOW SILL DETAIL
A9.01 SCALE: 3' = 1'-0"



11 NON-BEARING INTERIOR PARTITION
A9.01 SCALE: 3" = 1'-0"



12 WINDOW JAMB DETAIL
A9.01 SCALE: 3' = 1'-0"



LEEKA Architecture and Planning
Creating Positive Impressions in the Built Environment
603.644.4222 tel
603.644.4222 fax
leeka@leeka.com e-mail
www.leeka.com web

Educational Service District 112
49th St. Early Learning Center
Tenant Improvement Project: Phase II
14619 NE 49th St. Suite B, Vancouver, WA 98682

CMI-350735

Revised: 2024-FEB-01 SUBMIT FOR PERMIT

Job No: 2357
Date: Jan. 9, 2024
File Size: 24x36
Permit Application
DRAWN: NYL_SF
CHECKED: NYL

Sheet Title
DETAILS / SPECIFICATIONS

Sheet Number
A9.01