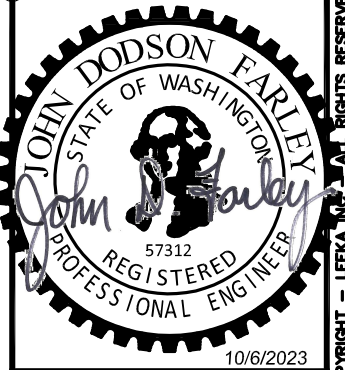


REVISED  
4:07 pm, Oct 06, 2023



**LEEKA Architecture and Planning**  
Creating Positive Impressions in the Built Environment  
1001 SE Water Avenue, Suite 175  
Portland, Oregon 97214  
503.644.4222  
lee@leeka.com  
www.leeka.com

**Tenant Improvement  
ESD112  
Mental Health Facility Phase II**  
2400 NE 65th Ave. Vancouver WA.

**ABBREVIATIONS**

8 Ø	ROUND DUCT DIAMETER, INCHES	HR	HIGH RETURN
12x8	RECTANGULAR DUCT SIZE, INCHES	HS	HIGH SUPPLY
BDD	BACKDRAFT DAMPER	LR	LOW RETURN
CRD	CEILING RADIATION FIRE DAMPER	M	MOTORIZED DAMPER
CS	CEILING SUPPLY	OBD	OPPOSED BLADE DAMPER
CR	CEILING RETURN	OSA	OUTSIDE AIR
DN	DOWN	RA	RETURN AIR
EF	EXHAUST FAN	REL	RELIEF AIR
EXH	EXHAUST AIR	RG	RETURN GRILLE
FA	FRESH AIR	SA	SUPPLY AIR
FC	FAN COIL	SG	SUPPLY GRILLE
FLD	FUSIBLE LINK DAMPER	TYP	TYPICAL
HP	HEAT PUMP	CD	CONDENSATE DRAIN

**GENERAL MECHANICAL NOTES**

1. INSTALL EQUIPMENT IN ACCORDANCE WITH MANUFACTURER'S INSTRUCTIONS AND ALL CURRENT CODES.
2. MAINTAIN RECOMMENDED EQUIPMENT SERVICE CLEARANCES.
3. PROVIDE STRUCTURAL SUPPORT AND SEISMIC BRACING AS REQUIRED.
4. DUCTWORK SHALL BE CONSTRUCTED PER SMACMA CLASS A STANDARDS AND SEALED AIR TIGHT.
5. DUCTWORK SHALL BE CONSTRUCTED AND SEALED PER IMC.
6. PROJECT CLOSE OUT DOCUMENTATION AND USER TRAINING SHALL BE PROVIDED FOR ALL MECHANICAL COMPONENTS. CLOSE OUT DOCUMENTATION SHALL INCLUDE RECORD DOCUMENTS AND O&M MANUALS.

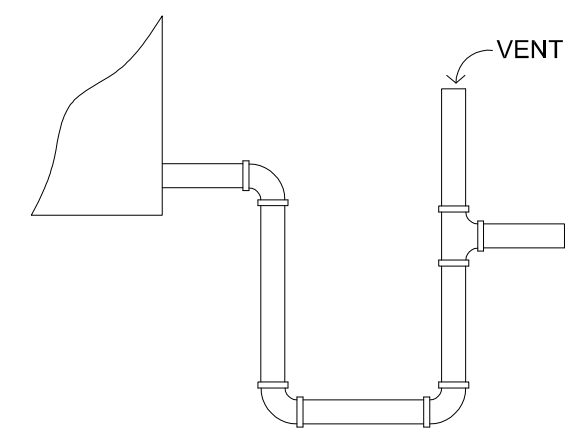
**MECHANICAL BRACING AND SUPPORT NOTES**

1. THE CONTRACTOR IS RESPONSIBLE TO DETERMINE THE MEANS AND METHODS OF EQUIPMENT INSTALLATION AND SUPPORT.
2. PROVIDE SUPPORTS FOR ALL APPARATUS AS SPECIFIED, DETAILED, AS REQUIRED BY THE MANUFACTURERS OF SPECIFIC EQUIPMENT AND THE PROJECT GOVERNING CODE AUTHORITIES. ANCHOR ALL ROOF AND BASE/FLOOR MOUNTED EQUIPMENT WITH SIZE AND SPACING OF ANCHOR BOLTS OR OTHER ATTACHMENT MEANS AS RECOMMENDED BY THE RESPECTIVE EQUIPMENT MANUFACTURER.
3. PROVIDE SEISMIC RESTRAINTS ON ALL MECHANICAL EQUIPMENT IN CONFORMANCE WITH THE OREGON STRUCTURAL SPECIALTY CODE, SECTION 1613 "EARTHQUAKE LOADS" AND ASCE 7. COSTS FOR SEISMIC CALCULATIONS SHALL BE INCLUDED IN THE BID PRICE.
4. PROVIDE DEFERRED SUBMITTALS DIRECTLY TO THE GOVERNING CODE JURISDICTION FOR ANCHORAGE TO FLOORS, ROOFS, ETC., SWAY BRACING AND SEISMIC RESTRAINTS. SUBMITTALS TO SHOW LOCATIONS AND SUFFICIENT SUPPORT DETAILS AS REQUIRED BY THE GOVERNING CODE JURISDICTION.
5. PROVIDE SUPPLEMENTARY DRAWINGS AND CALCULATIONS AS REQUIRED BY GOVERNING CODE JURISDICTIONS NOTING SEISMIC SUPPORT DATA/CALCULATIONS AS REQUIRED FOR PERMIT PURPOSES.

**SEISMIC DESIGN CRITERIA**

BUILDING SYSTEM	RISK CATEGORY	SEISMIC DESIGN CATEGORY	COMPONENT IMPORTANCE FACTOR (Ip)
HVAC	II	D	1.5

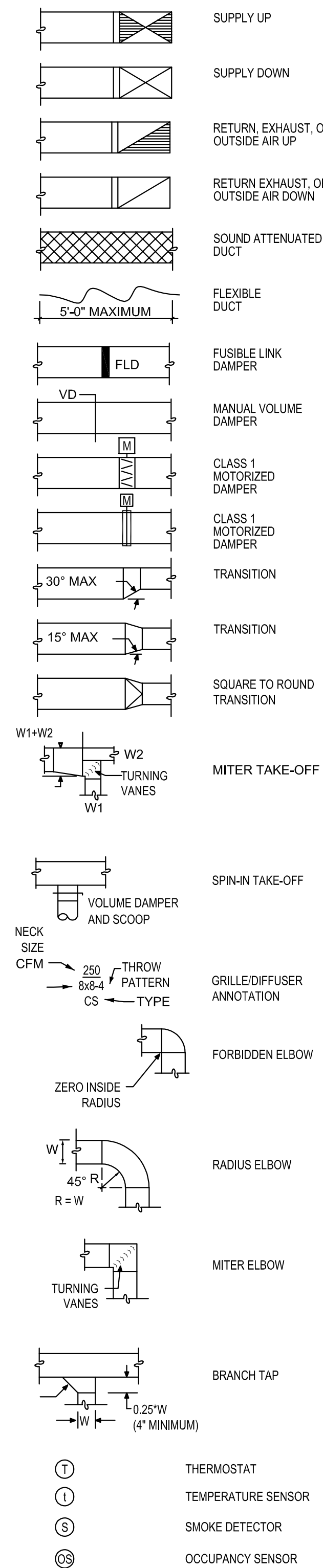
COOLING COIL CAPACITY (TONS)	PIPE SIZE
<20	3/4"
20-40	1"
40-90	1-1/4"
90-125	1-1/2"
125-250	2"



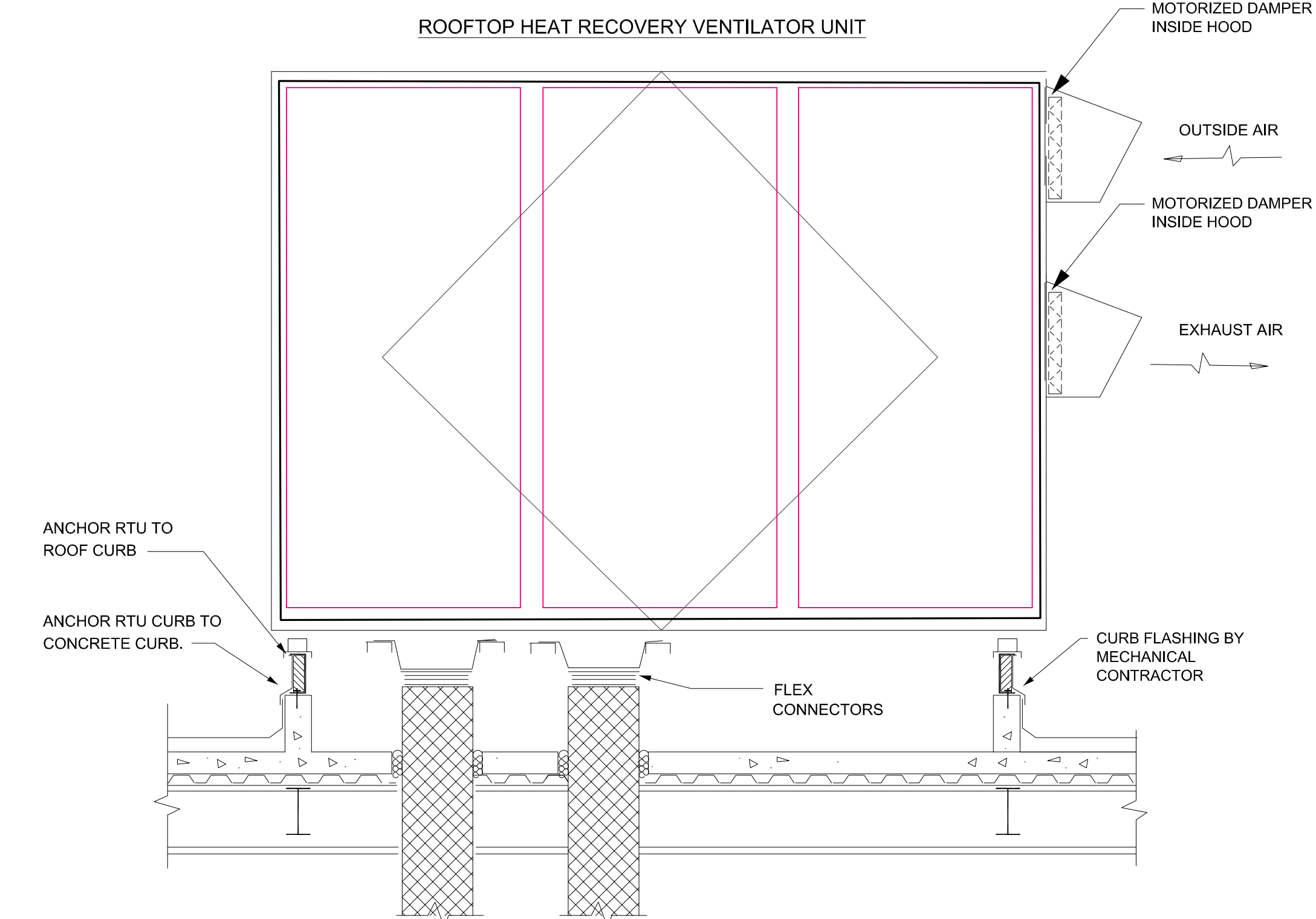
NOTES: CONDENSATE DISPOSAL SHALL COMPLY WITH SECTION 207 OF THE 2018 INTERNATIONAL MECHANICAL CODE.

**2 TYPICAL CONDENSATE DRAIN DETAIL**  
DIAGRAMMATIC

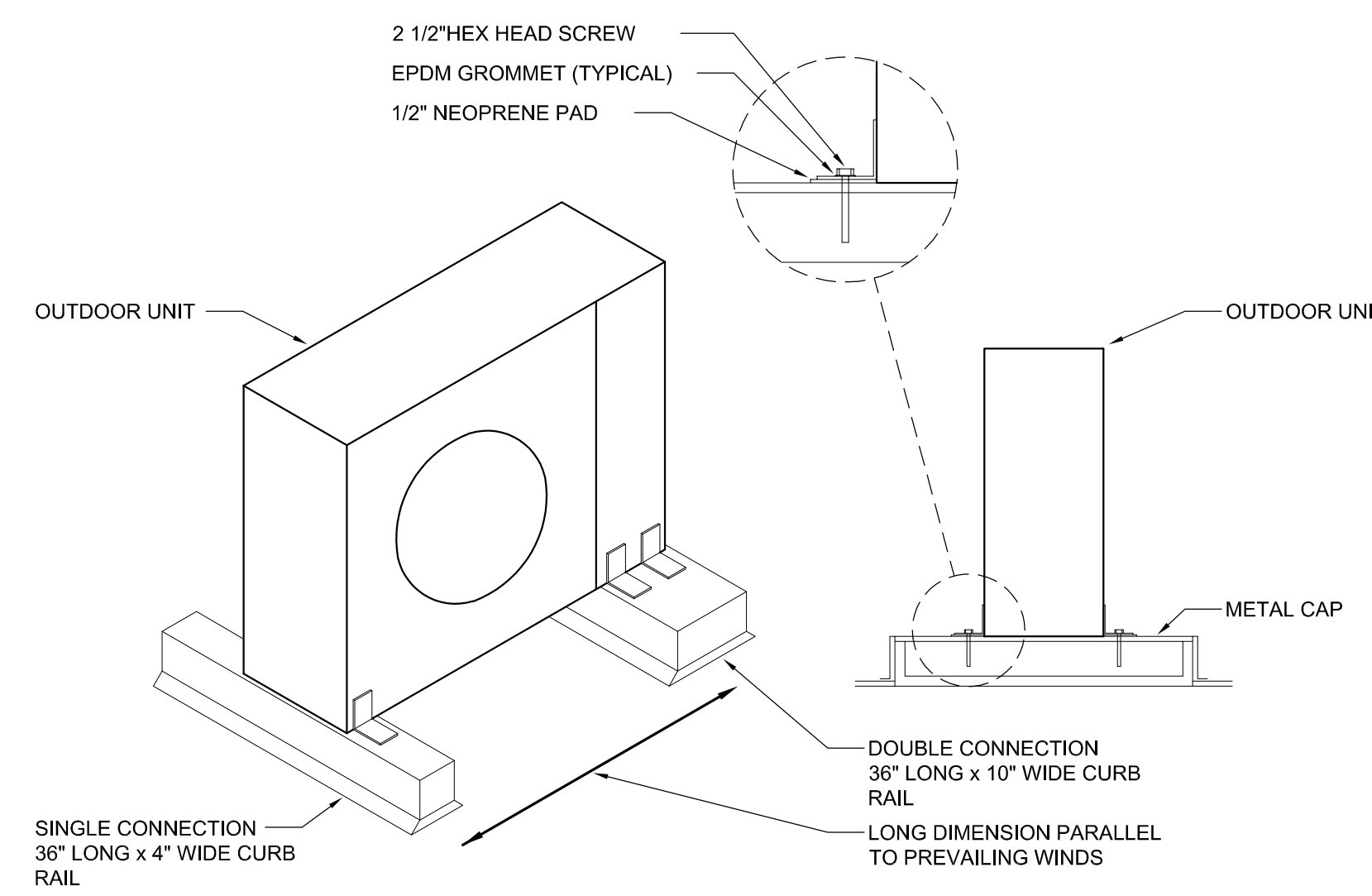
**MECHANICAL LEGEND**



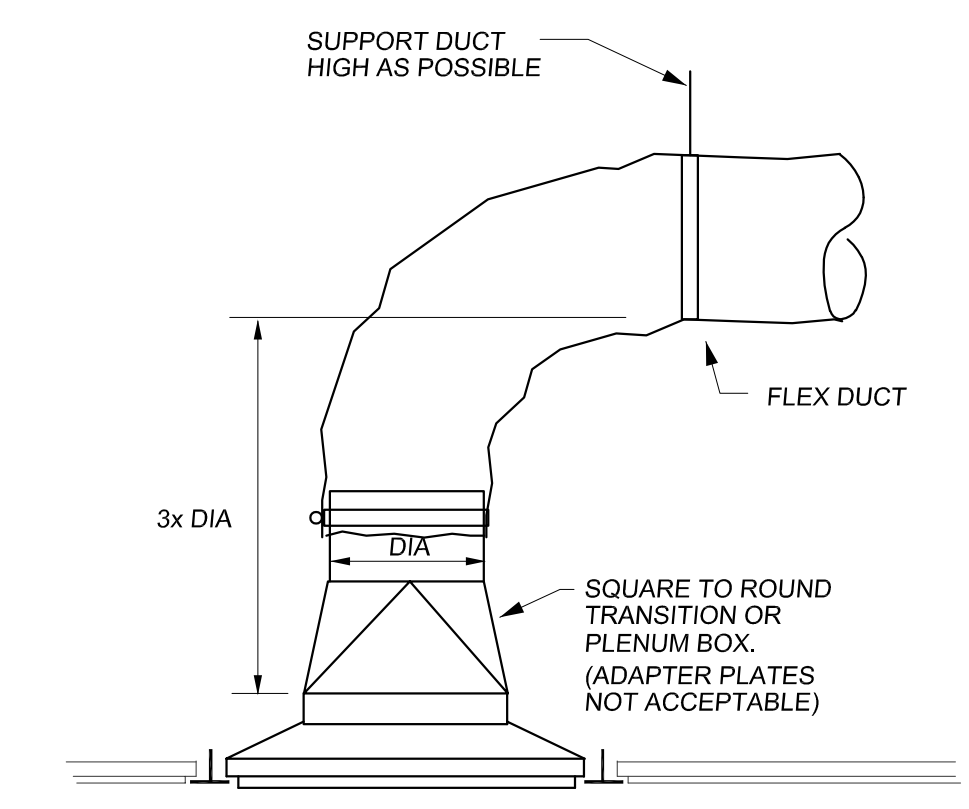
MECHANICAL CONTRACTOR TO PROVIDE ALL STRUCTURAL DETAILS AND CALCULATIONS FOR EQUIPMENT AND CURB MOUNTING REQUIRED BY THE GOVERNING CODE OFFICIAL.



**1 DOAS / HRV DETAIL**  
DIAGRAMMATIC



**3 OUTDOOR HEAT PUMP / CONDENSING UNIT**  
DIAGRAMMATIC



**4 SUPPLY DIFFUSER CONNECTION DETAIL**  
DIAGRAMMATIC



Revised:	DATE: AUG. 10, 2023	APPLICANT EDITS	DATE: AUG. 17, 2023	APPLICANT EDITS	DATE: SEPT. 22, 2023	APPLICANT EDITS	DATE: OCT. 03, 2023
Job No:	2246						
Date:	February 18, 2023						
File Size:	24x36						
Progress set							
DRAWN:							
CHECKED:							
Sheet Title	MECHANICAL LEGEND AND DETAILS						
Sheet Number	M0.00						