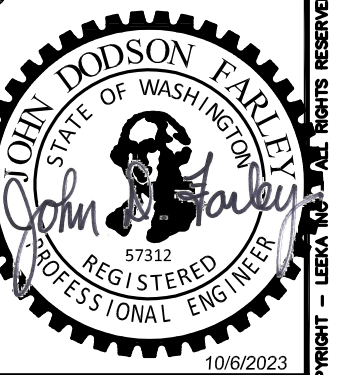


REVISED  
4:07 pm, Oct 06, 2023



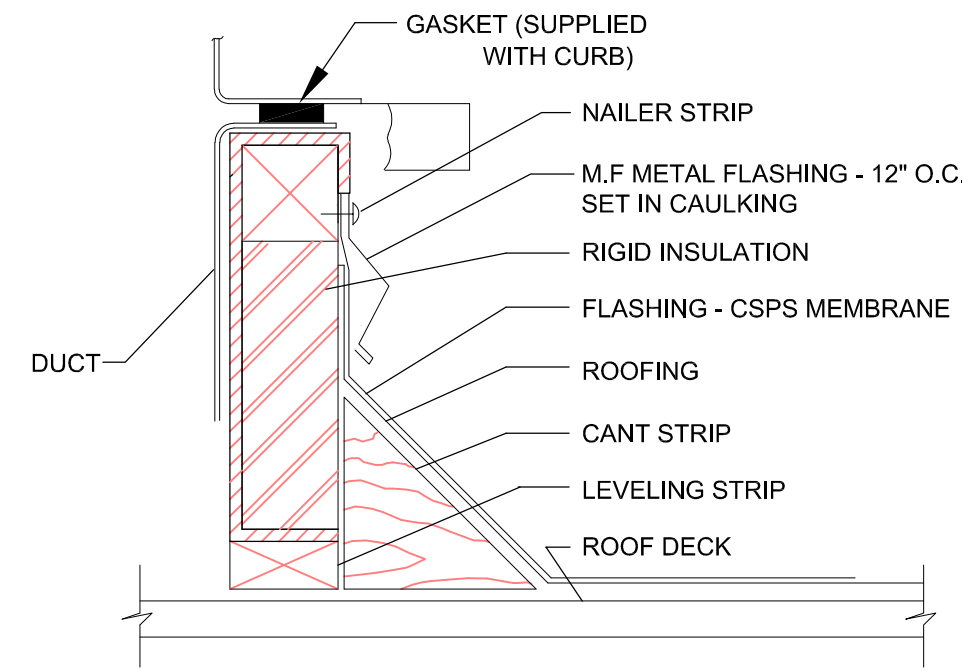
LEEKA Architecture and Planning  
Creating Positive Impressions in the Built Environment  
603.644.4222  
503.644.4222  
success@leeka.com  
www.leeka.com

Tenant Improvement  
ESD112  
Mental Health Facility Phase II  
2400 NE 65th Ave. Vancouver WA.

DATE: AUG. 10, 2023	DATE: AUG. 17, 2023	DATE: SEPT. 22, 2023	DATE: OCT. 03, 2023
PCR 01	APPLICANT EDITS	APPLICANT EDITS	APPLICANT EDITS

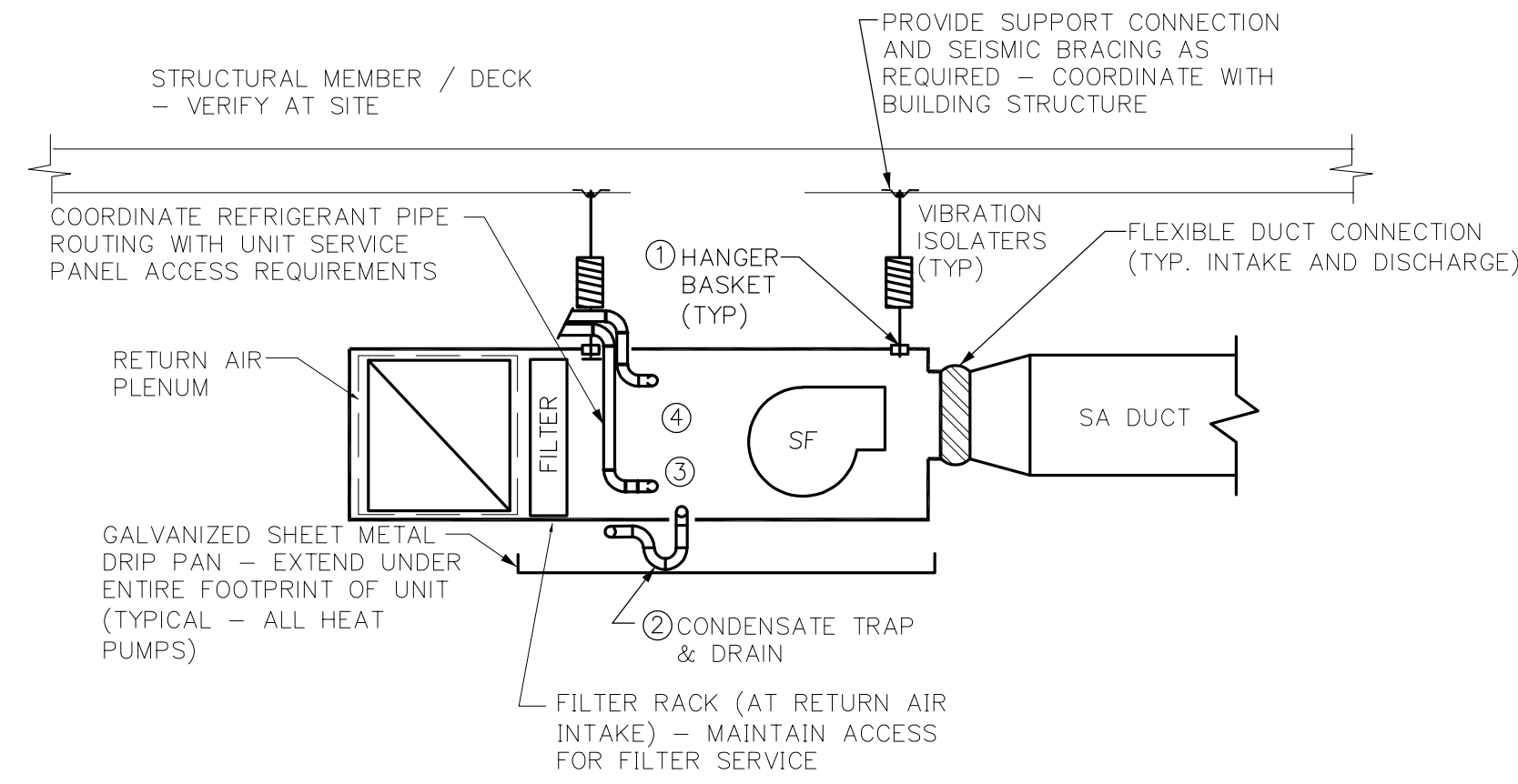
Job No:	2246
Date:	February 18, 2023
File Size:	24x36
Progress set	
DRAWN:	
CHECKED:	
Sheet Title	MECHANICAL DETAILS
Sheet Number	M0.01

SYSTEM DESIGN CONSULTANTS INC.  
333 SE SECOND AVE, SUITE 100  
PORTLAND OREGON 97214  
503-248-0207  
CONTACT: JEFFREY DAVIS



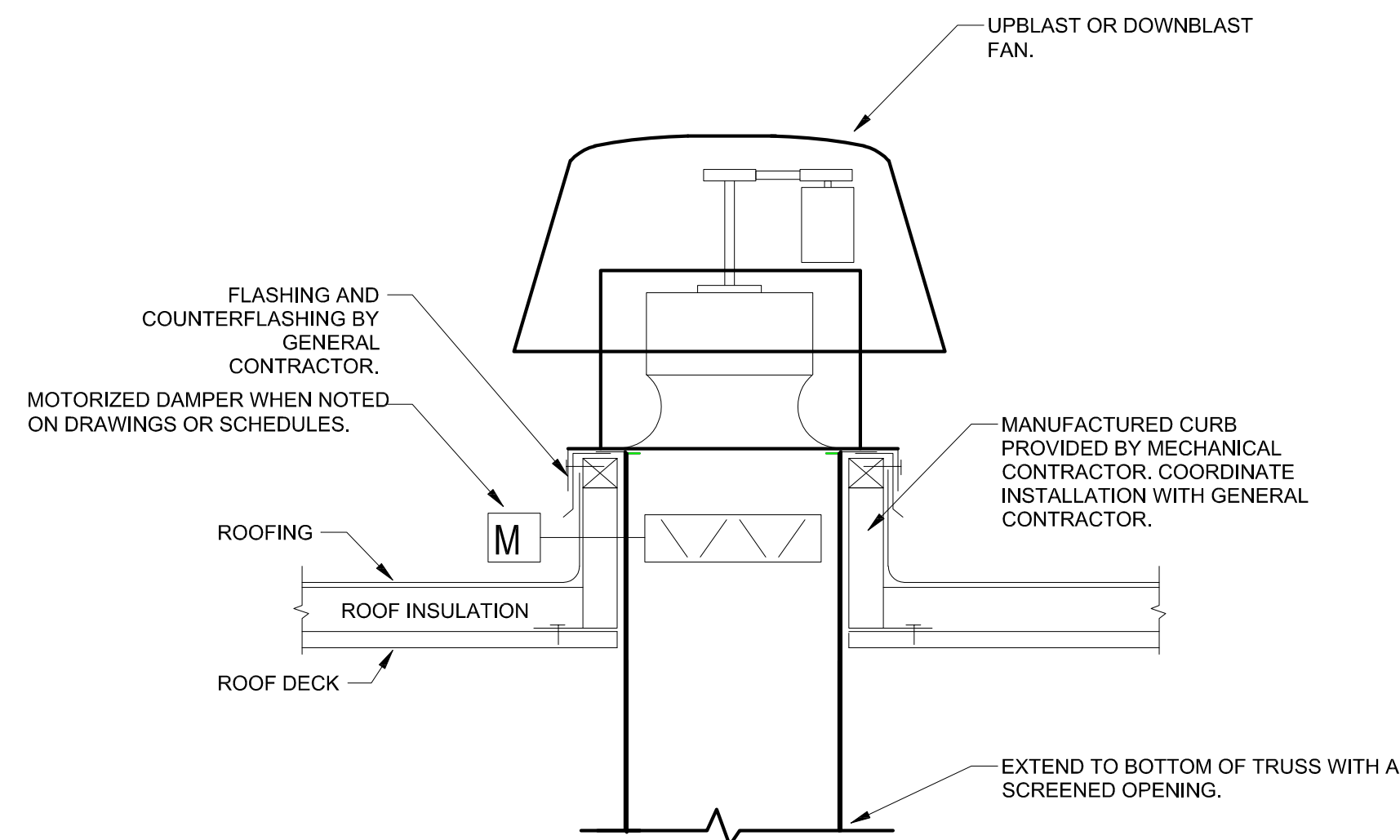
THIS DETAIL DENOTES GENERAL FLASHING AND CURB CONFIGURATION. VERIFY THE EXACT REQUIREMENTS OF THE EQUIPMENT CURBS AND THE ARCHITECTURAL ROOFING SYSTEM USED. INSTALL CURBS IN ACCORDANCE WITH THE ROOFING MANUFACTURERS INSTRUCTIONS. COORDINATE WITH ARCHITECTURAL DETAILS AND SPECIFICATIONS.

1 ROOF CURB DETAIL  
DIAGRAMMATIC TYPICAL ROOFTOP AIR HANDLING UNITS



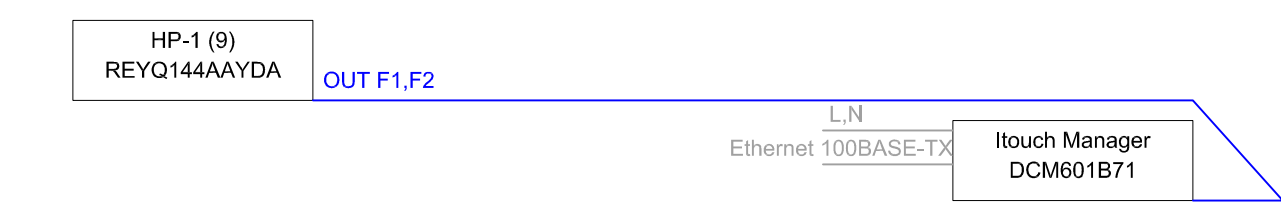
- COORDINATE SUPPORT WITH MANUFACTURER'S INSTALLATION INSTRUCTIONS
- PROVIDE A WATER DETECTOR IN THE SHEET METAL DRIP PAN TO SHUT DOWN THE UNIT ON SENSING MOISTURE - DRIP PAN TO BE CONSTRUCTED IN CONFORMANCE WITH SECTION 307.2.3 OF THE OMSC
- PROVIDE FLEXIBLE CONNECTIONS AT ALL PIPING CONNECTIONS TO THE FAN COIL UNITS
- LINE VOLTAGE / CONTROLS / SERVICE ACCESS - VERIFY REQUIREMENTS WITH EXACT UNIT CONFIGURATION AND MAINTAIN NEC AND MANUFACTURER'S REQUIRED SERVICE CLEARANCES

2 CONCEALED DUCTED FAN COIL DETAIL  
DIAGRAMMATIC

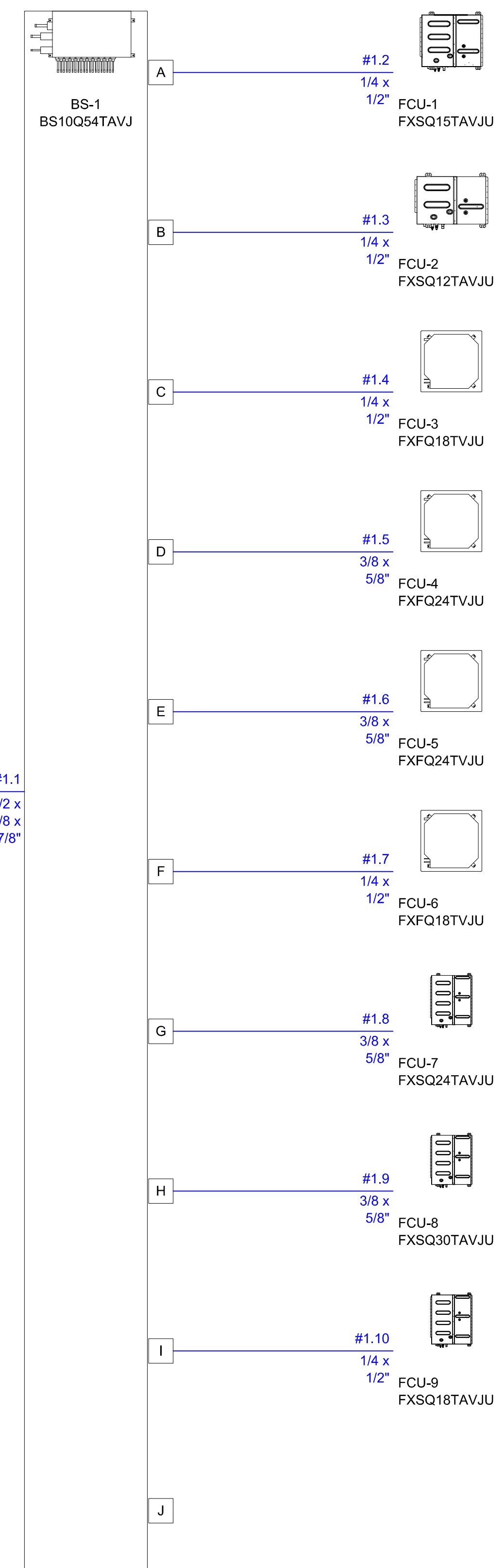
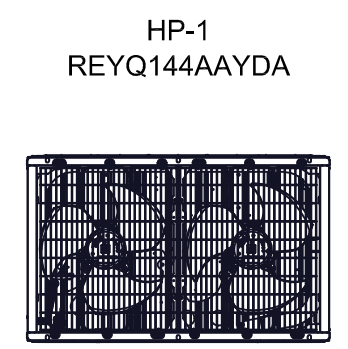


NOTES:  
1. THIS DETAIL DENOTES GENERAL FLASHING AND CURB CONFIGURATIONS. VERIFY THE EXACT REQUIREMENTS OF THE CURB SYSTEM AND ROOFING SYSTEM USED. INSTALL CURBS IN ACCORDANCE WITH THE ROOFING MANUFACTURER'S INSTRUCTIONS. COORDINATE WITH ARCHITECTURAL DETAILS AND SPECIFICATIONS.  
2. PROVIDE ROOF LEVELING CURB AS REQUIRED.

3 EXHAUST FAN DETAIL  
DIAGRAMMATIC



4 VRF CONTROLLER WIRING SCHEMATIC  
DIAGRAMMATIC



#1.1  
1/2 x  
1 1/8 x  
7/8"