



2023-24 Annual Report





1-2-3 Grow and Learn is a **FREE** drop-in resource for **ALL** families with children ages birth to five years old.

Our caregiver-child playgroup takes place in community locations and offers children opportunities to build essential skills. Children and families engage in activities that support growth and development, practice social skills, connect with community partners and neighborhood schools, and build relationships with other caregivers. Increased familiarity with schools and community partners leads to more engaged caregivers and eager learners.

Only 58% of Washington's kindergarteners are fully prepared for success in all six developmental domains, according to the Washington Kindergarten Inventory of Developing Skills (WaKIDS). 1-2-3 Grow and Learn addresses this by focusing on activities that promote school readiness through age-appropriate experiences.

Our playgroups are based on the belief that caregivers are the most important people in a child's learning and development. To honor this, our sessions empower adults to learn alongside their children and provide ideas for extending learning at home. According to feedback, children participating in 1-2-3 Grow and Learn sessions show a 60% increase in focus and a 58% increase in their ability to share with others.

Funding for 1-2-3 Grow and Learn

Our weekly playgroup sessions were funded through the following contracts and grants in 2023-2024:

- Child Care Aware of Washington
- Clark County Mental Health Sales Tax Grant
- Washougal School District

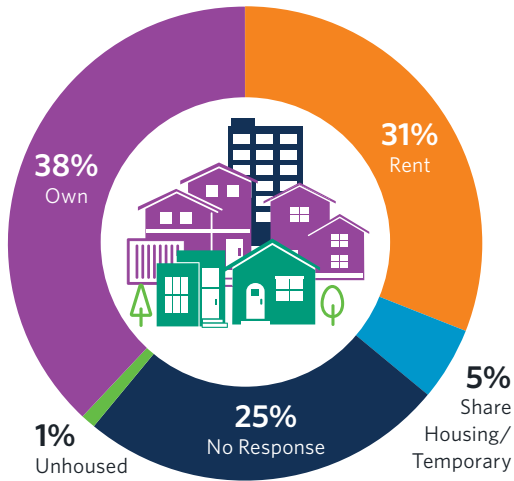
If you are interested in contracting with us or have questions about the program, please reach out to Michelle Aguilar at 360-952-3363.

Our Objectives

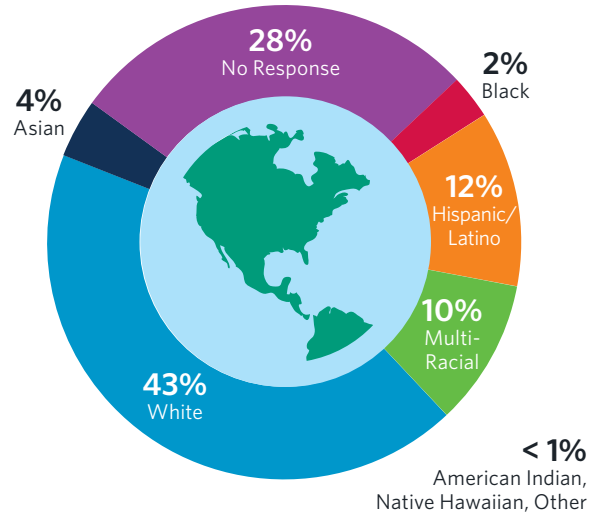
- ★ Engage in activities that promote child growth and development.
- ★ Connect families to each other, promoting interdependence and community.
- ★ Build connections with neighborhood schools and their staff.
- ★ Gain access to community partners and their resources.
- ★ Offer the Ages and Stages Questionnaire, Third Edition (ASQ-3) developmental screening tool.
- ★ Utilize Washington State Early Learning and Development Guidelines (ELDGs) and build Executive Functioning Skills.

Participant Demographics

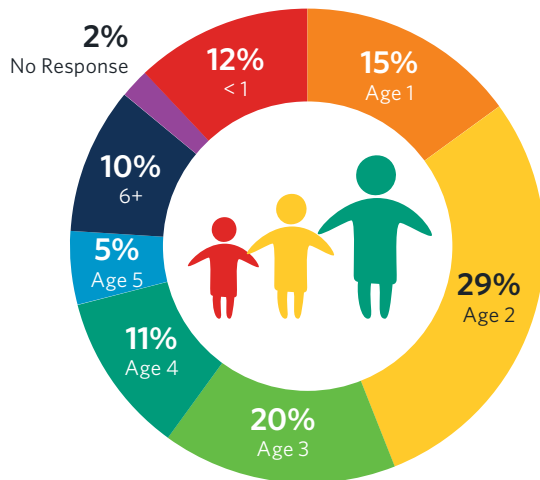
Housing



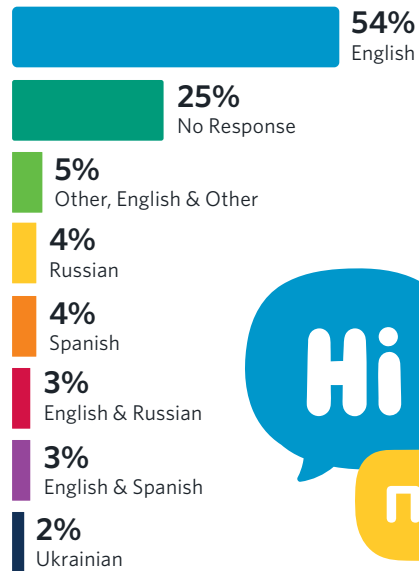
Ethnicity



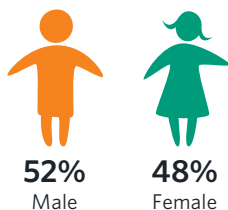
Age



Home Language



Gender





Playgroup Participation

Total number of kids, caregivers, and sessions:

240
distinct kids served, ages 0-5 years

215
distinct caregivers

137
sessions offered

1,297
total child connections

1,032
total caregiver connections

Caregiver comments about playgroups:

“ It has greatly and positively impacted our child/family. We love coming every week. ”

“ It's a consistent activity my child can do each week and she's become familiar with teachers and other children. ”

“ My child can see and socialize with other children. I like that there are crafts and that it's free. ”

“ My children started to understand English. Also they are starting to play more with other children. ”

“ It's something he is getting into routine with, him learning still to play with others nicely. ”

“ I love seeing my grandchild look forward to coming to classes. ”

“ This is a great class that's been very beneficial. ”

“ The staff is outstanding! Interactive, upbeat to encourage children participation and teacher/child connections. ”

“ It has helped my grandson become more social with other children, as socializing was limited with him being with grandma only. ”

“ I have seen an increase in my child trying to talk and use words. ”

Child & Caregiver Survey 2023-24

Children who attended 1-2-3 Grow and Learn playgroups were observed, and caregivers were asked eight questions about their child(ren). They either marked 'increased' or 'same'. The caregivers (parents/guardians) were also surveyed about their own behaviors and feelings.



Skills Assessed

Q: Since attending 1-2-3 Grow and Learn, the child(ren) had an *increase* in these areas...

- 1. Is willing to play with others in group settings 92%
- 2. Tries different ways to solve problems 75%
- 3. Is able to smoothly transition between activities 67%
- 4. Is able to communicate their needs 83%
- 5. Is able to follow routines 83%
- 6. Uses calming strategies 42%
- 7. Shares with other children 58%
- 8. Is able to control impulses 50%

Caregivers Surveyed

Q: Since attending 1-2-3 Grow and Learn, caregivers had an *increase* in...

- 1. Understanding of the importance of playing with their child 77%
- 2. Strategies to redirect or manage their child's behavior 62%
- 3. Understanding of how to support their child's growth and development 69%
- 4. The amount of time they spent doing activities their child chooses 70%
- 5. Knowledge of child development 83%
- 6. Their confidence as a caregiver 62%
- 7. Connection to other families 62%
- 8. Knowledge to help their child prepare for school 77%
- 9. Knowledge about local resources and who to ask 62%

How did you hear about 1-2-3 Grow and Learn?

- 26% Family Member or Friend
- 23% No Response
- 14% ESIT/Early Intervention Referral
- 9% ESD 112 Website
- 8% Other
- 5% Grow & Learn Outreach
- 5% Community Event
- 4% School Flier / Newsletter
- 4% Social Media
- 2% School District Website

Our Framework

We use the latest research and guidance in early childhood development as our framework for structuring activities.

Washington State Early Learning and Development Guidelines

Washington State created the Early Learning Development Guidelines to support families and other adults in a child’s life to understand the six developmental domains that all children work within to gain knowledge and skills necessary for school and life.

The Guidelines are organized by age and provide a progression of developmental tasks and learning across the areas of development, along with activities to support their growth. The six areas are:



About me, my family and culture



Touching, seeing, hearing, and moving around



Communicating (literacy)



Building relationships



Growing up healthy



Learning about my world

1-2-3 Grow and Learn uses these guidelines as a foundation for planned learning activities as well as to provide opportunities to engage parents and caregivers in children’s learning and development.

Executive Function

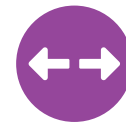
Executive Functions are a set of skills that children develop over time to help them function in daily life. These skills are necessary for problem solving, taking turns, and following directions. These skills include:



Working Memory:
the ability to hold information, recall it, and use it



Inhibitory Control:
the ability to pause and process before reacting to a situation or temptation.



Cognitive Flexibility:
the ability to make changes to routines and priorities.

To help children enhance these skills, we use activities and techniques that help them recognize and practice these skills. Activity cards provide information about skills that are being practiced, and the intent is for the facilitator to point them out to both the children and the adults in the room.



ASQ-3 Developmental Screenings

The Ages and Stages Questionnaires, Third Edition (ASQ-3), is a developmental screening tool that pinpoints developmental progress in children between the ages of one month to 5 ½ years.

Evidence shows that the earlier development is assessed, the greater the chance a child has to reach their potential.

- ★ Over the last year we offered ASQ-3 screenings. In partnership with the caregivers, we completed **69** screenings.
- ★ Of those completed, we referred **16** children to additional services through Early Support for Infants and Toddlers or through the child's home school district.

1-2-3 Grow and Learn Staff



JULIE JACOBSON
Program Coordinator



SHANA ARMSTRONG
Facilitator and Home Visitor



ASHLIE CHAMBERLAIN
Facilitator and Home Visitor

Caregiver comments about our amazing staff:

“ They are sure to communicate services/classes available through the school district to all parents. ”

“ They are always friendly and supportive. My child feels comfortable around them and enjoys interacting with them. ”

“ They are skilled teachers with a great deal of knowledge regarding child development. ”

“ Muy amables y me an ayudado como aprender con mi hija. ”

“ Love them! They help kids on their level. ”

“ Nice, friendly, patient and give lots of information. ”



Connecting families to community resources, conducting developmental screenings, and promoting school readiness.



EDUCATIONAL SERVICE DISTRICT 112

For a current list of 1-2-3 Grow and Learn locations, scan the QR code or visit www.esd112.org/ece & click 1-2-3 Grow and Learn.



2500 NE 65th Ave., Vancouver, WA 98661 • esd112.org/ece • (360) 952-3466