



2024-25 Annual Report





1-2-3 Grow and Learn is a **FREE** drop-in resource for **ALL** families with children ages birth to five years old.

Our caregiver-child playgroup takes place in community locations and offers children opportunities to build essential skills. Children and families engage in activities that support growth and development, practice social skills, connect with community partners and neighborhood schools, and build relationships with other caregivers. Increased familiarity with schools and community partners leads to more engaged caregivers and eager learners.

Only 48% of Washington's kindergarteners are fully prepared for success in all six developmental domains, according to the Washington Kindergarten Inventory of Developing Skills (WaKIDS). 1-2-3 Grow and Learn addresses this by focusing on activities that promote school readiness through age-appropriate experiences.

Our playgroups are based on the belief that caregivers are the most important people in a child's learning and development. To honor this, our sessions empower adults to learn alongside their children and provide ideas for extending learning at home. According to feedback, children participating in 1-2-3 Grow and Learn sessions show a 81% increase in focus and a 85% increase in their ability to share with others.

Funding for 1-2-3 Grow and Learn

Our weekly playgroup sessions were funded through the following contracts in 2024-25:

- Child Care Aware of Washington
- Early Head Start
- Educational Service District 112
- Vancouver Public Schools
- Washougal School District

If you are interested in contracting with us or have questions about the program, please reach out to Michelle Aguilar at 360-952-3363.

Our Objectives

- ★ Engage in activities that promote child growth and development.
- ★ Connect families to each other, promoting interdependence and community.
- ★ Build connections with neighborhood schools and their staff.
- ★ Gain access to community partners and their resources.
- ★ Offer the Ages and Stages Questionnaire, Third Edition (ASQ-3) developmental screening tool.
- ★ Utilize Washington State Early Learning and Development Guidelines (ELDGs) and build Executive Functioning Skills.

Our Framework

We use the latest research and guidance in early childhood development as our framework for structuring activities.

Washington State Early Learning and Development Guidelines

Washington State created the Early Learning Development Guidelines to support families and other adults in a child's life to understand the six developmental domains that all children work within to gain knowledge and skills necessary for school and life.

The Guidelines are organized by age and provide a progression of developmental tasks and learning across the areas of development, along with activities to support their growth. The six areas are:



**About me, my family
and culture**



**Touching, seeing, hearing,
and moving around**



**Communicating
(literacy)**



Building relationships



Growing up healthy



Learning about my world

1-2-3 Grow and Learn uses these guidelines as a foundation for planned learning activities as well as to provide opportunities to engage parents and caregivers in children's learning and development.

Executive Function

Executive Functions are a set of skills that children develop over time to help them function in daily life. These skills are necessary for problem solving, taking turns, and following directions. These skills include:



Working Memory:
the ability to hold
information, recall it,
and use it



Inhibitory Control:
the ability to pause and
process before reacting to a
situation or temptation.



Cognitive Flexibility:
the ability to make
changes to routines
and priorities.

To help children enhance these skills, we use activities and techniques that help them recognize and practice these skills. Activity cards provide information about skills that are being practiced, and the intent is for the facilitator to point them out to both the children and the adults in the room.



Playgroup Participation

Total number of kids, caregivers, and sessions:

520

distinct kids
served, ages
0–5 years

493

distinct
caregivers

262

sessions
offered

2,923

total child
connections

2,519

total caregiver
connections

Caregiver comments about playgroups:



I love that my daughter gets to engage in a social setting with supportive activities. I like to get ideas about activities for home.



I am so very grateful for this program. It is the highlight of our week! Thank you for all that you guys do!



It has been so helpful for our grandson to interact with other children.



It's helped me as a parent be more confident with my child's play and socializing with other parents, as this is my first baby.



I understand how to teach through play and communicate much better with my child since attending.



Our daughter has grown in such a positive way since attending Grow and Learn.



I love the sing along songs and storytime.



A mi hija le encanta compartir con otros niños y aprender de los profesores en cada clase.



I feel more confident and connected. My husband and I get so excited when she starts doing things from class at home.

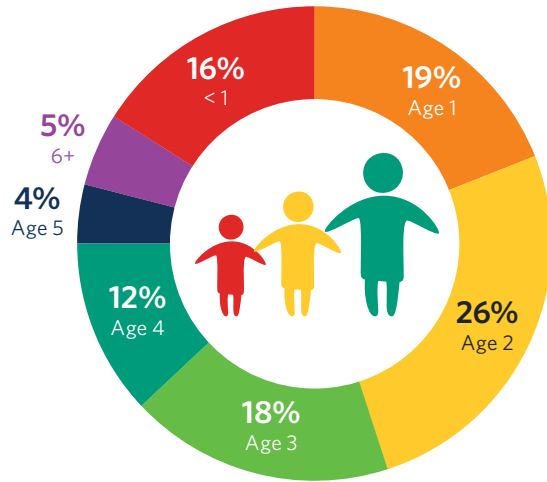


This has been a place my child has gained confidence.

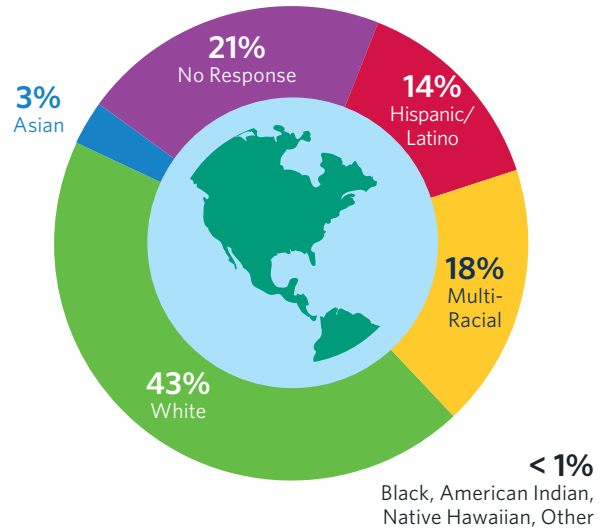


Participant Demographics

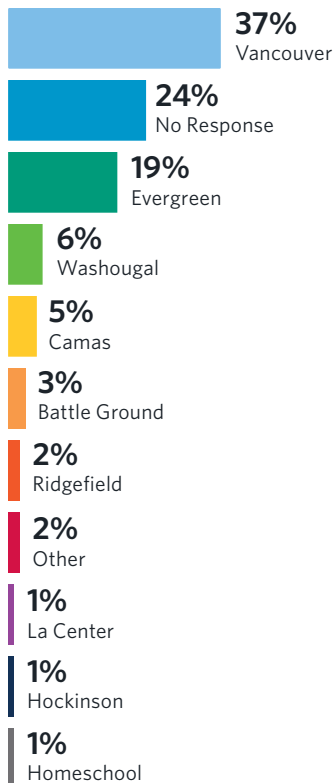
Age



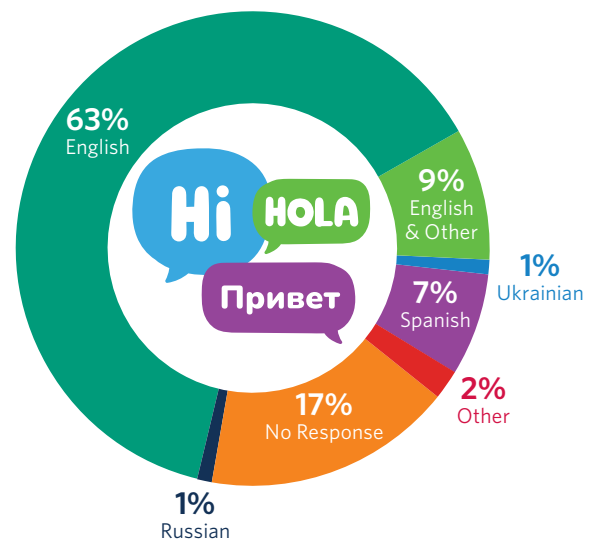
Ethnicity



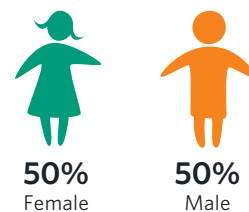
School District



Home Language



Gender



Child & Caregiver Survey 2024-25

Children who attended 1-2-3 Grow and Learn playgroups were observed, and caregivers were asked eight questions about their child(ren). They either marked 'increased' or 'same'. The caregivers (parents/guardians) were also surveyed about their own behaviors and feelings.



Skills Assessed

Q: Since attending 1-2-3 Grow and Learn, the child(ren) had an increase in these areas...

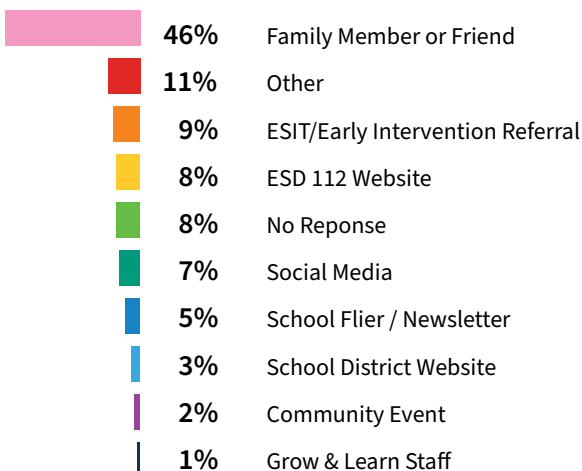
- | | |
|--|-----|
| 1. Is willing to play with others in group settings | 86% |
| 2. Tries different ways to solve problems | 88% |
| 3. Is able to smoothly transition between activities | 90% |
| 4. Is able to communicate their needs | 86% |
| 5. Is able to follow routines | 90% |
| 6. Uses calming strategies | 71% |
| 7. Shares with other children | 83% |
| 8. Is able to control impulses | 79% |

Caregivers Surveyed

Q: Since attending 1-2-3 Grow and Learn, caregivers had an increase in...

- | | |
|---|-----|
| 1. Understanding of the importance of playing with their child | 86% |
| 2. Strategies to redirect or manage their child's behavior | 81% |
| 3. Understanding of how to support their child's growth and development | 92% |
| 4. The amount of time they spent doing activities their child chooses | 83% |
| 5. Knowledge of child development | 89% |
| 6. Their confidence as a caregiver | 92% |
| 7. Connection to other families | 81% |
| 8. Knowledge to help their child prepare for school | 92% |
| 9. Knowledge about local resources and who to ask | 75% |

How did you hear about 1-2-3 Grow and Learn?



ASQ-3 Developmental Screenings

The Ages and Stages Questionnaires, Third Edition (ASQ-3), is a developmental screening tool that pinpoints developmental progress in children between the ages of one month to 5 ½ years.

Evidence shows that the earlier development is assessed, the greater the chance a child has to reach their potential.

104

screenings
completed

Over the last year we offered ASQ-3 screenings. In partnership with the caregivers, we **completed 104 screenings**.

26%

referral rate

Of those screenings completed, we **referred 27 children (26%)** to additional services through Early Support for Infants and Toddlers or through the child's home school district.



1-2-3 Grow and Learn Staff



JULIE JACOBSON
Program Coordinator



SHANA ARMSTRONG
Facilitator



ASHLIE CHAMBERLAIN
Facilitator

Caregiver comments about our amazing staff:

“ They are incredible with the kids. They have a true connection with each child. I trust them wholeheartedly with my child. ”

“ The team is amazing! I have been able to ask for advice and they have a wealth of knowledge. It also shows how much they care because they remember everyone. ”

“ They are great with the kids—super caring friendly and helpful. Engaging and help with one of my kids while I am busy with the other. ”

“ Very welcoming, friendly, and professional. ”

“ They really take the time to invest in kids' development. ”

“ Love the team, very knowledgeable and kind. ”



Connecting families to community resources, conducting developmental screenings, and promoting school readiness.



EDUCATIONAL SERVICE DISTRICT 112

For a current list of 1-2-3 Grow and Learn locations, scan the QR code or visit www.esd112.org/ece & click 1-2-3 Grow and Learn.



2500 NE 65th Ave., Vancouver, WA 98661 • esd112.org/ece • (360) 952-3466