

# ESD 112

## THERAPY/OFFICE TI



5305 E 18th St. VANCOUVER, WA 98661

ESD 112

THESYS	2026.04.27	DATE
PERMIT REVISIONS	2026.05.26	DATE
PERMIT SET	2026.04.27	DATE
MARK	DESCRIPTION	

APPROVAL	
SATISFACTORY DATE	
PRINT: 2026.04.30	
PROJECT NO.: 2026.00	

001 A0.0

### GENERAL PROJECT NOTES

- A. THESE DOCUMENTS AND NOTES ARE INTENDED TO BE SUPPLEMENTED BY AN OWNER/CONTRACTOR AGREEMENT. THE CONTRACTOR SHALL GUARANTEE ALL WORK AGAINST DEFECTS FOR THE LENGTH OF TIME SPECIFIED IN THE OWNER/CONTRACTOR AGREEMENT.
- B. THE GENERAL CONTRACTOR IS RESPONSIBLE FOR PROVIDING SUBCONTRACTORS WITH ALL INFORMATION IN REGARDS TO FULL SCOPE OF PROJECT AND THEIR RESPECTIVE TRADES.
- C. EVERY EFFORT HAS BEEN MADE TO ENSURE THESE DOCUMENTS ARE CONCISE AND COORDINATED. KEEP IN MIND THAT AN INDIVIDUAL SUBCONTRACTORS, TRADES, SUPPLIER'S OR MANUFACTURER'S SCOPE OF WORK MAY BE DEFINED IN VARIOUS PLACES THROUGH THESE AND OTHER DISCIPLINE'S DRAWINGS. THESE DRAWINGS ARE TO BE READ IN CONJUNCTION WITH THE DRAWINGS OF ALL OTHER DISCIPLINES AS WELL AS ALL SPECIFICATIONS AND CONTRACT DOCUMENTS TO UNDERSTAND THE FULL SCOPE OF WORK FOR THE PROJECT. ALL USERS OF THESE DRAWINGS SHOULD REVIEW THE DRAWINGS AND SPECIFICATIONS IN THEIR ENTIRETY.
- D. ALL WORK SHALL CONFORM TO APPLICABLE BUILDING CODES AND ORDINANCES. IN CASE OF ANY CONFLICT WHEREIN THE METHODS OR STANDARDS OF INSTALLATION OR THE MATERIALS SPECIFIED DO NOT EQUAL OR EXCEED THE REQUIREMENTS OF THE LAWS OR ORDINANCES, THE LAWS OR ORDINANCES SHALL GOVERN.
- E. CONFORM TO AGENCY INSPECTOR'S COMMENTS AND CORRECTIONS. NOTIFY THE ARCHITECT OF ALL CONFLICTS IMMEDIATELY AND BEFORE PROCEEDING, AND ESPECIALLY IF INSPECTOR REQUIREMENTS CHANGE OR ADD TO APPROVED PLANS AND CONTRACT DOCUMENTS.
- F. IT IS THE RESPONSIBILITY OF THE CONTRACTOR TO BECOME FULLY AWARE OF ANY AND ALL CONDITIONS RELATED TO THE SITE AND EXISTING BUILDING CONDITIONS THAT MAY AFFECT THE COST OR SCHEDULING OF CONSTRUCTION ACTIVITIES, PRIOR TO SUBMITTING A BID OR COMMENCING WORK.
- G. VERIFY ALL DIMENSIONS AND CONDITIONS AT THE JOB SITE, INCLUDING THOSE SHOWN ON ANY RECORD DRAWINGS PROVIDED, AND CONDITIONS RELATED TO THE LOCATION OF EXISTING UTILITIES AND SERVICES BEFORE COMMENCING WORK AND BE RESPONSIBLE FOR THE ABOVE. ALL DISCREPANCIES SHALL BE REPORTED TO THE ARCHITECT IMMEDIATELY.
- H. THE CONTRACTOR SHALL BE RESPONSIBLE FOR AND SHALL RESOLVE, AT NO COST TO THE OWNER AND TO THE SATISFACTION OF THE ARCHITECT, ANY AND ALL CONFLICTS BETWEEN THE WORK OF VARIOUS TRADES ARISING FROM ERRORS IN COORDINATION BETWEEN TRADES.
- I. DO NOT SCALE DRAWINGS OR DETAILS. USE GIVEN DIMENSIONS. CHECK DETAILS FOR LOCATION OF ALL ITEMS NOT DIMENSIONED ON PLANS.
- J. THE DRAWINGS INDICATE GENERAL AND TYPICAL DETAILS OF CONSTRUCTION. WHERE CONDITIONS ARE NOT SPECIFICALLY DETAILED BUT ARE OF SIMILAR CHARACTER TO OTHER DETAILS PROVIDED, SIMILAR DETAILS OF CONSTRUCTION SHALL BE USED, SUBJECT TO REVIEW AND APPROVAL BY THE ARCHITECT AND THE STRUCTURAL ENGINEER.
- K. BUILDING SYSTEMS AND COMPONENTS NOT SPECIFICALLY DETAILED SHALL BE INSTALLED IN ACCORDANCE WITH THE MANUFACTURER'S RECOMMENDATIONS. NOTIFY THE ARCHITECT OF ANY RESULTING CONFLICTS PRIOR TO COMMENCING WORK.
- L. COORDINATE ALL CONSTRUCTION LOGISTICS AND OPERATIONS SUCH AS MATERIAL STORAGE AREAS, ACCESS TO AND FROM WORK, AND TIMING OF WORK WITH THE ARCHITECT AND OWNER. THE GENERAL CONTRACTOR IS TO MAINTAIN AND PREVENT INTERFERENCE WITH EXISTING OCCUPIED AREAS AND ADJACENT PROPERTIES DURING CONSTRUCTION. HOURS OF OPERATION AND CONSTRUCTION ARE TO BE IN COMPLIANCE WITH LOCAL CODES AND ORDINANCES AND TO BE COORDINATED WITH THE OWNER. COORDINATE WITH OWNER FOR REQUIRED PARKING AND BUILDING ACCESS.
- M. INSTALL DUST BARRIERS, BARRICADES, GUARDS AND OTHER PROTECTION AS REQUIRED TO PROTECT INSTALLED FINISHES AND FACILITIES, AS WELL AS HUMAN SAFETY. THE CONTRACTOR SHALL BE RESPONSIBLE FOR ALL INJURY OF ANY KIND TO ALL PERSONS WHICH RESULTS FROM WORK ON OR RELATED TO THIS PROJECT.
- N. TAKE EVERY PRECAUTION TO PROTECT EXISTING PROPERTY FROM DAMAGE DUE DIRECTLY OR INDIRECTLY FROM THE CONTRACTOR'S WORK. CONTRACTOR SHALL BE RESPONSIBLE FOR ANY SUCH DAMAGE.
- O. ITEMS OR SYSTEMS INCLUDED IN THE CONSTRUCTION DOCUMENTS WHICH ARE TO BE "BIDDER DESIGNED" OR ARE PROVIDED BY OTHERS MUST BE SUBMITTED TO THE ARCHITECT AND ENGINEERS FOR REVIEW TO DETERMINE IF THE SUBMITTALS ARE IN CONFORMANCE WITH THE GENERAL DESIGN INTENT. THIS REVIEW DOES NOT RELIEVE THE CONTRACTOR OF THE RESPONSIBILITY TO CONFORM TO THE REQUIREMENTS OF ALL CODES AND THE CONSTRUCTION DOCUMENTS. THE CONTRACTOR SHALL COORDINATE THE PLACEMENT OF BIDDER DESIGNED ITEMS WITH THE STRUCTURAL SYSTEM AND FRAMING. CONFLICTS SHALL BE BROUGHT TO THE ARCHITECT'S ATTENTION PRIOR TO CONSTRUCTION OR INSTALLATION.
- P. THE GENERAL CONTRACTOR IS RESPONSIBLE FOR SECURING ANY ADDITIONAL PERMITS REQUIRED BY THE JURISDICTION FOR THE INSTALLATION OF ELECTRICAL, MECHANICAL OR SPECIALTY EQUIPMENT OR SYSTEMS AND FOR ANY PERMITS REGARDING HEALTH, ENVIRONMENTAL OR OTHER PROJECT OR JOB SITE SAFETY CONCERNS.
- Q. IT IS THE RESPONSIBILITY OF EACH CONTRACTOR TO CHECK WITH THE ARCHITECTURAL DRAWINGS BEFORE INSTALLATION OF THEIR WORK. ANY DISCREPANCY BETWEEN THE ARCHITECTURAL DRAWINGS AND THE CONSULTING ENGINEER(S) OR OTHER SUPPLEMENTARY DRAWINGS SHALL BE BROUGHT TO THE ARCHITECT'S ATTENTION BY WRITTEN NOTIFICATION FOR CLARIFICATION. ANY WORK INSTALLED IN CONFLICT WITH THE ARCHITECTURAL DRAWINGS SHALL BE CORRECTED BY THE CONTRACTOR AT HIS OWN EXPENSE AND AT NO EXPENSE TO THE OWNER OR ARCHITECT.
- R. PROVIDE TEMPORARY BRACING FOR STRUCTURE AND STRUCTURAL COMPONENTS UNTIL ALL FINAL CONNECTIONS HAVE BEEN COMPLETED.
- S. THE DRAWINGS AND DETAILS HAVE BEEN PREPARED USING SPECIFIC PRODUCTS OR MANUFACTURERS AS THE BASIS OF DESIGN. NAMES, DIMENSIONS OR DETAILS FROM THESE MANUFACTURERS MAY CHANGE BETWEEN DESIGN AND ACTUAL CONSTRUCTION OR INSTALLATION. EQUIVALENT PRODUCTS FROM OTHER MANUFACTURERS WHICH MEET WITH THE DESIGN INTENT AND THE REQUIREMENTS OF THE SPECIFICATIONS ARE ALSO ACCEPTABLE. THEREFORE, ACTUAL DIMENSIONS AND DETAILS MAY DIFFER FROM THOSE SHOWN. CONTRACTOR SHALL VERIFY INSTALLATION REQUIREMENTS FOR ALL PRODUCTS TO BE INCORPORATED INTO THE WORK AND IS RESPONSIBLE FOR SUBMITTING DISCREPANCIES AND SUBSTITUTIONS TO THE ARCHITECT AND FOR ACCOMMODATING AND COORDINATING DETAIL ALTERATIONS RESULTING FROM THESE CHANGES.
- T. THESE DRAWINGS ARE TO SHOW DESIGN INTENT ONLY. MEANS AND METHODS OF CONSTRUCTION ARE THE RESPONSIBILITY OF THE CONTRACTOR. ALL CLARIFICATIONS OF DESIGN INTENT ARE TO BE MADE IN WRITING TO THE ARCHITECT OR ENGINEERS RESPONSIBLE FOR THE DESIGN DRAWINGS.

### BUILDING "CONSTRUCTION" DATA

602.5 TYPE OF CONSTRUCTION: V-B  
903.2 FIRE PROTECTION: SPRINKLERED  
907 & NFPA 72 FIRE ALARM  
TABLE 906.3(1) TYPE 2-A EXTINGUISHERS LOCATED NOT MORE THAN 75' APART

304 OCCUPANCY: B (OFFICE), ACCESSORY OCCUPANCIES: A-2 (ASSEMBLY), S-1 (STORAGE)  
A SPACE USED FOR ASSEMBLY PURPOSES WITH AN OCCUPANT LOAD OF LESS THAN 50 PERSONS OR AREA LESS THAN 750 SQ. FT. SHALL BE CLASSIFIED AS AN ACCESSORY TO THE PRIMARY OCCUPANCY OF THAT BUILDING

504.3 BUILDING HEIGHT: 60' ALLOWED, EXISTING TO REMAIN: 24'

504.4 ALLOWED STORIES: 3-STORIES(B), A-2 & S-1 2 STORIES, EXISTING TO REMAIN: 2 STORIES

TABLE 506.2 ALLOWABLE BUILDING AREAS:  
B & S-1: SM 27,000 SF  
A-2: SM 18,000 SF

EXISTING BLDG: FIRST FLR: 17,762 SF, 2ND FLR: 7,909 SF  
COMPLIES WITHOUT FRONTAGE INCREASE CALCULATION.  
ALLOWABLE AREA ALLOWS FOR COMPLIANCE WITH 508.3 NON-SEPARATED OCCUPANCIES

TABLE 601:	PRIMARY STRUCTURAL FRAME BEARING WALLS	EXTERIOR	0 HOURS
	NON BEARING WALLS & PARTITIONS	INTERIOR	0 HOURS
	FLOOR CONSTRUCTION		0 HOURS
	ROOF CONSTRUCTION		0 HOURS

TABLE 602 FIRE SEPARATION:  
DISTANCE: NORTH: 0 HOURS SOUTH: 0 HOURS  
EAST: 0 HOURS WEST: 0 HOURS

### EGRESS REQUIREMENTS

TABLE 1006.2.1 NUMBER OF EXITS 1ST FLOOR: 2 REQUIRED, 2 PROVIDED

1008 ILLUMINATION: ALL OCCUPANCIES REQUIRE MEANS OF EGRESS ILLUMINATION UNDER NORMAL POWER. ILLUMINATION UNDER EMERGENCY POWER FOR A DURATION OF NOT LESS THAN 90 MINUTES (1008.3) REQUIRED & PROVIDED.

1009 TWO ACCESSIBLE MEANS OF EGRESS REQUIRED & PROVIDED.

TABLE 1017.2 EXIT ACCESS TRAVEL DISTANCE: 250' MAX (S-1), 300' MAX (B)

TABLE 1006.2.1 SPACES WITH ONE EXIT, COMMON PATH OF EGRESS TRAVEL DISTANCE: 100' MAX (B & S)

1007.1.1 TWO EXITS, SEPARATION OF EXIT ACCESS NOT LESS THAN 1/3 LENGTH OF THE MAX OVERALL DIM OF THE AREA SERVED.

1020.3 CORRIDOR WIDTH MIN 44", LESS THAN 50 OCC 36"  
1020.5 MAX ALLOWED DEAD END-CORRIDOR: 50'

### HAZARDOUS MATERIALS

NOT APPLICABLE

### MINIMUM NUMBER OF REQUIRED PLUMBING FIXTURES PER TABLE 2902.1

2902.2: OCCUPANT LOAD: 157  
HIGH LOW DRINKING FOUNTAIN PROVIDED  
EXISTING FIXTURES PROVIDED ADEQUATE.

FIXTURE	MALE 79		FEMALE 79		PROVIDED
	REQUIRED	REQUIRED	REQUIRED	REQUIRED	
WATER CLOSET 1 per 25 for first 50 and 1 per 50 for the remainder exceeding 50	(3)	(3)	(3)	(3)	5 NEWLY CONFIGURED SINGLE USER RESTROOMS + 1 EXISTING TO REMAIN.
LAV 1 per 40 for first 80 and 1 per 80 for the remainder exceeding 80	(3)	(3)	(3)	(3)	

### WATTS PER SF NOT TO EXCEED TABLE C405.4.2(2) VALUES & OCCUPANCY SENSORS PROVIDED PER C405.2.1.

### CURRENT GOVERNING CODES

2021 INTERNATIONAL EXISTING BUILDING CODE WITH WA STATE AMENDMENTS (WAC51-50-480000)  
2021 INTERNATIONAL BUILDING CODE WITH WA STATE AMENDMENTS (WAC51-50)  
2021 UNIFORM PLUMBING CODE AND STANDARDS WITH WA STATE AMENDMENTS (WAC51-56)  
2021 INTERNATIONAL MECHANICAL CODE WITH WA STATE AMENDMENTS (WAC 51-52)  
2023 NATIONAL ELECTRICAL CODE (NFPA70) WITH WA STATE AMENDMENTS  
2021 INTERNATIONAL FUEL GAS CODE WITH WA STATE AMENDMENTS (WAC51-52-21000)  
2021 INTERNATIONAL FIRE CODE WITH WA STATE AMENDMENTS (51-54)  
2021 WA STATE ENERGY CODE (WAC51-11C)  
ICC/ANSI A117.1-2017 ACCESSIBILITY (WAC 51-50-1101.2)  
ASCE/SEI 7-16 MINIMUM DESIGN LOADS & ASSOCIATED DESIGN CRITERIA

AUTHORITY HAVING JURISDICTION: CITY OF VANCOUVER  
PARCEL #: 29474000  
ZONE: LI LIGHT INDUSTRIAL

### SCOPE OF WORK

INTERIOR TENANT IMPROVEMENT IS NOT A CHANGE OF USE NOR A CHANGE IN SPACE CONDITIONING, DENTAL OFFICE EQUIPMENT AND INFRASTRUCTURE REMOVED, NEW WALLS AND RESTROOMS RECONFIGURED.  
REQUESTED EARLY START DUE TO THE LIMITED TIME BEFORE THE SCHOOL YEAR & SO THAT DEMOLITION OF INTERIOR WALLS & DENTAL OFFICE INFRASTRUCTURE COULD COMMENCE. THE THERAPY ROOMS ARE ENLARGED CLASSROOMS FOR CHILDREN WITH SPECIAL NEEDS. THE OCCUPANT LOAD IS BEING CALCULATED AT THE VOCATIONAL 50 NET RATE BECAUSE THIS IS SIMPLY A SPACE WHERE THEY CAN SPREAD OUT AND BE LESS OVERWHELMED BY THEIR ENVIRONMENT.

### DEFERRED SUBMITTALS SEPARATE PERMITS

STRUCTURAL FIRE SPRINKLER & ALARM

### LIST OF SHEETS

SHEET NUMBER	SHEET TITLE
GENERAL	
001 A0.0	COVER SHEET & CODE SUMMARY
002 A0.1	LIFE SAFETY PLAN AND ROOM SCHEDULE
003 A0.2	ADA ACCESSIBILITY RRs
004 A0.3	ADA ACCESSIBILITY
ARCHITECTURE	
005 A1.0	EXISTING/DEMO FLOOR PLAN
006 A1.0	EXISTING/DEMO FLOOR PLAN ENLARGED
007 A2.0	PROPOSED FLOOR PLAN AND ASSEMBLIES
008 A2.1	PROPOSED FLOOR PLAN ENLARGED
009 A2.2	PROPOSED ENLARGED FLOOR PLANS & DETAILS
010 A2.3	EXISTING/DEMO REFLECTED CEILING PLAN
011 A2.4	PROPOSED REFLECTED CEILING PLAN
012 A3.0	INTERIOR ELEVATIONS
013 A4.0	BUILDING SECTIONS
014 A500	DOOR SCHEDULE AND DETAILS

### STRUCTURAL

050 S1.1 STRUCTURAL COVERSHEET  
051 S2.1 STRUCTURAL WALL PLAN  
052 S3.1 STRUCTURAL DETAILS

### MECHANICAL

100 M001 COVERSHEET  
101 M101 ENLARGED MECHANICAL PLAN

### ELECTRICAL

200 E001 COVERSHEET ELECTRICAL  
201 E201D DEMO FLOOR PLAN  
202 E201 ELECTRICAL FLOOR PLAN  
203 E301D DEMO ELECTRICAL LIGHTING RCP  
204 E301 ELECTRICAL LIGHTING RCP

### PLUMBING

300 P001 COVERSHEET PLUMBING  
301 P002 SCHEDULES  
302 P101D DEMO FLOOR PLAN  
303 P102D DEMO ENLARGED FLOOR PLAN  
304 P200 UNDERFLOOR PLAN  
305 P201 FLOOR PLAN  
306 P202 FLOOR PLAN ENLARGED  
307 P501 DETAILS

TECHNOLOGY DEVICE ROUGH-IN SCHEDULE				
DEVICE	BACK BOX	MUD RING	CONDUIT	NOTES
TELECOM OUTLET	4"SQ, 2-1/8"D	1-GANG	1"	1
TV OUTLET	4"SQ, 2-1/8"D	1-GANG	1"	1
AV OUTLET	4-11/16"SQ	2-GANG	1-1/4"	1,2
SECURITY DEVICE	4"SQ, 2-1/8"D	1-GANG	3/4"	1,2

\*ALL ROUGH-INS ARE TYPICAL UNO ON PLANS

NOTES:  
 1. USE PLASTIC BUSHING AT CONDUIT TERMINATION IN ACCESSIBLE SPACE.  
 2. REFER TO ROUGH-IN DETAILS FOR MORE INFORMATION.  
 3. FOR DWELLING UNITS ONLY, PROVIDE CABLE RACEWAY TO ACCESSIBLE CEILING SPACE NOT REQUIRED.

TECHNOLOGY SYMBOLS LEGEND	
	TELECOMMUNICATIONS OUTLET, PROVIDE BACKBOX AND CONDUIT/PULL STRING TO ACCESSIBLE SPACE. (XX) = QUANTITY OF CABLES
	WIRELESS ACCESS POINT, PROVIDE BACKBOX AND CONDUIT/PULL STRING TO ACCESSIBLE SPACE.
	CABLE TV OUTLET, PROVIDE BACKBOX AND CONDUIT/PULL STRING TO ACCESSIBLE SPACE.
	AUDIO/VISUAL OUTLET, PROVIDE BACKBOX AND CONDUIT/PULL STRING TO ACCESSIBLE SPACE.
	SECURITY CAMERA

POWER DEVICE SYMBOLS LEGEND	
<b>COMMON DEVICES</b>	
	SIMPLEX RECEPTACLE
	DUPLEX RECEPTACLE
	QUADPLEX RECEPTACLE
	SPECIAL PURPOSE RECEPTACLE, VERIFY NEMA CONFIGURATION
	* INDICATES ABOVE COUNTER OR NON-STANDARD HEIGHT FOR ALL WALL DEVICES. REFER TO ARCHITECTURAL / INTERIOR ELEVATIONS FOR EXACT LOCATION, UNO.
	REMOTE GFCI DEVICE
	EQUIPMENT CONNECTION, SEE SCHEDULES
	MOTOR CONNECTION
	POWER DEVICE SWITCH, SEE PLANS FOR ADDITIONAL INFORMATION.
	DISCONNECT SWITCH
	DISCONNECT: F = FUSED, B = BREAKER
	JUNCTION BOX
	JUNCTION BOX WITH POWER OR DATA WHIP, SEE PLANS
	LINE VOLTAGE THERMOSTAT
<b>IN-CEILING DEVICES</b>	
	DUPLEX RECEPTACLE ON CEILING
	DOUBLE DUPLEX RECEPTACLE ON CEILING
	SPECIAL PURPOSE RECEPTACLE ON CEILING, VERIFY NEMA CONFIGURATION
<b>IN-FLOOR DEVICES</b>	
	DUPLEX FLOOR RECEPTACLE FB = FLOORBOX PT = POKE-THROUGH
	DUPLEX FLOOR RECEPTACLE FF = FURNITURE FEED
	COMBINATION FLOORBOX, REFER TO SCHEDULE FOR POWER, DATA, AND AV SCOPE
	NUMBER INDICATES SCHEDULED ENCLOSURE TYPE. REFER TO SCHEDULE FOR ADDITIONAL INFO.
<b>DEVICE TYPE / WIRING KEY</b>	
	CIRCUIT NUMBER
	DEVICE TYPE INDICATOR
	ABOVE COUNTER / NON-STANDARD HEIGHT
	SHADING INDICATES SWITCHING OR CONTROL, SEE PLANS
	CIRCUITING INDICATOR, MAY BE REPLACED WITH CIRCUIT NUMBER CALLOUT IN FINAL CONSTRUCTION DOCUMENTS.
<b>LETTER INDICATOR KEY</b>	
CIRCUITING:	DEVICE TYPE:
E = EMERGENCY	B = INTEGRAL USB
U = UPS	G = GFCI
S = STANDBY	W = WEATHER PROOF GFCI
C = CRITICAL	T = ISOLATED GND
D = DED. CKT	

GENERAL SYMBOLS	
	KEYNOTE
	REVISION TAG
	REVISION CLOUD
	DETAIL/PLAN CALLOUT
	NORTH ARROW
	MATCHLINE
	CONTINUATION SYMBOL

ELECTRICAL TAGS	
	MECHANICAL EQUIPMENT TAG, EQUIP. SPECIFIED BY DIV 21, 22, OR 23.
	BUILDING EQUIPMENT TAG, EQUIP. NOT SPECIFIED BY DIV 21, 22, OR 23.
	DWELLING UNIT CALLOUT TAG W/ UNIT TYPE AND CIRCUIT NUMBER
	DWELLING UNIT CIRCUIT TAG

ONE-LINE SYMBOLS LEGEND	
	CIRCUIT BREAKER
	BUS DUCT PLUG-IN CIRCUIT BREAKER
	FUSED SWITCH
	CURRENT TRANSFORMERS
	GROUND CONNECTION
	CONDUIT CONTINUATION
	CONDUIT CAP
	FEEDER CALLOUT
	SURGE PROTECTIVE DEVICE
	AUTOMATIC TRANSFER SWITCH
	TRANSFORMER
	ELECTRICITY METER
	GENERATOR

LIGHTING SYMBOLS LEGEND	
NOTE: SHADED LUMINAIRE INDICATES EMERGENCY POWER	
	RECESSED DOWNLIGHT - ROUND/SQUARE
	SURFACE DOWNLIGHT - ROUND/SQUARE
	PENDANT OR FLUSH MOUNT LUMINAIRE
	LINEAR RECESSED LUMINAIRE
	LINEAR SURFACE LUMINAIRE
	LINEAR PENDANT LUMINAIRE
	LINEAR WALL LUMINAIRE
	LINEAR STRIP LUMINAIRE
	CONTINUOUS TAPE OR UNDERCABINET LUMINAIRE
	RECESSED HEAT LAMP
	RECESSED 2x2 LUMINAIRE
	RECESSED 2x4 LUMINAIRE
	SURFACE OR PENDANT 2x2 LUMINAIRE
	SURFACE OR PENDANT 2x4 LUMINAIRE
	WALL MOUNTED LUMINAIRE
	RECESSED STEP LIGHT
	GROUND MOUNT FLOOD
	POLE MOUNTED AREA LUMINAIRE
	BOLLARD OR POST TOP LUMINAIRE
	EMERGENCY BUGEYE
	EXIT SIGN, SHADING INDICATES FACES, ARROWS PER PLAN
TYPICAL LUMINAIRE LABELING	
	LUMINAIRE TYPE
	PANEL & CIRCUIT
	SWITCH INDICATOR

LIGHTING CONTROLS SYMBOLS LEGEND	
NOTE: ANY COMBINATION OF LETTERS MAY APPLY TO A SWITCH FOR MULTIPLE FUNCTIONS	
	STANDARD SWITCH
	STANDARD SWITCH W/ SWITCHING SUBSCRIPT
	3-WAY SWITCH
	4-WAY SWITCH
	LOW VOLTAGE SWITCH
	LOW VOLTAGE SWITCH PER SCHEDULE
	OCCUPANCY SENSOR SWITCH
	KEYED SWITCH
	DIMMER SWITCH
	TIMER SWITCH
	OCCUPANCY SENSOR CEILING MOUNT
	PHOTOCELL CEILING MOUNT
	OCCUPANCY SENSOR WALL MOUNT
	PHOTOCELL WALL MOUNT

ABBREVIATIONS	
A	AMPERES
AFCI	ARC FAULT CIRCUIT INTERRUPTER
AFF	ABOVE FINISHED FLOOR
AIC	AMPERE INTERRUPTING CAPACITY
AL	ALUMINUM
ATS	AUTOMATIC TRANSFER SWITCH
AWG	AMERICAN WIRE GAUGE
AV	AUDIO VISUAL
BKR	BREAKER
C	CONDUIT
CKT	CIRCUIT
CO	CONDUIT ONLY
CU	COPPER
CLG	CEILING
CT	CURRENT TRANSFORMER
DAS	DISTRIBUTED ANTENNA SYSTEM
DA	DIAMETER
(E)	EXISTING
EGC	EQUIPMENT GROUNDING CONDUCTOR
ERRCS	EMERGENCY RESPONDER RADIO COVERAGE
F	FUSE
FACP	FIRE ALARM CONTROL PANEL
FC	FOOT CANDLE
FLA	FULL LOAD AMPERES
FSD	FIRE SMOKE DAMPER
FTL	FEED-THRU LUGS
GEC	GROUNDING ELECTRODE CONDUCTOR
GFCI	GROUND FAULT CIRCUIT INTERRUPTER
GFPE	GROUND FAULT PROTECTION OF EQUIPMENT
GND	GROUND
HP	HORSEPOWER
IDF	INTERMEDIATE DISTRIBUTION FRAME
IG	ISOLATED GROUND
KCMIL	THOUSAND CIRCULAR MIL
KVA	KILOVOLT-AMP
KW	KILOWATT
LTG	LIGHTING
MCA	MINIMUM CIRCUIT AMPERES
MCB	MAIN CIRCUIT BREAKER
MCC	MOTOR CONTROL CENTER
MDF	MAIN DISTRIBUTION FRAME
MDP	MAIN DISTRIBUTION PANEL
MDU	MEDIA DISTRIBUTION UNIT
MIN	MINIMUM
MLO	MAIN LUG ONLY
MOCPP	MAXIMUM OVERCURRENT PROTECTION
MTS	MANUAL TRANSFER SWITCH
(N)	NEW
NAC	NOTIFICATION APPLIANCE CIRCUIT
OC	ON CENTER
P	POLE
PH	PHASE
PNL	PANEL
PWR	POWER
(R)	RELOCATE
ROW	RIGHT-OF-WAY
S	SWITCH
SDP	SUB-DISTRIBUTION PANEL
SIM	SIMILAR
SPD	SURGE PROTECTIVE DEVICE
TR	TAMPER RESISTANT
TYP	TYPICAL
UNO	UNLESS NOTED OTHERWISE
UPS	UNINTERRUPTIBLE POWER SUPPLY
V	VOLTS
VA	VOLT-AMPERES
VFD	VARIABLE FREQUENCY DRIVE
W	WIRE
WP	WEATHERPROOF
(X)	DEMOLISH
XFMR	TRANSFORMER

TYPICAL DEVICE MOUNTING HEIGHTS	
RECEPTACLES	+18" AFF
RECEPTACLES, ABOVE COUNTER	+6" ABOVE COUNTER, +46" AFF MAX. COORDINATE WITH
CASEWORK	+18" AFF
PHONE/DATA/CATV OUTLET	+46" AFF
SWITCHES	+46" AFF
THERMOSTATS	+46" AFF
CARD READERS	+46" AFF
PANELBOARDS	+72" TO TOP OR PER NEC 404.8
RESIDENTIAL PANEL	+48" TO HIGHEST OPERABLE CONTROL
CONTROL PANELS	+72" TO TOP

EQUIPMENT SYMBOLS LEGEND	
	UTILITY METER
	EQUIPMENT CABINET AS NOTED
	ELECTRIC WALL HEATER
	BRANCH PANEL RECESSED
	BRANCH PANEL SURFACE
	TRANSFORMER
	EQUIPMENT ENCLOSURE, SEE PLAN NOTES AND NAMING CONVENTIONS FOR DESCRIPTION

ELECTRICAL GENERAL NOTES	
<b>GENERAL SCOPE AND INTENT</b>	
1. THESE DRAWINGS ARE INTENDED FOR PERMIT REVIEW ONLY AND ARE NOT INTENDED TO BE USED FOR BIDDING OR CONSTRUCTION. ANY USE OF THESE DRAWINGS FOR PURPOSES OTHER THAN PERMIT REVIEW SHALL BE THE RESPONSIBILITY OF THE USER. REFER TO THE OWNER FOR INFORMATION REGARDING BIDDING AND CONSTRUCTION DOCUMENTS.	
2. DRAWINGS ARE PERMIT-LEVEL ONLY AND ARE NOT INTENDED TO REPRESENT COMPLETE CONSTRUCTION DOCUMENTS OR DETAILED INSTALLATION REQUIREMENTS.	
3. DESIGN IS BASED ON ASSUMED EXISTING CONDITIONS. NO FIELD VERIFICATION OR COMPLETE RECORD DRAWINGS WERE AVAILABLE AT THE TIME OF DESIGN.	
4. EXISTING ELECTRICAL DISTRIBUTION SYSTEM SHALL REMAIN. NO SERVICE OR MAJOR DISTRIBUTION EQUIPMENT REPLACEMENT IS INCLUDED IN THIS SCOPE UNLESS NOTED OTHERWISE.	
5. EXISTING SYSTEMS ARE ASSUMED TO HAVE ADEQUATE CAPACITY BASED ON PRIOR CALCULATIONS AND REDUCTION OF LOAD.	
6. DRAWINGS DEFINE REQUIRED PERFORMANCE CRITERIA. MEANS AND METHODS ARE THE RESPONSIBILITY OF THE CONTRACTOR.	
<b>EXISTING CONDITIONS &amp; FIELD VERIFICATION</b>	
1. EXISTING CIRCUITING, PANELBOARD ASSIGNMENTS, AND DEVICE FEEDS ARE NOT FULLY DOCUMENTED.	
2. CONTRACTOR SHALL FIELD VERIFY ALL EXISTING ELECTRICAL SYSTEMS SERVING AREAS OF WORK PRIOR TO CONSTRUCTION.	
3. REPORT DISCREPANCIES, CONFLICTS, OR UNSUITABLE CONDITIONS PRIOR TO PROCEEDING.	
4. COORDINATE WORK WITH FIELD CONDITIONS AND EXISTING CONSTRUCTION.	
<b>LIGHTING SYSTEMS</b>	
1. LIGHTING LAYOUTS ARE SCHEMATIC AND BASED ON ARCHITECTURAL ROOM CONFIGURATIONS.	
2. REUSE EXISTING CIRCUITS WHERE FEASIBLE AND EXTEND OR MODIFY AS REQUIRED TO SERVE NEW LIGHTING LAYOUT.	
3. CONTRACTOR SHALL PROVIDE ALL REQUIRED WIRING, BOXES, SUPPORTS, CONNECTORS, AND ACCESSORIES FOR COMPLETE INSTALLATION.	
4. MAINTAIN REQUIRED LIGHTING LEVELS AND CODE COMPLIANCE.	
<b>LIGHTING CONTROLS</b>	
1. PROVIDE OCCUPANCY SENSOR LIGHTING CONTROLS IN REQUIRED SPACES PER CURRENT ENERGY CODE.	
2. CONTROL DEVICES SHOWN ARE DIAGRAMMATIC. FINAL LOCATIONS SHALL BE COORDINATED WITH FIELD CONDITIONS AND ROOM USE.	
3. CONTRACTOR SHALL PROVIDE LOW VOLTAGE CABLING, POWER PACKS, RELAYS, AND ACCESSORIES REQUIRED FOR COMPLETE OPERATION.	
4. VERIFY COMPATIBILITY OF NEW CONTROLS WITH NEW AND EXISTING LIGHTING EQUIPMENT.	
<b>RECEPTACLES &amp; POWER DEVICES</b>	
1. RECEPTACLE LOCATIONS ARE BASED ON CURRENT ROOM LAYOUTS AND MAY REQUIRE MINOR FIELD ADJUSTMENTS.	
2. REUSE EXISTING BRANCH CIRCUITS WHERE FEASIBLE AND EXTEND TO NEW DEVICE LOCATIONS AS REQUIRED.	
3. CONTRACTOR SHALL TRACE EXISTING CIRCUITS PRIOR TO MODIFICATION OR RECONNECTION.	
4. PROVIDE NEW DEVICES, BOXES, CONDUCTORS, AND RACEWAYS AS REQUIRED FOR COMPLETE INSTALLATION.	
5. MAINTAIN REQUIRED RECEPTACLE SPACING, ACCESSIBILITY, AND CODE COMPLIANCE.	
<b>DEMOLITION &amp; PHASING</b>	
1. REMOVE EXISTING ELECTRICAL EQUIPMENT, DEVICES, AND WIRING AS REQUIRED FOR NEW WORK.	
2. ABANDONED WIRING SHALL BE REMOVED BACK TO SOURCE WHERE ACCESSIBLE.	
3. COORDINATE OUTAGES WITH OWNER AND MAINTAIN BUILDING OPERATIONS DURING CONSTRUCTION.	
4. TEMPORARY POWER, TEMPORARY LIGHTING, AND PHASING REQUIRED TO MAINTAIN OPERATIONS SHALL BE PROVIDED BY CONTRACTOR.	
<b>CODE COMPLIANCE</b>	
1. COMPLY WITH NEC, WASHINGTON STATE AMENDMENTS, AND ALL APPLICABLE LOCAL CODES.	
2. MOST STRINGENT REQUIREMENT SHALL GOVERN.	
<b>COORDINATION</b>	
1. COORDINATE WORK WITH ARCHITECTURAL, MECHANICAL, AND OTHER TRADES.	
2. ADJUST DEVICE LOCATIONS AS REQUIRED TO SUIT FINAL CASEWORK, DOORS, FINISHES, AND FIELD CONDITIONS.	
3. PATCH AND REPAIR SURFACES DISTURBED BY ELECTRICAL WORK TO MATCH ADJACENT FINISHES.	

GENERAL PROJECT NOTES	
1. COMPLETED INSTALLATION SHALL COMPLY WITH NEC AND ALL LOCAL LAWS, ORDINANCES, AND REGULATIONS.	
2. PLANS ARE DIAGRAMMATIC IN NATURE TO COMMUNICATE SCOPE OF WORK AND GENERAL INTENT. CONTRACTOR SHALL PROVIDE ALL FITTINGS, BOXES, AND APPURTENANCES NECESSARY FOR A COMPLETE AND OPERABLE ELECTRICAL SYSTEM.	
3. DEVICE LOCATIONS ON PLANS MAY NOT BE EXACT. REFER TO ARCHITECTURAL PLANS FOR MORE DETAILED INFORMATION REGARDING DIMENSIONS AND LAYOUTS. COORDINATE ALL DEVICE AND EQUIPMENT LOCATIONS WITH ARCHITECTURAL AND OTHER TRADES.	
4. EQUIPMENT FOR OTHER DISCIPLINES MAY BE SHOWN FOR REFERENCE ONLY. REFER TO OTHER DISCIPLINES' DRAWINGS FOR MORE DETAIL REGARDING EQUIPMENT SPECIFICATIONS AND INFORMATION.	
5. WIRE SIZE AND QUANTITIES ARE NOT GENERALLY INDICATED ON PLANS. FOR A TYPICAL 20A/1P CIRCUIT BREAKER, PROVIDE (3) #12 CU CONDUCTORS (PHASE, PHASE, GROUND). FOR A TYPICAL 20A/2P CIRCUIT BREAKER, PROVIDE (4) #12 CU CONDUCTORS (THREE PHASES PLUS GROUND).	
6. TO COMPENSATE FOR VOLTAGE DROP, ON 20A, 120V CIRCUITS: OVER 100 FEET, PROVIDE #10 AWG. OVER 150 FEET, PROVIDE #8 AWG. ON 20A, 277V CIRCUITS: OVER 250 FEET, PROVIDE #10 AWG.	
7. PROVIDE FIRE STOPPING FOR ALL PENETRATIONS OF FIRE RATED ASSEMBLIES. FIRE PROOFING MUST BE EQUIVALENT OR HIGHER TO THAT OF THE PENETRATED ASSEMBLY. REFER TO ARCHITECTURAL PLANS.	
8. REFER TO ARCHITECTURAL PLANS FOR FIRE RATED ASSEMBLIES. MAINTAIN 24" SEPARATION BETWEEN DEVICES IN FIRE-RATED WALLS. PROVIDE FIRE-RATED BOXES OR "PUTTY PADS" AS REQUIRED TO MAINTAIN FIRE RATING.	
9. ALL CONDUIT ROUTING SHALL FOLLOW BUILDING LINES WHERE POSSIBLE. COORDINATE ROUTING WITH ARCHITECTURAL ELEMENTS. ALL ROUTING OF EXPOSED CONDUITS SHALL BE APPROVED BY THE ARCHITECT.	
10. ALL LIFE SAFETY WIRING SHALL BE READILY IDENTIFIED AS SUCH AND SHALL BE ROUTED ENTIRELY INDEPENDENTLY OF NORMAL WIRING.	
11. LIGHTING CONTROL - PLANS ARE DIAGRAMMATIC TO SHOW GENERAL INTENT. ALL LIGHTING CONTROL DEVICES MAY NOT BE SHOWN ON THE PLANS. REFER TO LIGHTING CONTROL NARRATIVE FOR DETAILED INFORMATION REGARDING FUNCTIONALITY.	
12. COORDINATE UNDERGROUND CONDUIT ROUTING WITH CIVIL AND STRUCTURAL PLANS.	
13. CONSULT STRUCTURAL ENGINEER OF RECORD FOR ALL STRUCTURAL PENETRATIONS.	
*NOTE: ALL OF GENERAL NOTES ON THIS SHEET ARE TO BE APPLIED TO ALL OTHER DRAWINGS IN THIS SET. THE SYMBOLS AND ABBREVIATIONS SHOWN ON THIS SHEET MAY OR MAY NOT BE USED IN THIS SET OF DRAWINGS.	

ELECTRICAL SHEET LIST	
E001	COVER SHEET - ELECTRICAL
E201D	DEMO FLOOR PLAN ENLARGED - ELECTRICAL
E201	FLOOR PLAN ENLARGED - ELECTRICAL
E301D	DEMO LIGHTING RCP - ELECTRICAL
E301	LIGHTING RCP - ELECTRICAL

5305 e 18th St. VANCOUVER, WA 98661

ESD 112

THERAPY/OFFICE TI

COVER SHEET

Mj Architecture & Code Consulting, PLLC  
 2618 S. 10th Ct.  
 Ridgefield, WA 98642  
 PH: 920-334-5023

20155615  
 REGISTERED PROFESSIONAL ENGINEER  
 06/02/26  
 SEAL

DATE	DESCRIPTION
2026.04.27	PERMIT SET

APPROVAL

SATISFACTORY DATE

PRINT:

PROJECT NO.: 25468

E001

**WINDSOR**  
 ENGINEERS  
 Duluth | Minneapolis | Ridgefield | Portland  
 windsorengineers.com

6/2/2026 3:31:11 PM E201D  
Autodesk Docs/25468 ESD 112 Renovations/MEP26 ESD 112 - 5305 E 18th St.rvt

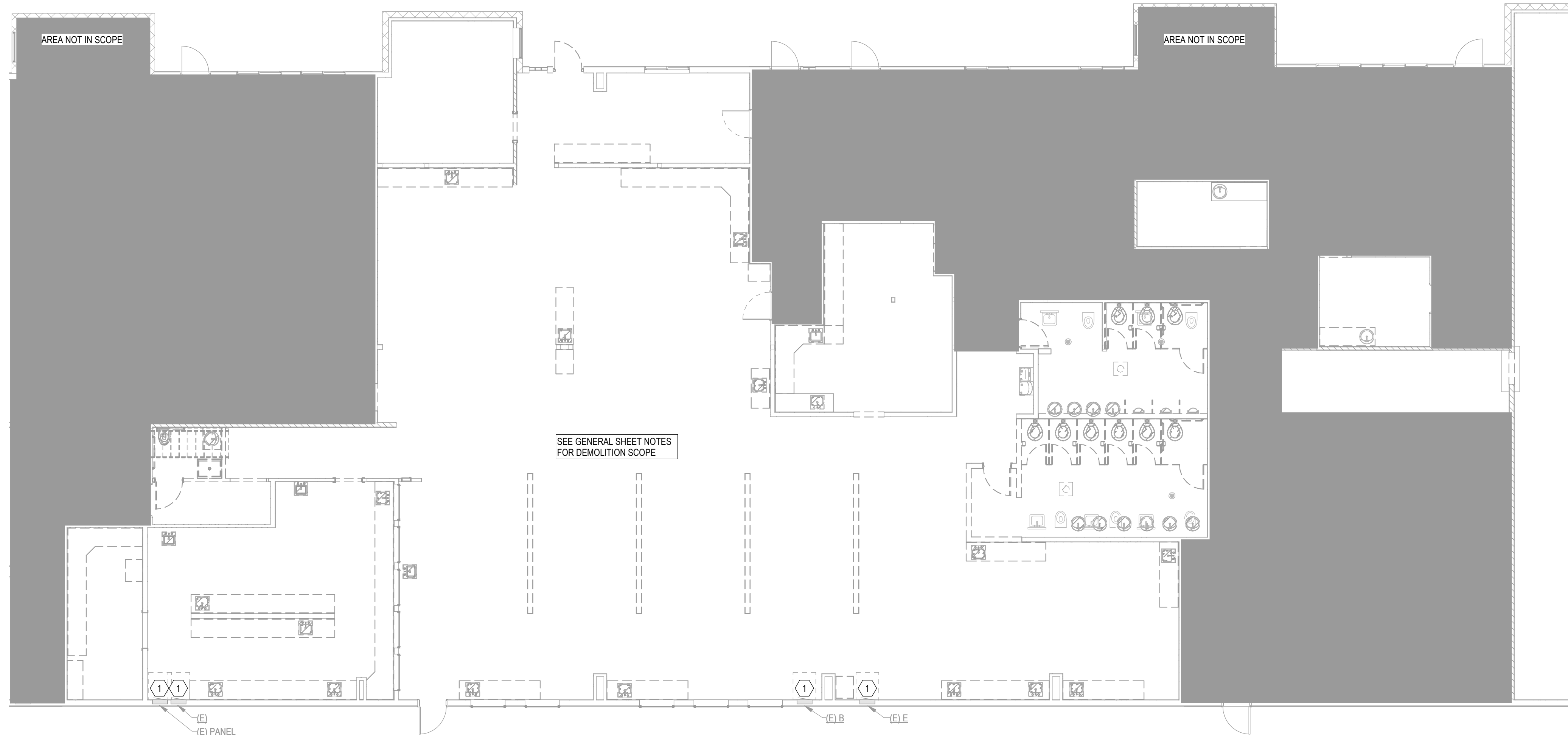
D  
C  
B  
A

1

2

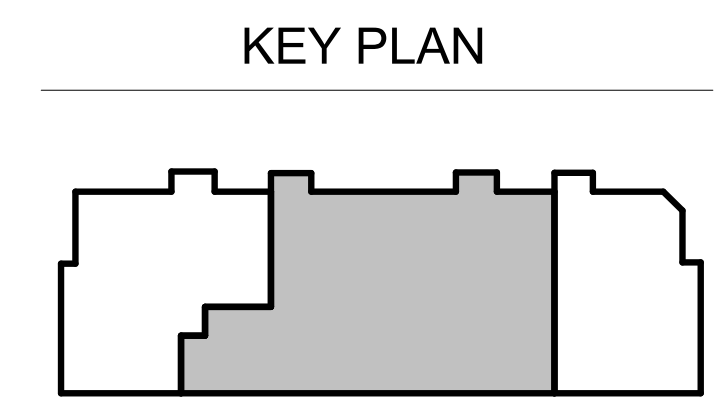
3

4



1 DEMO FLOOR PLAN - ENLARGED - POWER  
SCALE: 1/8" = 1'-0"

- GENERAL ELECTRICAL DEMO NOTES**
- A. EQUIPMENT, LIGHTING, AND POWER DEVICES ARE SHOWN FOR GENERAL DEMOLITION INTENT AND ARE BASED ON AS-BUILT DOCUMENTATION OR FIELD OBSERVATION. VERIFY ALL EXISTING FIELD CONDITIONS AND IMPACTS TO EXISTING TO REMAIN SYSTEMS PRIOR TO WORK.
  - B. EQUIPMENT, LIGHTING, AND POWER DEVICES SHOWN IN BOLD ARE EXISTING TO BE DEMOLISHED. LINEWORK AND EQUIPMENT SHOWN SCREENED BACK IS EXISTING TO REMAIN, UNLESS NOTED OTHERWISE.
  - C. ALL ELECTRICAL DEVICES MOUNTED ON WALLS TO BE DEMOLISHED SHALL BE REMOVED. ALL ASSOCIATED CONDUITS AND WIRING WITHIN THESE DEMOLISHED WALLS SHALL BE REMOVED BACK TO THE NEAREST ACCESSIBLE OPEN CEILING SPACE. CONDUITS AND CIRCUITS SHALL BE PROPERLY TERMINATED AND CAPPED ABOVE THE CEILING FOR FUTURE USE.
  - D. ALL ELECTRICAL DEVICES MOUNTED ON WALLS TO REMAIN SHALL BE REMOVED. ALL ASSOCIATED CONDUITS AND WIRING WITHIN THESE WALLS SHALL BE REMOVED BACK TO THE NEAREST ACCESSIBLE OPEN CEILING SPACE. CONDUITS AND CIRCUITS SHALL BE PROPERLY TERMINATED AND CAPPED ABOVE THE CEILING FOR FUTURE USE.
- KEYNOTES**
- 1 EXISTING PANELS TO REMAIN. PANEL COVERS TO BE REMOVED AND REPLACED WITH LOCKABLE COVERS.



MJ Architecture & Code Consulting, PLLC  
2618 S. 10th Ct.  
Ridgfield, WA 98642  
PH: 920-334-5023



5305 e 18th St. VANCOUVER, WA 98661

ESD 112  
THERAPY/OFFICE TI  
DEMO FLOOR PLAN ENLARGED

MARK	DESCRIPTION	DATE
	PERMIT SET	2026.04.27

APPROVAL  
SATISFACTORY DATE  
PRINT:  
PROJECT NO.: 25468

E201D

D  
C  
B  
A

1

2

3

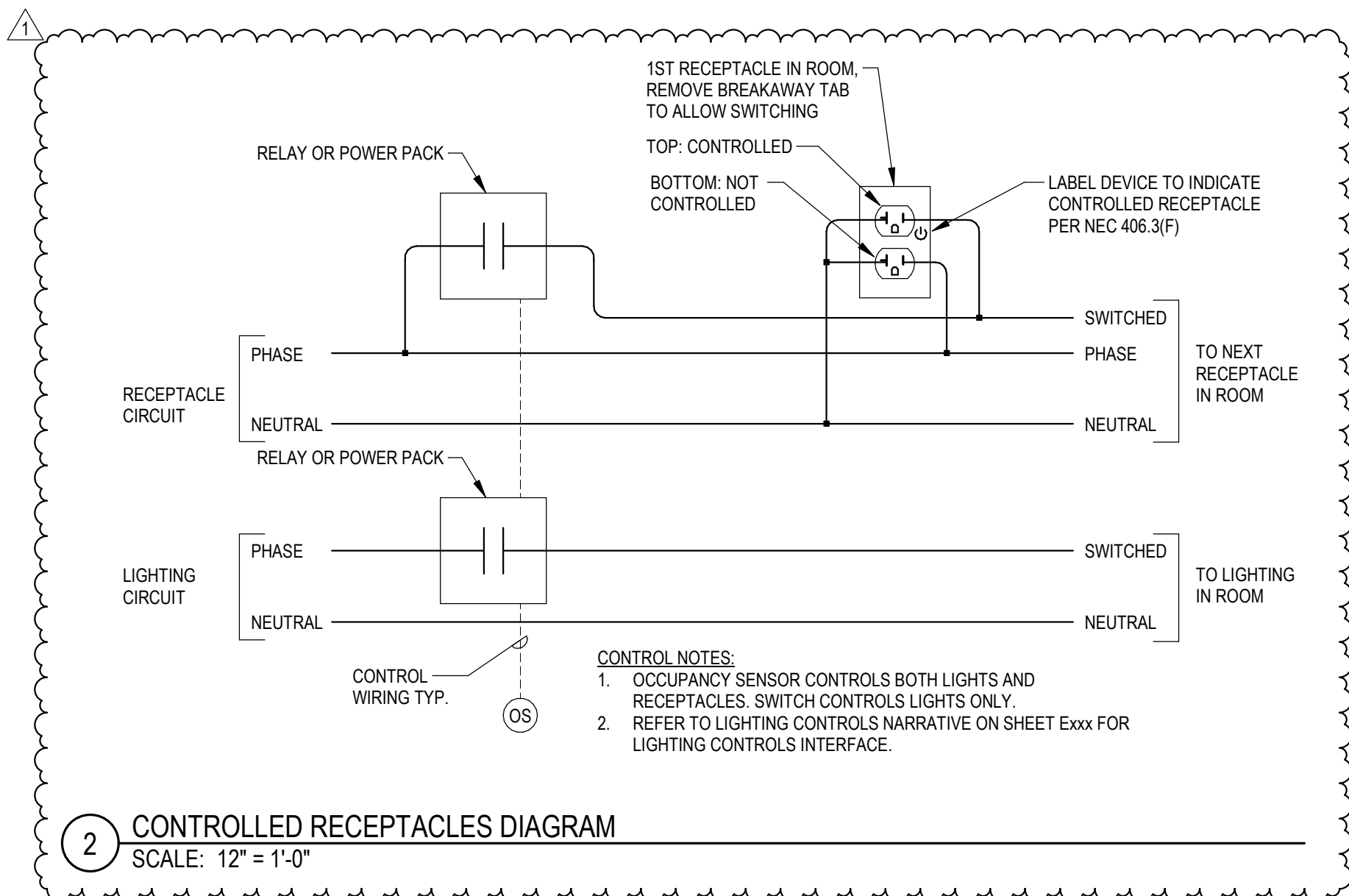
4

D

C

B

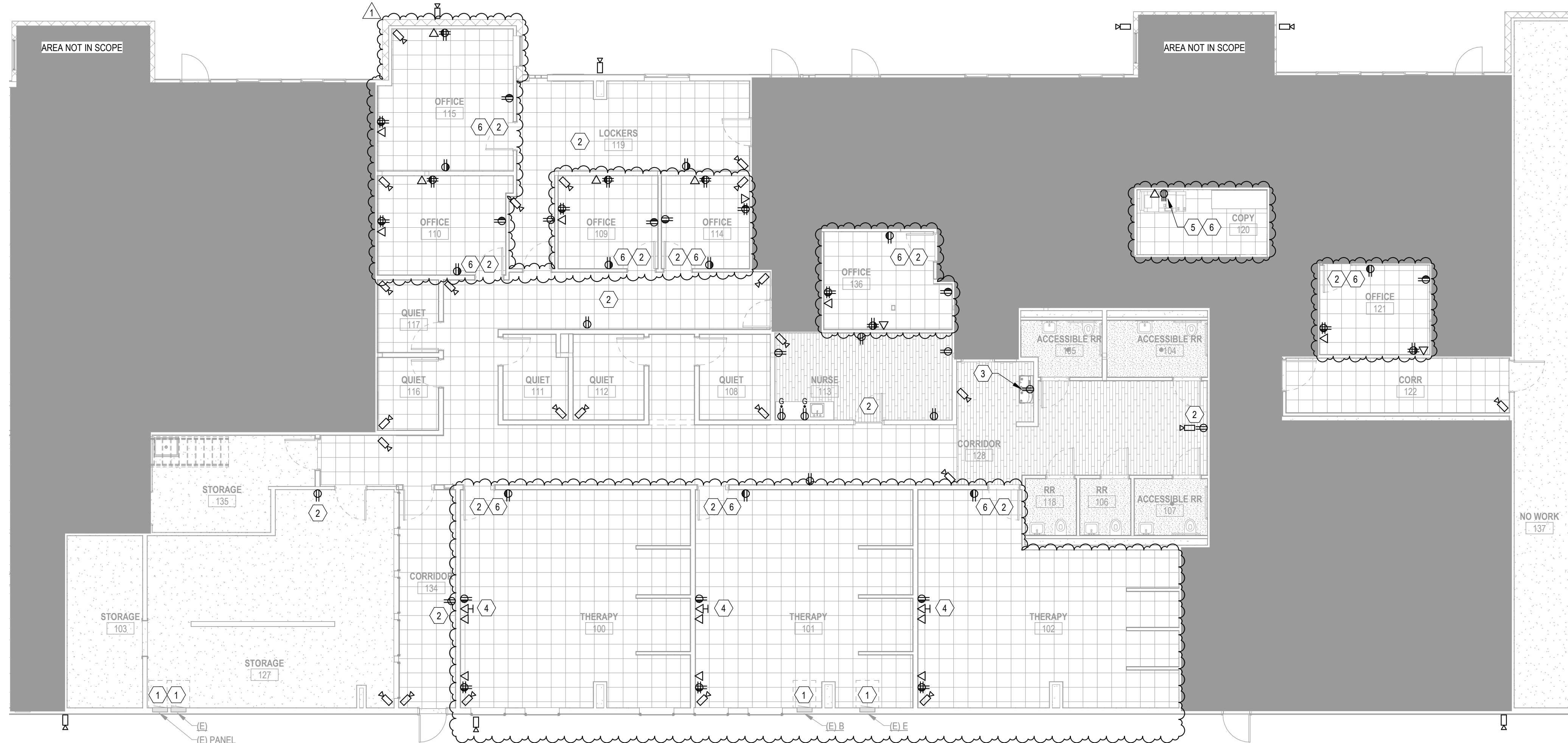
A



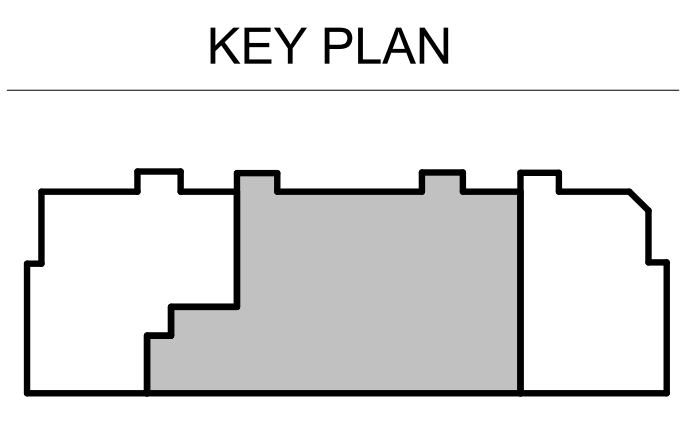
2 CONTROLLED RECEPTACLES DIAGRAM

- GENERAL POWER NOTES:**
- A. DRAWINGS ARE DIAGRAMMATIC TO CONVEY DESIGN INTENT AND SHALL NOT BE USED FOR EXACT DIMENSIONS, UNLESS DIMENSIONS ARE PROVIDED.
  - B. ROUTE ALL NEW WIRING CONDUITS CONCEALED INSIDE WALLS OR ABOVE CEILINGS. ALL CONDUIT ROUTING SHALL FOLLOW BUILDING LINES WHERE POSSIBLE AND BE FULLY CONCEALED, EXCLUDING BACK-OF-HOUSE SPACES. COORDINATE ALL EXPOSED CONDUIT ROUTING WITH ARCHITECT PRIOR TO INSTALL.
  - C. PROVIDE 1" CONDUIT ROUTED TO ACCESSIBLE CEILING SPACE FOR ALL DATA OUTLETS SHOWN IN PLANS. MAINTAIN AT LEAST 12" SEPARATION BETWEEN POWER AND COMMUNICATIONS WIRING ROUTED PARALLEL. SMALLER SEPARATION MAY BE ALLOWED WHEN CROSSING.
  - D. LINEWORK AND EQUIPMENT SHOWN IN BOLD IS NEW SCOPE OF WORK. LINEWORK AND EQUIPMENT SHOWN SCREENED BACK IS EXISTING TO REMAIN, UNLESS NOTED OTHERWISE.
  - E. PLANS INDICATE NEW DEVICE LOCATIONS REQUESTED BY OWNER AND ARE NOT A COMPLETE DOCUMENTATION OF ALL EXISTING DEVICES. EXISTING RECEPTACLES MAY REMAIN AND BE UTILIZED WHERE THEIR LOCATIONS REASONABLY ALIGN WITH INTENDED NEW DEVICE LOCATIONS. CONTRACTOR SHALL COORDINATE FINAL DEVICE LOCATIONS WITH OWNER AND FIELD CONDITIONS PRIOR TO INSTALLATION.
  - F. LOW VOLTAGE DEVICE LOCATIONS SHOWN ON PLANS ARE BASED ON OWNER DIRECTION AND ARE DIAGRAMMATIC ONLY. PROVIDE COMPLETE ROUGH-IN, BACKBOXES, PATHWAYS, SUPPORTS, AND CATEGORY 6A (QTY. 2) CABLING TO EACH DEVICE LOCATION SHOWN. FINAL SYSTEM DESIGN, EQUIPMENT SELECTION, TERMINATIONS, PROGRAMMING, TESTING, AND COORDINATION WITH EXISTING NETWORK, SECURITY, OR CAMERA SYSTEMS SHALL BE BY CONTRACTOR AND/OR LOW VOLTAGE VENDOR.

- KEYNOTES**
- 1. PROVIDE (E) PANEL WITH LOCKABLE COVER. FIELD VERIFY EXACT REQUIREMENTS PRIOR TO INSTALLATION.
  - 2. NEW RECEPTACLES SHOWN ON PLANS SHALL BE CONNECTED TO EXISTING BRANCH CIRCUITS SERVING THE AREA WHERE FEASIBLE. UNLESS FIELD CONDITIONS DICTATE OTHERWISE, DESIGN INTENT ASSUMES NO MORE THAN FOUR (4) NEW 180VA GENERAL-USE RECEPTACLES SHALL BE ADDED TO ANY ONE EXISTING 20A CIRCUIT. CONTRACTOR SHALL FIELD VERIFY CIRCUIT CAPACITY AND CODE COMPLIANCE PRIOR TO CONNECTION.
  - 3. PROVIDE POWER TO DRINKING FOUNTAIN. PROVIDE 120V, 1PH, 20A DEDICATED CIRCUIT. CONNECT TO NEAREST EXISTING AVAILABLE CIRCUIT. PROVIDE GFCI PROTECTION AT THE BREAKER
  - 4. PROVIDE POWER AND DATA FOR WALL MOUNTED TELEVISION. COORDINATE EXACT LOCATION AND MOUNTING HEIGHT WITH ARCHITECT PRIOR TO ROUGH-IN.
  - 5. PROVIDE POWER TO OFFICE COPIER/PRINTER. PROVIDE 120V, 1PH, 1500W. COORDINATE EXACT LOCATION AND REQUIREMENTS PRIOR TO ROUGH-IN.
  - 6. RECEPTACLES IN ROOM ARE AUTOMATICALLY CONTROLLED PER WSEC C405. REFER TO CONTROLLED RECEPTACLE DETAIL ON SHEET E201 FOR MORE INFORMATION.



1 FLOOR PLAN - ENLARGED - POWER



**Mj Architecture & Code Consulting, PLLC**  
2618 S. 10th Ct.  
Ridgfield, WA 98642  
PH: 920-334-5023



5305 e 18th St. VANCOUVER, WA 98661

ESD 112

MARK	PERMIT SET	DATE
1	PERMIT SET	2008/04/27

APPROVAL
SATISFACTORY DATE
PRINT:
PROJECT NO: 25468

E201

THERAPY/OFFICE T1 FLOOR PLAN ENLARGED

6/2/2026 3:31:11 PM E201 Autodesk Docs/25468 ESD 112 Renovations/MEP26 ESD 112 - 5305 E 18th St.rvt

6/2/2026 3:31:13 PM E301D  
Autodesk Docs//25468 ESD 112 Renovations/MEP26 ESD 112 - 5305 E 18th St.rvt

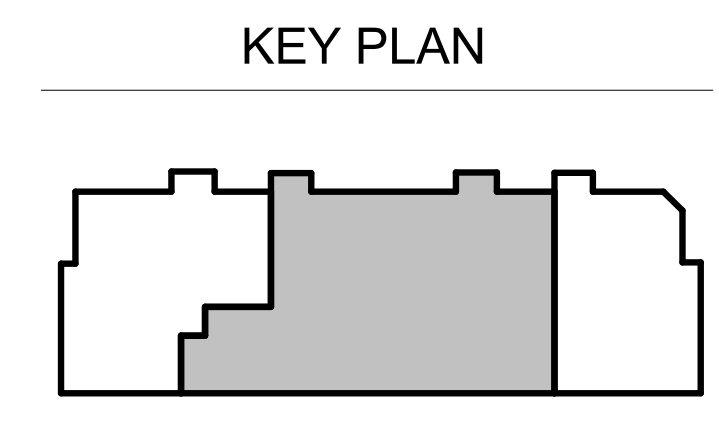
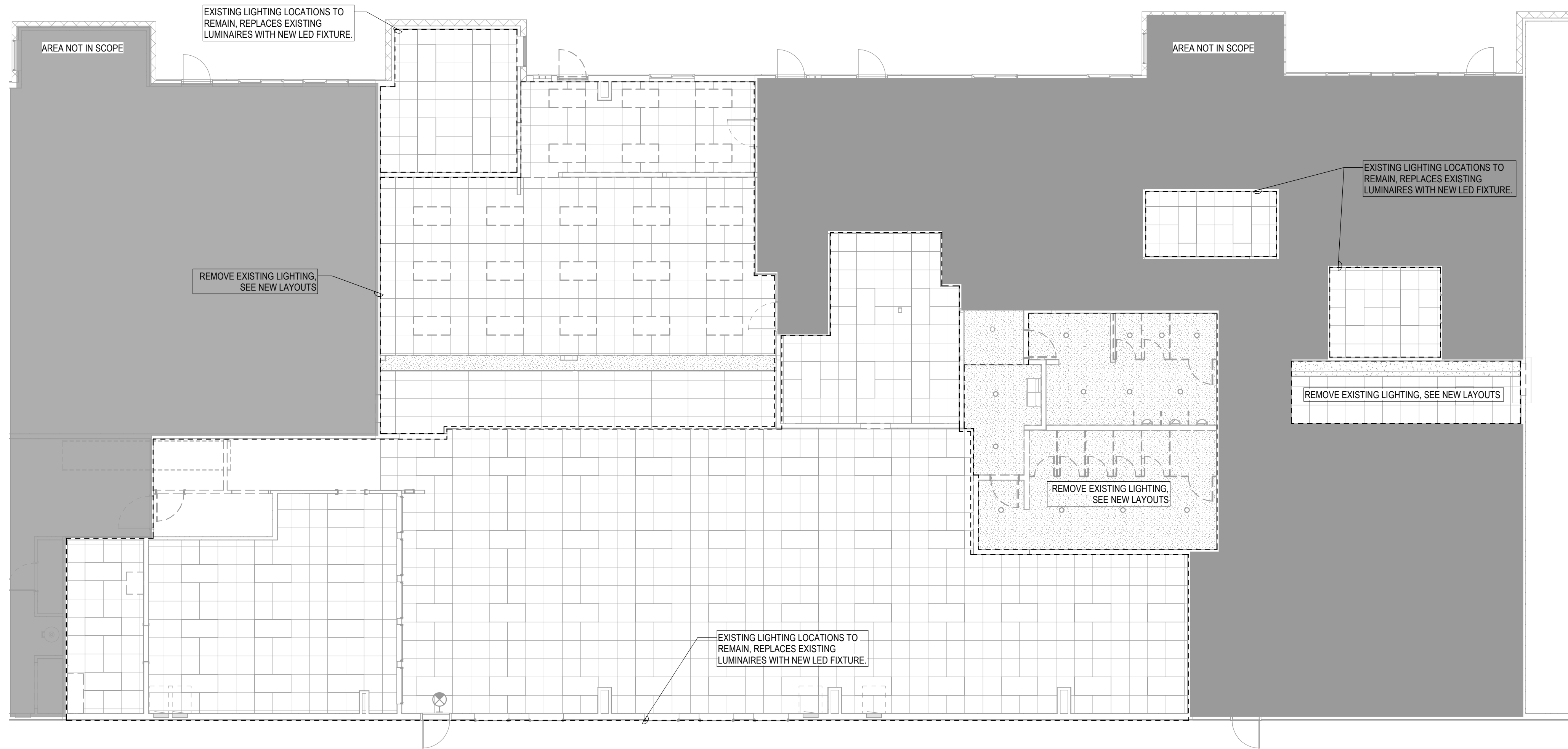
D  
C  
B  
A

1

2

3

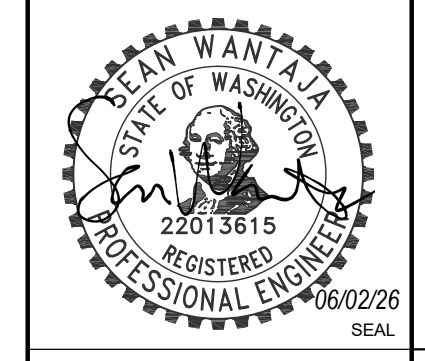
4



1 DEMO CEILING PLAN - ENLARGED - LIGHTING  
SCALE: 1/8" = 1'-0"

- GENERAL LIGHTING NOTES:**
- A. DRAWINGS ARE DIAGRAMMATIC TO CONVEY DESIGN INTENT AND SHALL NOT BE USED FOR EXACT DIMENSIONS, UNLESS DIMENSIONS ARE PROVIDED.
  - B. REFER TO INTERIORS AND ARCHITECTURAL DESIGN PLANS FOR EXACT DIMENSIONS AND INSTALLATION DETAILS OF ALL LUMINAIRES AND DEVICES IN FRONT-OF-HOUSE SPACES.
  - C. LINEWORK AND EQUIPMENT SHOWN IN BOLD IS NEW SCOPE OF WORK. LINEWORK AND EQUIPMENT SHOWN SCREENED BACK IS EXISTING TO REMAIN, UNLESS NOTED OTHERWISE.
  - D. LIGHTING CIRCUITING IS NOT SHOWN ON PLANS. CONNECT NEW AND RELOCATED LIGHTING FIXTURES TO EXISTING LIGHTING CIRCUITS SERVING THE AREA WHERE FEASIBLE. MODIFY, EXTEND, RECONFIGURE, AND RE-CIRCUIT EXISTING LIGHTING AS REQUIRED TO ACCOMMODATE NEW ROOM LAYOUTS, SWITCHING, OCCUPANCY SENSOR CONTROLS, AND CODE COMPLIANCE. PROVIDE ALL REQUIRED CONDUCTORS, RACEWAYS, BOXES, AND ASSOCIATED WORK FOR A COMPLETE OPERATING SYSTEM.
  - E. FOR EMERGENCY LIGHTING FIXTURES WITH A SELF-CONTAINED BACKUP BATTERY POWER SOURCE, CONNECT THE FIXTURE TO THE SAME BRANCH CIRCUIT AS THAT SERVING THE NORMAL LIGHTING IN THE AREA AND PROVIDE AN UNSWITCHED PHASE WIRE IN ADDITION TO THE SWITCHED WIRE. THE BRANCH CIRCUIT SHALL BE CLEARLY IDENTIFIED AT THE DISTRIBUTION PANEL.
  - F. FOR EXIT SIGNS, PROVIDE AN UNSWITCHED PHASE WIRE OF THE SAME BRANCH CIRCUIT AS THAT SERVING THE EMERGENCY LIGHTING IN THE AREA.
  - G. WATTS PER SQUARE FOOT NOT TO EXCEED TABLE C405.4.2(2) VALUES AND OCCUPANCY SENSORS PROVIDED PER C405.2.1.

**Mj Architecture & Code Consulting, PLLC**  
2618 S. 10th Ct.  
Ridgfield, WA 98642  
PH: 920-334-5023



5305 e 18th St. VANCOUVER, WA 98661

ESD 112  
THERAPY/OFFICE TI  
DEMO LIGHTING RCP

MARK	DESCRIPTION	DATE
	PERMIT SET	2026.04.27

APPROVAL  
SATISFACTORY DATE  
PRINT:  
PROJECT NO.: 25468



E301D

1

2

3

4

5

LUMINAIRE SCHEDULE

GENERAL LUMINAIRE SCHEDULE NOTES:

- A. REFER TO SPECIFICATIONS SECTIONS 26 5100 AND 26 56 00 FOR ADDITIONAL REQUIREMENTS.
- B. FINISH FOR ALL LUMINAIRES LISTED ABOVE SHALL BE PER ARCHITECT AND INTERIOR DESIGNER.
- C. LUMEN OUTPUT LISTED IS DELIVERED LUMENS.
- D. MOUNTING HEIGHTS:
  - a. CONFIRM MOUNTING HEIGHTS FOR WALL MOUNTED AND SUSPENDED LUMINAIRES WITH ARCHITECT AND INTERIOR DESIGNER.
  - b. WALL MOUNTED LUMINAIRES: UNLESS NOTED OTHERWISE, SPECIFIED MOUNTING HEIGHTS ARE TO CENTER OF LUMINAIRE FROM FINISHED FLOOR.
  - c. SUSPENDED LUMINAIRES: UNLESS NOTED OTHERWISE, SPECIFIED MOUNTING HEIGHTS ARE TO BOTTOM OF LUMINAIRE FROM FINISHED FLOOR.

LUMINAIRE NOTES:

- 1. NOTE NOT USED.

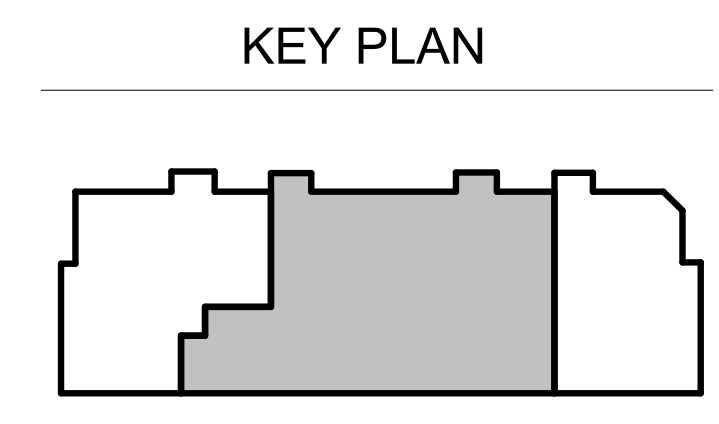
TAG	LUMINAIRE DESCRIPTION	MOUNTING	MOUNTING HEIGHT	LAMP	COLOR TEMP	LUMEN OUTPUT	POWER SUPPLY	MANUFACTURER & MODEL	VOLTAGE	INPUT WATTS	NOTES
L1	4' STRIP LIGHT, ROUND DIFFUSE LENS	SURFACE	N/A	LED	3500K	4,000	INTEGRAL ELECTRONIC DRIVER	LITHONIA CLX SERIES OR APPROVED	120 V	26 W	
L2	8' STRIP LIGHT, ROUND DIFFUSE LENS	SURFACE	N/A	LED	3500K	6,000	INTEGRAL ELECTRONIC DRIVER	LITHONIA CLX SERIES OR APPROVED	120 V	37 W	
L2E	8' STRIP LIGHT, ROUND DIFFUSE LENS	SURFACE	N/A	LED	3500K	6,000	INTEGRAL ELECTRONIC DRIVER	LITHONIA CLX SERIES OR APPROVED	120 V	37 W	
R1	2' x 4' RECESSED TROFFER, SMOOTH DIFFUSED LENS	RECESSED	N/A	LED	3500K	6,083	INTEGRAL ELECTRONIC DRIVER, 0-10V DIMMING	LITHONIA BLT SERIES OR APPROVED	120 V	47 W	
R1E	2' x 4' RECESSED TROFFER, SMOOTH DIFFUSED LENS, BATTERY BACKUP	RECESSED	N/A	LED	3500K	6,083	INTEGRAL ELECTRONIC DRIVER, 0-10V DIMMING	LITHONIA BLT SERIES OR APPROVED	120 V	47 W	
R2	2' x 2' RECESSED TROFFER, SMOOTH DIFFUSED LENS	RECESSED	N/A	LED	3500K	5,159	INTEGRAL ELECTRONIC DRIVER, 0-10V DIMMING	LITHONIA BLT SERIES OR APPROVED	120 V	42 W	
R3	4" RECESSED DOWNLIGHT	RECESSED	N/A	LED	3500K	1,500	INTEGRAL ELECTRONIC DRIVER	LITHONIA LDN4 SERIES OR APPROVED	120 V	20 W	
R3E	4" RECESSED DOWNLIGHT, BATTERY BACKUP	RECESSED	N/A	LED	3500K	1,500	INTEGRAL ELECTRONIC DRIVER	LITHONIA LDN4 SERIES OR APPROVED	120 V	20 W	
W1E	WALL PACK AREA LIGHT, FORWARD THROW DISTRIBUTION, BATTERY BACKUP	WALL	+8'-0" AFF U.N.O.	LED	3000K	4,500	INTEGRAL ELECTRONIC DRIVER	LITHONIA WDG1 SERIES OR APPROVED	120 V	35 W	
X1	THERMOPLASTIC EXIT SIGN, SINGLE FACE, BATTERY BACKUP	WALL, PENDANT, CEILING	+8'-0" AFF U.N.O.	LED	RED	-	INTEGRAL ELECTRONIC DRIVER	LITHONIA LQM SERIES OR APPROVED	120 V	5 W	
X2	THERMOPLASTIC EXIT SIGN, DUAL FACE, BATTERY BACKUP	WALL, PENDANT, CEILING	+8'-0" AFF U.N.O.	LED	RED	-	INTEGRAL ELECTRONIC DRIVER	LITHONIA LQM SERIES OR APPROVED	120 V	5 W	

GENERAL LIGHTING NOTES:

- A. DRAWINGS ARE DIAGRAMMATIC TO CONVEY DESIGN INTENT AND SHALL NOT BE USED FOR EXACT DIMENSIONS, UNLESS DIMENSIONS ARE PROVIDED.
- B. REFER TO INTERIORS AND ARCHITECTURAL DESIGN PLANS FOR EXACT DIMENSIONS AND INSTALLATION DETAILS OF ALL LUMINAIRES AND DEVICES IN FRONT-OF-HOUSE SPACES.
- C. LINEWORK AND EQUIPMENT SHOWN IN BOLD IS NEW SCOPE OF WORK. LINEWORK AND EQUIPMENT SHOWN SCREENED BACK IS EXISTING TO REMAIN, UNLESS NOTED OTHERWISE.
- D. LIGHTING CIRCUITING IS NOT SHOWN ON PLANS. CONNECT NEW AND RELOCATED LIGHTING FIXTURES TO EXISTING LIGHTING CIRCUITS SERVING THE AREA WHERE FEASIBLE. MODIFY, EXTEND, RECONFIGURE, AND RE-CIRCUIT EXISTING LIGHTING AS REQUIRED TO ACCOMMODATE NEW ROOM LAYOUTS, SWITCHING, OCCUPANCY SENSOR CONTROLS, AND CODE COMPLIANCE. PROVIDE ALL REQUIRED CONDUCTORS, RACEWAYS, BOXES, AND ASSOCIATED WORK FOR A COMPLETE OPERATING SYSTEM.
- E. FOR EMERGENCY LIGHTING FIXTURES WITH A SELF-CONTAINED BACKUP BATTERY POWER SOURCE, CONNECT THE FIXTURE TO THE SAME BRANCH CIRCUIT AS THAT SERVING THE NORMAL LIGHTING IN THE AREA AND PROVIDE AN UNSWITCHED PHASE WIRE IN ADDITION TO THE SWITCHED WIRE. THE BRANCH CIRCUIT SHALL BE CLEARLY IDENTIFIED AT THE DISTRIBUTION PANEL.
- F. FOR EXIT SIGNS, PROVIDE AN UNSWITCHED PHASE WIRE OF THE SAME BRANCH CIRCUIT AS THAT SERVING THE EMERGENCY LIGHTING IN THE AREA.
- G. WATTS PER SQUARE FOOT NOT TO EXCEED TABLE C405.4.2(2) VALUES AND OCCUPANCY SENSORS PROVIDED PER C405.2.1.

KEYNOTES

- 1. PROVIDE 3-WAY SWITCHING CONTROLS FOR HALLWAY LIGHTING, COORDINATE EXACT LOCATION PRIOR TO ROUGH-IN



1 CEILING PLAN - ENLARGED - LIGHTING  
SCALE: 1/8" = 1'-0"

5305 e 18th St. VANCOUVER, WA 98661

ESD 112

THERAPY/OFFICE TI

LIGHTING RCP

MARK	PERMIT SET DESCRIPTION	DATE
1	PERMIT SET	2008.04.27

APPROVAL  
SATISFACTORY DATE  
PRINT:  
PROJECT NO.: 25468

E301



M. J. Architecture & Code Consulting, PLLC  
2618 S. 10th Ct.  
Ridgfield, WA 98642  
PH: 920-334-5023

6/2/2026 3:31:14 PM E301 Autodesk Docs://25468 ESD 112 Renovations/MEP26 ESD 112 - 5305 E 18th St.rvt