



**DEMOLITION PLAN LEGEND**

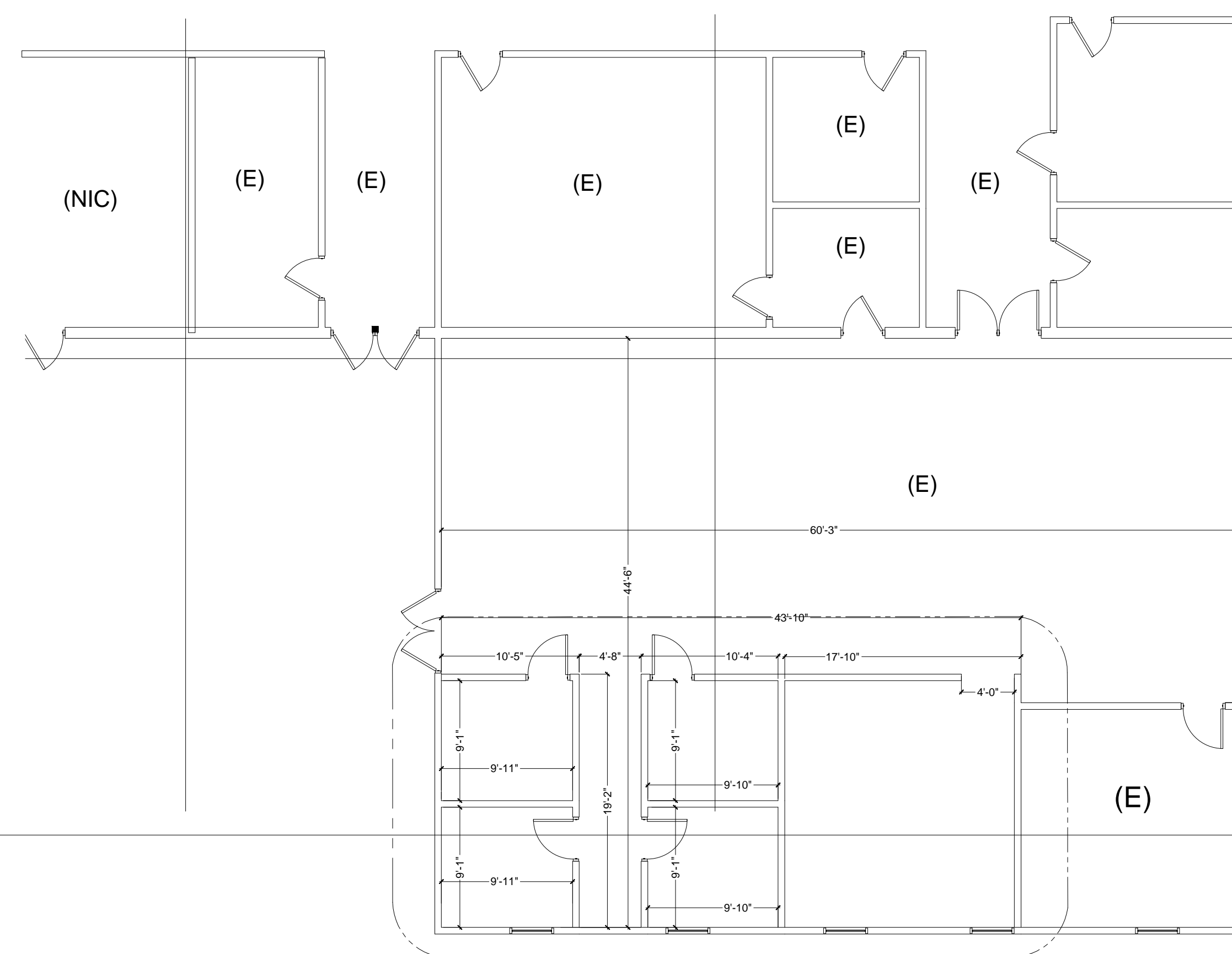
- (NIC) NOT IN CONTRACT
- (D) DEMOLISH
- (E) EXISTING

**Floor Plan - North Portion Demolition Plan**

scale: 1/8" = 1' = 0"

**KEYNOTES - DEMOLITION PLAN**

- 1 DEMO WALL, T.O. OPENING TO BE 5'-6" x 7'-0"
- 2 REMOVE AND DISPOSE DEBRIS
- 3 REMOVE NORTH AND SOUTH ADJACENT DOORS - COVER UP WITH 5/8" GYP. BD. AND MATCH ALL SURFACE TEXTURES AND COLORS.



**Floor Plan - South Portion Communications Room No Demolition Required**

scale: 1/8" = 1' = 0"

DATE	DESCRIPTION

12.06.21  
PM: Jeffery Grimes  
Demolition Plan North & South Areas