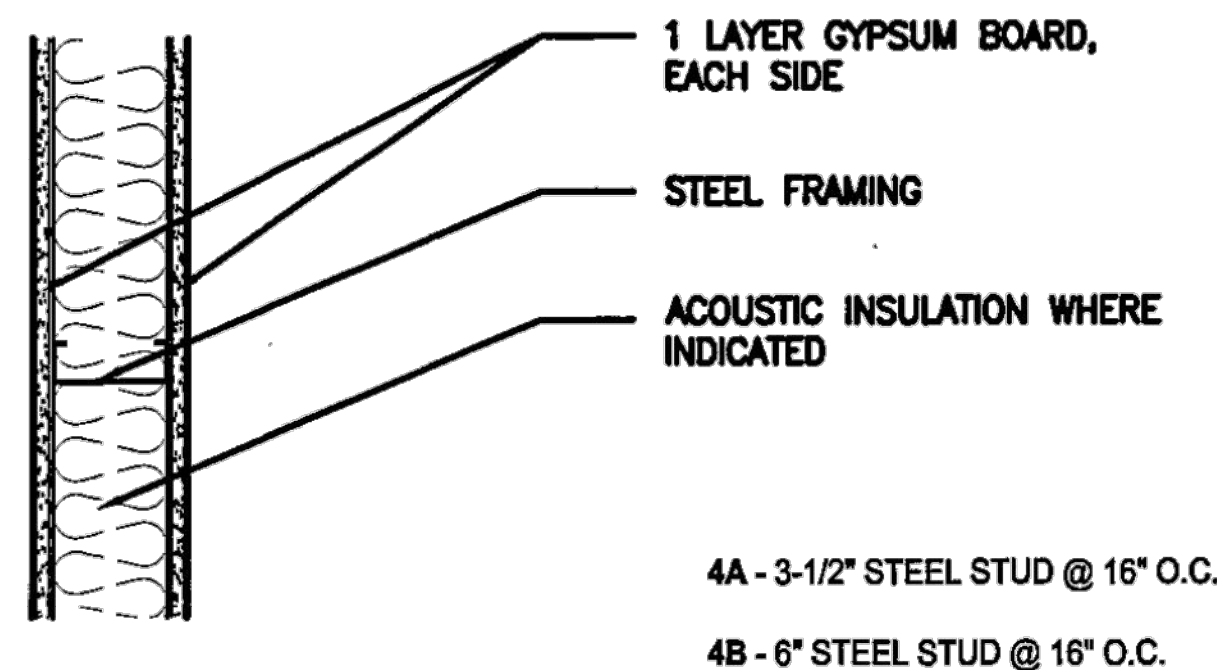


1. VALUES FOR COMPOSITE SECTION REQUIRES MINIMUM 1/2 INCH THICK GYPSUM BOARD ON BOTH SIDES WITH #6 TYPE S DRYWALL SCREWS SPACED AT 12" OC MAX FOR STUDS AT 24" SPACING AND 16" OC MAX FOR STUDS AT 16" SPACING.
2. HEIGHT LIMITS ARE LESS WHERE GYPSUM BOARD IS ON ONE SIDE. PROVIDE BLOCKING OR STRAPPING ON OPPOSITE SIDE AND USE NON-COMPOSITE BRACED AT 48" OC SECTION VALUES

CEILING WIRE ATTACHMENT	
CONSTRUCTION TYPE	FASTENER
WOOD	1/4" x 3" SCREW EYES
STEEL DECK	PRE-DROP WIRES, CMI DC 1 OR DC 2-1/4" METAL DECK SCREW EYES.
POST TENSION CONCRETE	PRE-DROP WIRES, EMBEDS, 1/4" x 3/4" METAL HIT ANCHORS.
POURED IN PLACE CONCRETE	PRE-DROP WIRES, EMBEDS, 1/4" x 3/4" METAL HIT ANCHORS.

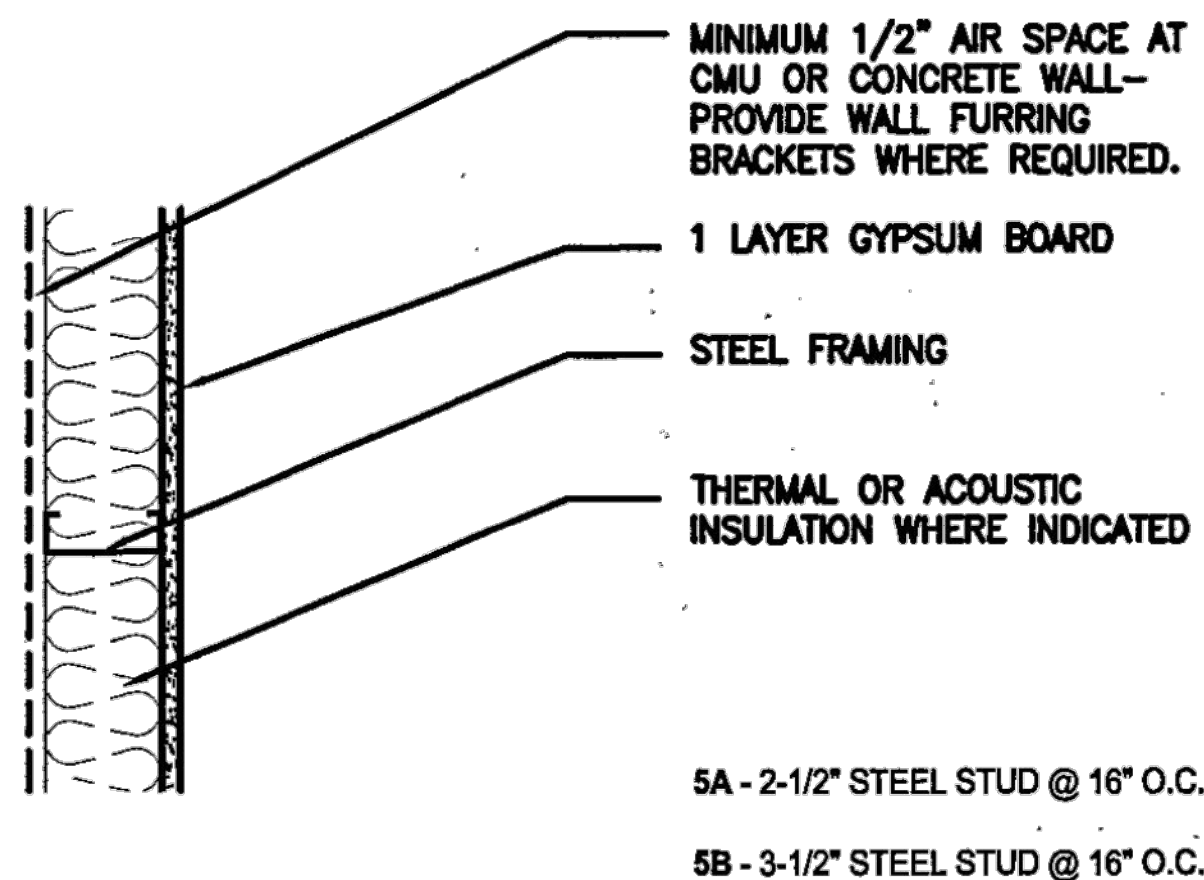
NOTE:  
THIS TABLE IS PROVIDED TO GIVE GUIDANCE FOR ALTERNATIVES: FOR OTHER STATES VERIFY  
WITH AUTHORITY HAVING JURISDICTION

## 1 WALL FRAMING SCHEDULE



## NONBEARING STEEL STUD PARTITION

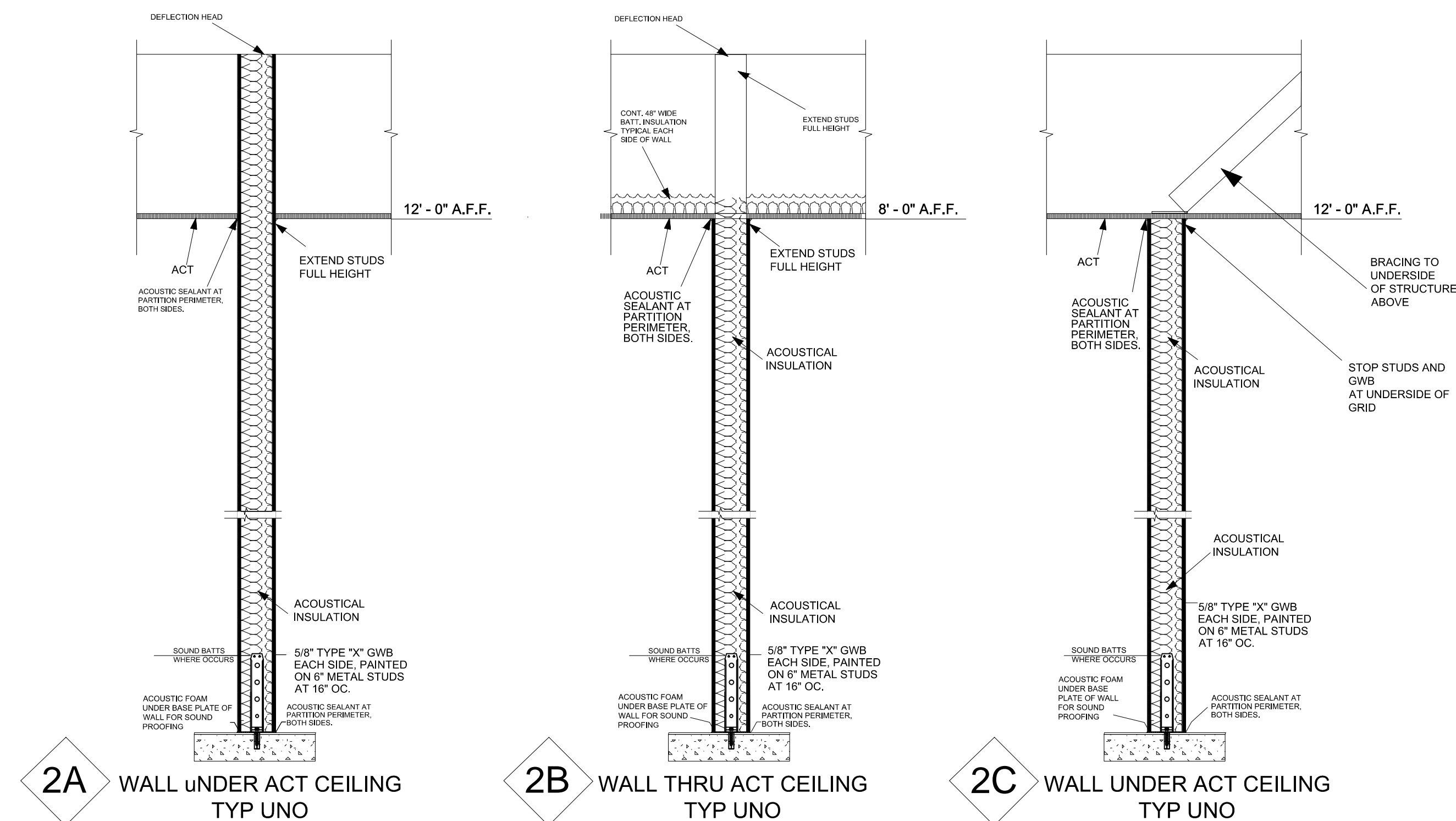
### HORIZONTAL SECTION



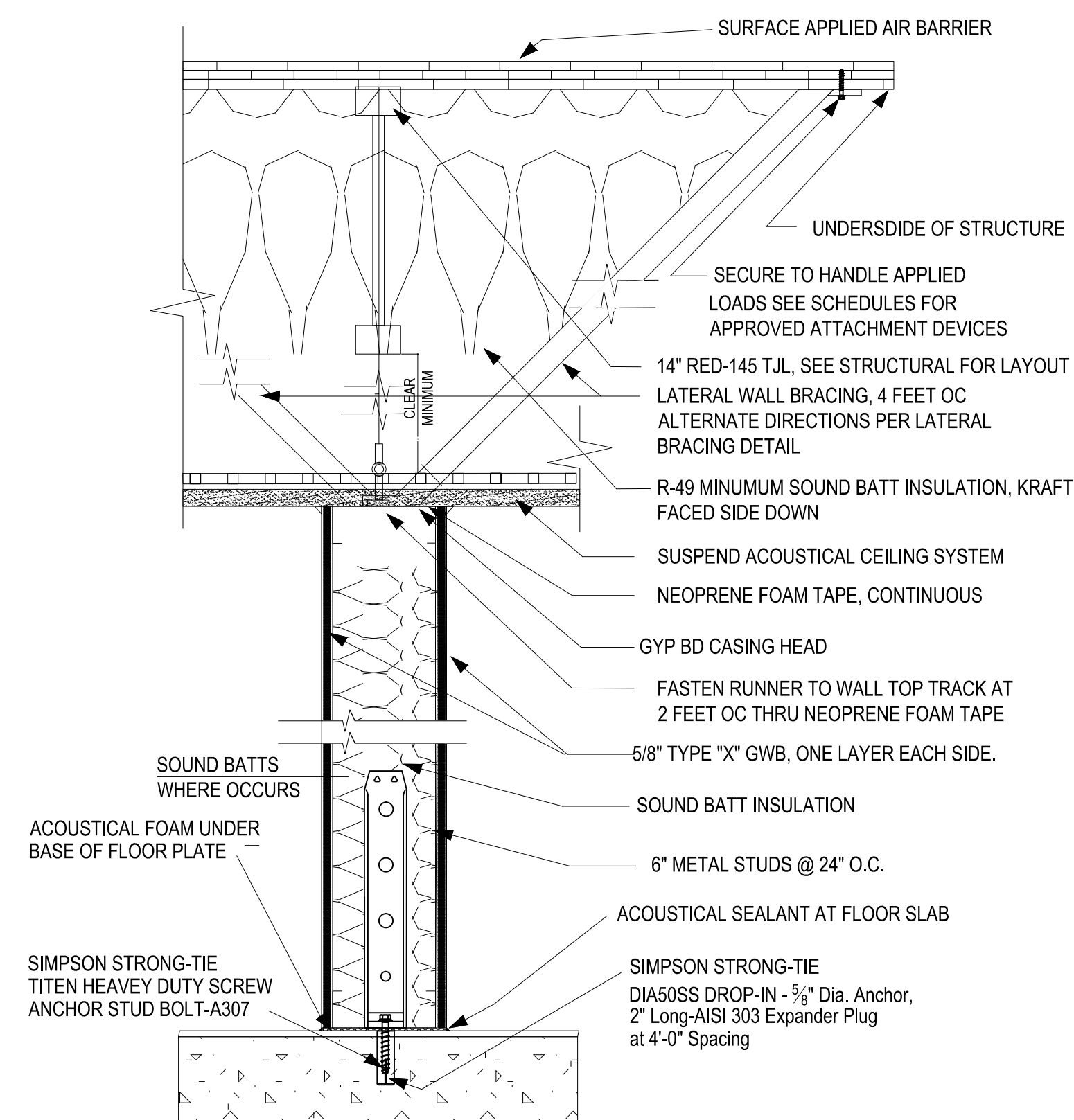
## STEEL STUD FURRING PARTITION

### HORIZONTAL SECTION

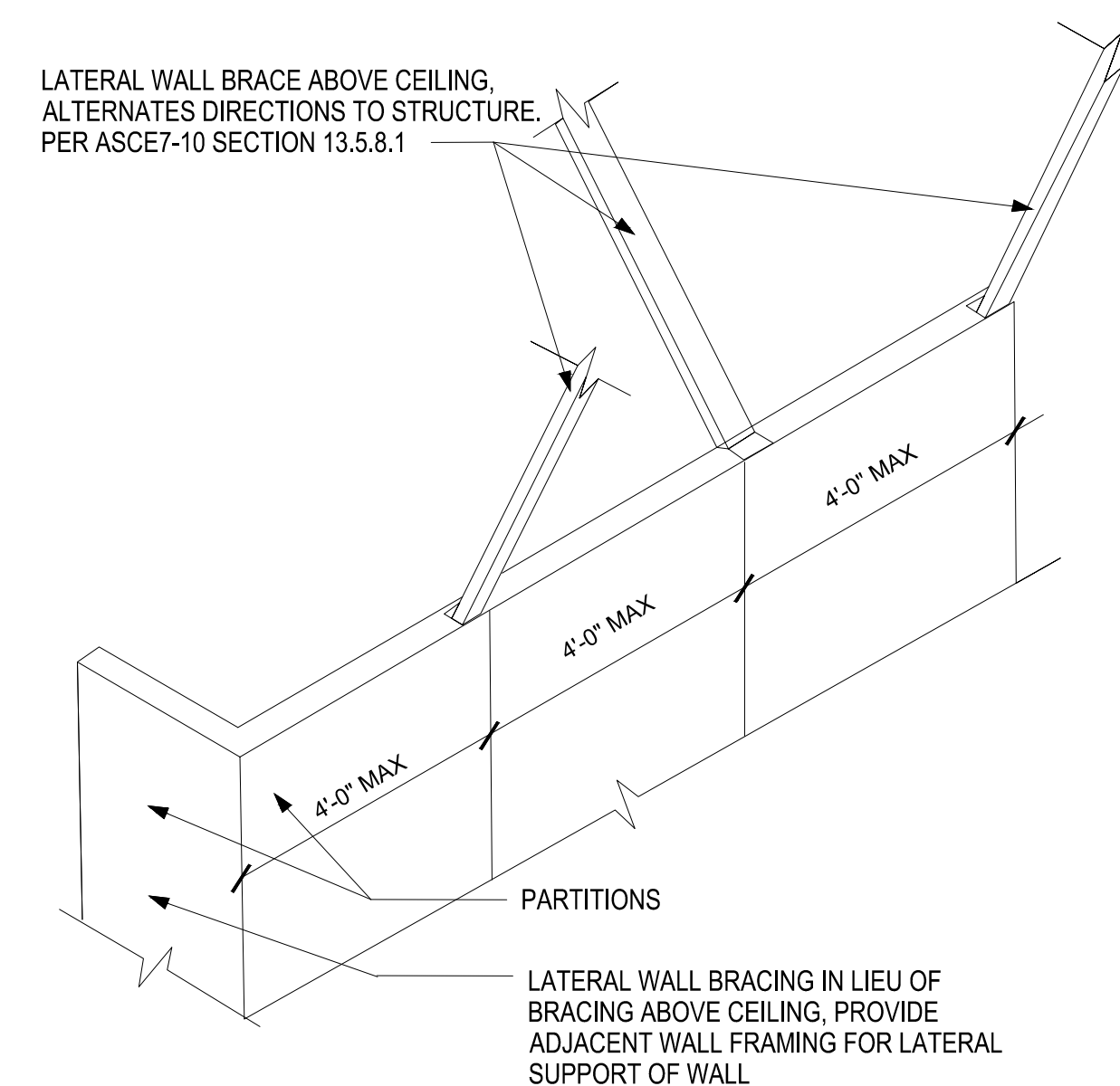
3. PENETRATING ITEMS PASSING ENTIRELY THROUGH BOTH PROTECTIVE MEMBRANES OF BEARING WALLS ARE REQUIRED TO HAVE A FIRE-RESISTIVE RATING. WALLS REQUIRING PROTECTED OPENINGS SHOULD BE PROTECTED WITH THROUGH PENETRATION FIRE STOPS PER SECTION 716 OF THE INTERNATIONAL BUILDING CODE (IBC) 2015 EDITION.
4. OPENINGS - DOORS, WINDOWS, DUCTS - IN FIRE RESISTANCE RATED WALLS SHALL BE FIRE PROTECTED IN ACCORDANCE WITH SECTION 716 OF THE INTERNATIONAL BUILDING CODE (IBC) 2015.



## 2 TYPICAL WALL CONFIGURATION DIAGRAMS



### 3 TYPICAL WALL CONFIGURATION DIAGRAMS



## 6 TYPICAL WALL CONFIGURATION DIAGRAMS

**Zebrador Productions Inc.**  
2903 NW 114 th Street  
Vancouver WA 98685  
504-490-3527

JOB# 10272021 Partition Renovation

[illegible]

12.06.21  
PM: Jeffery Grimes

## A9.0