



## Early Intervention Benefits

- Early identification and implementation of services during the most crucial time in your child's brain development.
- Family Resources Coordinator (FRC) services
- Individualized Family Service Plan (IFSP): the written plan for services to eligible children and families.
- Transition Plan prior to age 3: the plan developed for your child when leaving early intervention at age three.

## What Happens Next?

- Family chooses Early Intervention (EI) Provider.
- Referral is sent to EI Provider.
- EI Provider contacts family to schedule evaluation.
- Evaluation completed by EI Specialists.
- FRC contacts family to make an appointment for IFSP meeting.

## What To Bring To The Evaluation

- Copy of Birth Certificate
- Immunization Record
- Proof of Medical Insurance
- Previous evaluation reports (if applicable)

## Potential Funding Sources

- School Districts
- Insurance
- County Developmental Disabilities
- IDEA Part C



EDUCATIONAL  
SERVICE DISTRICT 112

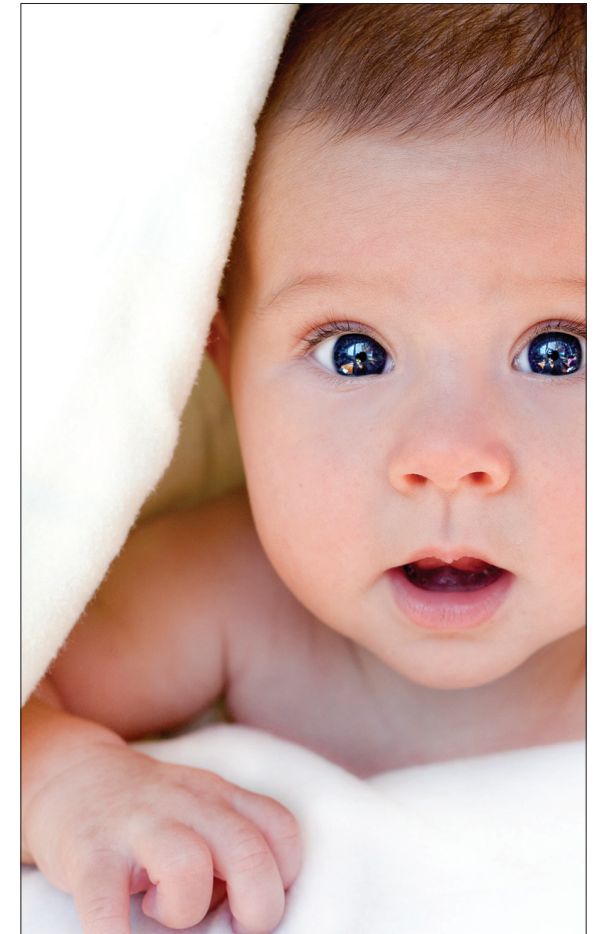
**Educational Service District 112**  
**2500 NE 65th Avenue**  
**Vancouver, WA 98661-6812**  
**Ph: 360-750-7507**  
**Email: [esit@esd112.org](mailto:esit@esd112.org)**

[www.esd112.org/specialized-services-birth-21/esit](http://www.esd112.org/specialized-services-birth-21/esit)

ESD 112 is an equal opportunity employer and provider of employment and training services. Auxiliary aids and services are available upon request to persons with disabilities.

# BIRTH - 3

## EARLY INTERVENTION IN CLARK COUNTY



 Washington State Department of  
**Early Learning**

Early Support  
for Infants  
and Toddlers 

# CLARK COUNTY EARLY INTERVENTION PROVIDERS

Early Support for Infants and Toddlers (ESIT) is an information and referral program that assists families in accessing Birth to Three services for young children with possible developmental delays. ESIT acts as a point of entry for families, as well as coordinating activities, services, and developmental screenings with other community service providers.

ESIT Clark County Local Lead Agency offers free screenings for all children 0-3 years old and an informational meeting for parents with a Family Resources Coordinator. Families learn about Early Intervention services and then choose between two providers in Clark County: Educational Services District 112, or Innovative Services NW.



## Educational Service District 112

ESD 112 Early Intervention Program has been serving children and families for over 25 years. Our Early Intervention Specialists work with families to evaluate and create a plan to support their child's development.

- » Partnerships between the family and intervention staff are valued.
- » Intervention may include: Speech, Occupational and Physical Therapists, Physical Therapist Assistants, Certified Occupational Therapy Assistants, Early Intervention Educators, and Early Intervention Specialists
- » Services occur where the child lives, learns and plays to involve the parents as primary caregivers and embrace the entire family.
- » Familiar environments provide more opportunities for practice and generalization of skills.
- » Family involvement is a core value of our program as we believe you are a vital part of your child's educational team.
- » Program is individualized for each child and family.
- » Provides year round services to children in all Clark County School Districts.

**2500 NE 65th Avenue  
Vancouver, WA 98661  
(360) 952-3531**

[www.esd112.org/specialized-services-birth-21/esit](http://www.esd112.org/specialized-services-birth-21/esit)



## Innovative Services NW

Innovative Services NW Pediatric Therapy has a 30 year proven track record of delivering quality Early Intervention Services to infants and toddlers in Clark County in a full service facility which also provides access to on-site childcare, a family resource center and other related services.

- » Multi-disciplinary evaluation teams including Physical, Occupational and Speech Therapists as well as Masters-level Early Education Specialists
- » Evaluations in home and/or clinic
- » Direct services delivered by licensed, Masters-level professionals in the natural environment of the child
- » Services provided on a year round schedule
- » Parent Education through one-on-one treatment
- » Specialty Services including orthotics and equipment fitting, sensory integration, feeding, therapeutic listening, aquatics and incontinence programs
- » Access to on-going Private Therapy in out-patient clinic through age 18
- » Services to children in all Clark County school districts

**9414 NE Fourth Plain Road  
Vancouver, WA 98662  
(360) 892-5142**

[www.innovativeservicesnw.org/early-intervention.php](http://www.innovativeservicesnw.org/early-intervention.php)